



THE LANDMARK

WINTER 2010



*LandTrust Purchases the Landmark Capel Property
Located at the Mouth of the Uwharrie River*

Inside this issue:

- Letter from the President
- Land Protection Report
- Recent Outings and Events
- Planned Giving
- Thanks to our Donors
- Upcoming Hikes and Events
- Kannapolis Properties
- Stewardship Update

LETTER FROM THE PRESIDENT

As The LandTrust for Central North Carolina opens a new decade in this region, I thought it would be beneficial to review where we have been as an organization since our founding in 1995. Our mission is to work thoughtfully and selectively with property owners to preserve our lands, our vistas and the essential nature of our region. In other words, we want to identify important properties in our ten county region that should be protected and preserved, and proactively engage land owners to do the same. As a result, we have protected almost 20,000 acres in this region in 14 years. This represents over 130 different projects in our ten county region.

Much of our effort has been in the Uwharries where our goal is to fulfill the vision of creating North Carolina's Central Park. In the Uwharries we have purchased land that will someday expand the Uwharrie National Forest. Adjacent to the Uwharries, landowners have placed conservation easements on over 500 acres of land to protect the land from unnecessary development.

Outside of the Uwharries, we have placed conservation easements on approximately 12,000 acres, representing about 80 projects. Most of this is for farm land preservation and to prevent urban sprawl in our region. In general, we do not purchase land outside the Uwharries unless it is for a specific purchase, such as a future park.

How many acres can we protect in the coming decade? Our Board is just beginning a strategic planning process that is going to identify our goals for the next few years, but most importantly, our aspirations for the future. In order for our planning process to be successful, we need to hear from you, our land



Dyke Messinger

owners, donors and friends. What do you think we should set as our goals for this decade? Are there areas in this region that we should put more emphasis? How many acres should we look to protect this decade? Do most land owners know about us? What can we do to spread the word about the values of conservation in this region?

In the next newsletter, I will give you a report on the results of our strategic plan and the direction the Board has set for the future. Thank you for being a part of something special in this region of North Carolina. More than most organizations I know, we have the opportunity to influence the quality of life for generations to come. Please continue to support our mission.



Critical Uwharrie Tract Acquired for Future Public Recreation



A critical Uwharrie conservation tract in Montgomery County has been protected by The LandTrust. The LandTrust recently purchased 245 acres of a larger 308 acre tract which has long been considered one of the most important unprotected large parcels in the Uwharrie National Forest and Morrow Mountain State Park area. With the closing, we also received a three year option to purchase the remaining 63 acres, which fronts on Lake Tillery directly across from Morrow Mountain State Park. The LandTrust is

working with the national conservation group "Trust for Public Land" (TPL) to get the property into public ownership and management.

The tract, formerly owned by the Capel Rug Company in Troy, is located at the convergence of the Uwharrie River and Dutchman's Creek, adjacent to the confluence of the Uwharrie River and Lake Tillery. It is at this point where the "Yadkin River" becomes the "Pee Dee River." The recently purchased parcel is located directly across from the boat launch in Morrow Mountain State Park, and is prominently visible from many hiking trails within the park. The land to be protected features unique natural rock formations, a rare and scenic piedmont waterfall, scenic vistas of the Uwharrie Mountains and Morrow Mountain State Park, and access to both Lake Tillery and the Uwharrie River. There are also significant archaeological resources on this property which will be studied and protected.



Arron Capel presents Jason Walser with Native American projectile points from property.

Continued on Page 4...

Uwharrie Tract Continued...

“We are extremely proud and excited to announce the conservation of this tract, long considered one of the most important land conservation opportunities in the region,” says Jason Walser, executive director. “Our long-term goal is to see this property opened to the public as an expansion of Morrow Mountain State Park or perhaps an expansion of the Uwharrie National Forest. For many years, we have

been working to make the Uwharrie National Forest and the Uwharrie River more accessible to the public, and this parcel is critical in terms of enhancing paddling and fishing opportunities on the Uwharrie River. It also represents the only opportunity to tie the 25 mile Uwharrie Trail into Lake Tillery, as well as Falls and Badin Reservoirs. Furthermore, this property is the key to connecting the National Forest to the State Park, which is critical

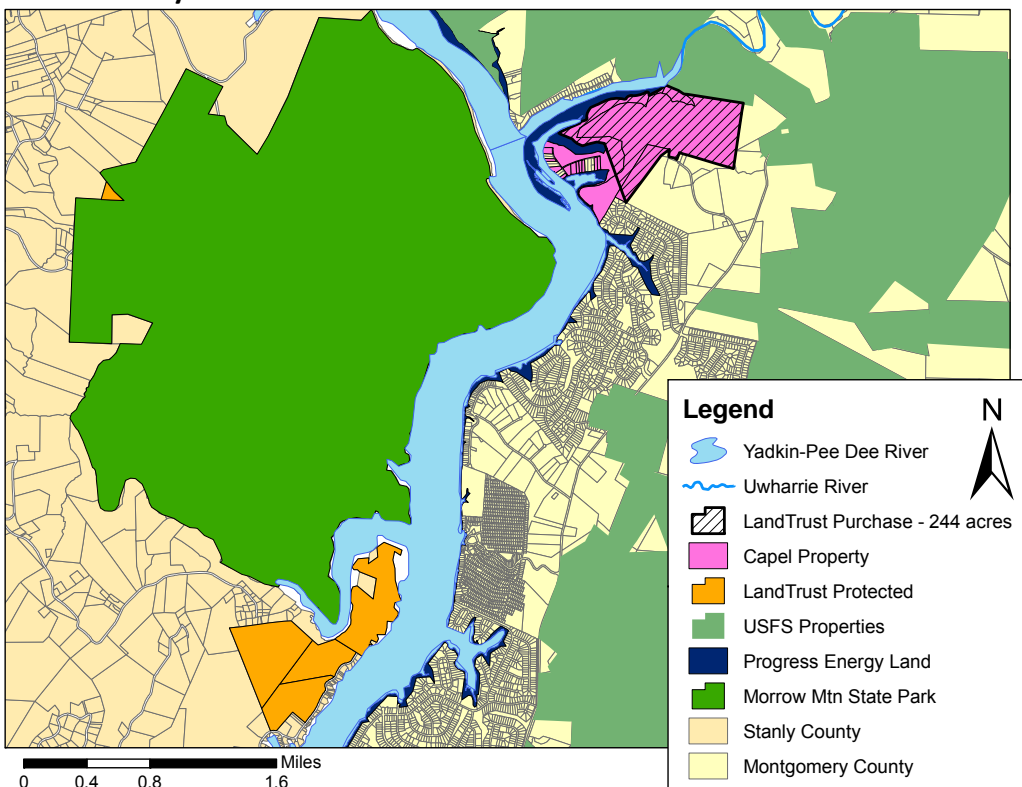


Capel Property, where Uwharrie River meets the Yadkin-Pee Dee.

to the long term goal of promoting this region as North Carolina’s Central Park. The public recreational opportunities for this parcel truly cannot be overstated.”

Walser says the tract was acquired with major assistance from Fred and Alice Stanback. Fundraising for the second phase of the property is just beginning, and donations from the public are encouraged.

Newly Protected Uwharrie Conservation Tract



Gwen & Bill Webb Property Protected in Rowan County

The LandTrust is proud to announce the protection of the Webb Farm in western Rowan County. This 131 acre property sits alongside Third Creek, and houses significant wildlife habitat and historic buildings. The owners of the property, Dr. William and Gwen Webb of Salisbury, donated an easement on the farm preventing all additional residential development.

The Webb family worked with U.S. Fish and Wildlife Service and NC Wildlife Resources Commission to create a model



Bottomland hardwood swamp forest.



One of several historic restored buildings.

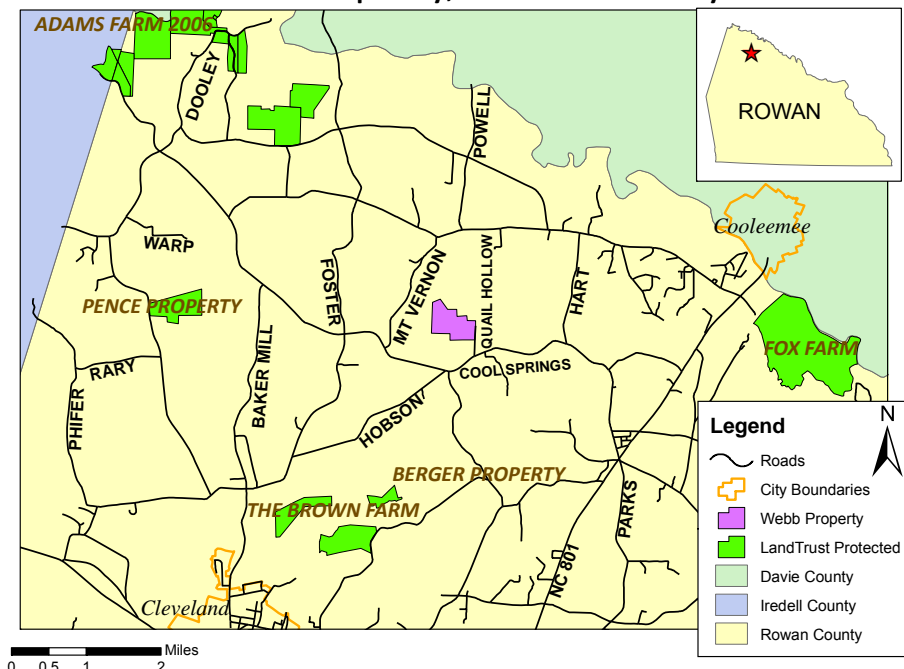
continues to be respected and enjoyed for future generations to come.”

Executive Director Jason Walser observed that every aspect of the farm has been lovingly restored or improved. From the old cabin the Webb’s restored, to the barns and outbuildings, to the floodplain impoundment, they have worked diligently to make the farm a showplace. They also share the farm with children from Rowan County hosting wildlife hikes and school outings to introduce them to the wonderment of nature and farming. The citizens and wildlife of Rowan County will indeed benefit from the conservation of this meticulously cared for farm for a long time to come.

wildlife habitat property. With a mix of cropland, wetlands, creek frontage, hardwood forests, and a large pond, the site is a destination for a diversity of wildlife. Dr. Webb notes

“We have put a lot of time and effort creating something we are very proud of. It is a place where our whole family loves to spend time together in the country. We wanted to make sure that the farm

Webb Property, Rowan County



Greer Property Preserved in Randolph County

Becky Greer not only has an interest in conserving wildlife habitat and water quality, but has also been an active pioneer for historical preservation in North Carolina. Once an avid member of the Historic Salisbury Foundation, she is now making plans to move back to her hometown of Farmer in Randolph County, where she has founded the Farmer Historic Preservation Society. This 27-acre conservation easement borders a 2-acre parcel she donated to the Society, on which she plans to move and restore a historic pre-Civil War house. She and her



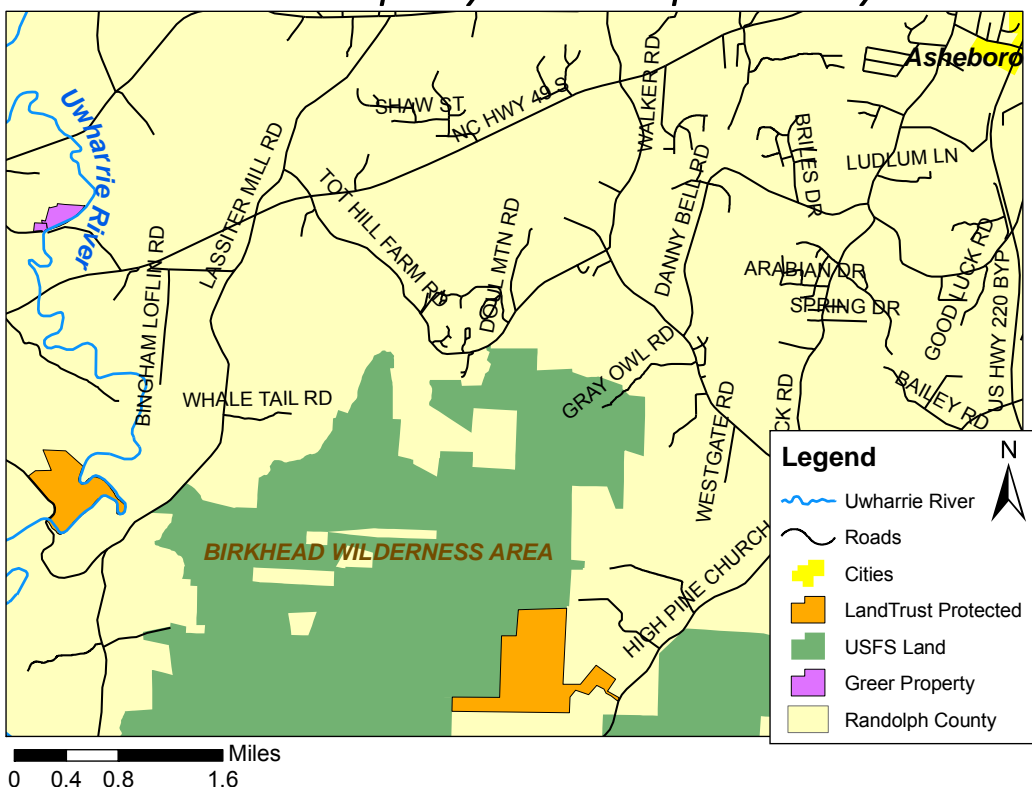
Eastern Box Turtle (Terrapene carolina) has made a home on the protected property.



Uwharrie River as seen from Greer Property.

husband then plan to keep the house open to educate visitors about historic preservation. Additionally, this easement is near other LandTrust preserved properties and the Birkhead Wilderness Area, a part of the Uwharrie National Forest. The tract also has natural heritage significance, as this stretch of the Uwharrie River is Nationally Significant Aquatic Habitat and at least three rare aquatic species are also found in it. Thanks to Becky and her husband for their heart for natural and historical preservation!

Greer Property - Randolph County



Lake Fisher Property Conserved

Lake Fisher Property - Cabarrus County



Sometimes good things come from bad. When Doug Ehmann saw the residential real estate market collapsing just as he got final permitting for his new subdivision along Lake Fisher in Cabarrus County, he was more than a little worried. After all, the land that he had acquired was a slam dunk project in better times – more than 60 acres of lake front property just off the interstate in Cabarrus County with a short commute to Charlotte.

Lake Fisher, the drinking water supply for the City of Concord, is a pristine undeveloped lake. Homesites with lake views would have surely sold for a premium, and zoning was approved for more than 100 units.

But Doug put together a good team of advisors, who came up with a novel approach. Working with the Cities of Concord and Kannapolis, and The Land Trust, his company arranged for a land swap resulting in conservation of wildlife habi-



tat and water quality in Lake Fisher, less land being impacted by development, and a more promising economic model for his company. The Land Trust now has a conservation easement along Lake Fisher. There will be commercial development on approximately 15 acres adjacent to Lane

Street and the interstate far from Lake Fisher. Wooded buffers in the concentrated development provide aesthetic buffers, water quality protection, and important wildlife habitat.

The conserved property fronts Interstate 85 and Brantley Road, and is prominently visible from Lane Street in Kannapolis. More than 80,000 travelers a day will enjoy better views thanks to more than 50 acres of land slated for residential development which will now stay in hardwood forest. Many thanks to the City of Concord, Kannapolis, and DPE Developments who worked tirelessly to pull off this unique project for the benefit of all water users in Concord.

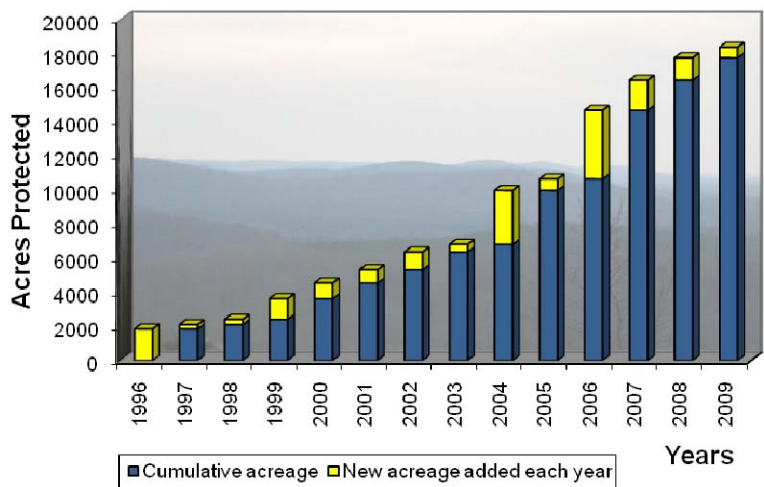
Land Protection Year in Review

In 2009, The LandTrust added 624 acres to its permanently protected properties total. That brings the overall acres protected in the 15 year history of The LandTrust up to 18,380 acres. Although this year brought economic declines not seen in generations, many benefactors and landowners still found a way to step up to the plate and keep our positive momentum moving forward at a brisk pace. Of course, since our time frame for measuring success is longer than most organizations, economic cycles are just part of the boarder "landscape" of challenges in which we operate.

We continue to work diligently on several strategic initiatives, to take advantage of the

"once-in-a-lifetime" conservation opportunities for thoughtful conservation as they arise. More than ever, we are counting on you to help us conserve the best natural and cultural treasures for those who follow us, and to take advantage of making more of these conservation opportunities realities in 2010 and the new decade that is to come.

Land Protection Totals



King Mountain Federal Earmark!

The LandTrust has fantastic news to announce! For the first time in over 6 years, Federal "Land and Water Conservation Fund" dollars are coming to the Uwharries! Thanks to an earmark sponsored by Congressman Howard Coble, The Uwharrie National Forest will be getting a new addition to the Uwharrie Trail, the King Mountain Property. Although this funding is only for half of the property, about 180 acres, it will provide the linkage to fill one of only three critical gaps left, as well as connect three fragmented US Forest Service parcels.

The Land and Water Conservation Fund derives its proceeds from offshore oil drilling leases in federal waters, but the Southeastern United States has not received significant funding from this pool of federal conservation dollars over the past decade. We are hopeful that our success with the Uwharrie Trail in 2010



Boy Scout Marker just north of property on Historic Uwharrie Trail, found by LandTrust staff.

bodes well for future help in "filling the gaps" of the Uwharrie Trail.

A big thanks to all who assisted with this project, particularly our partners in the Greater Uwharrie Conservation Partnership, the Eastern Forest Partnership, Congressman Coble, Congressman Price, and other NC Legislators who worked in a bipartisan manner to help do something good for all of our state's citizens.

“Pain-free giving that lasts forever”

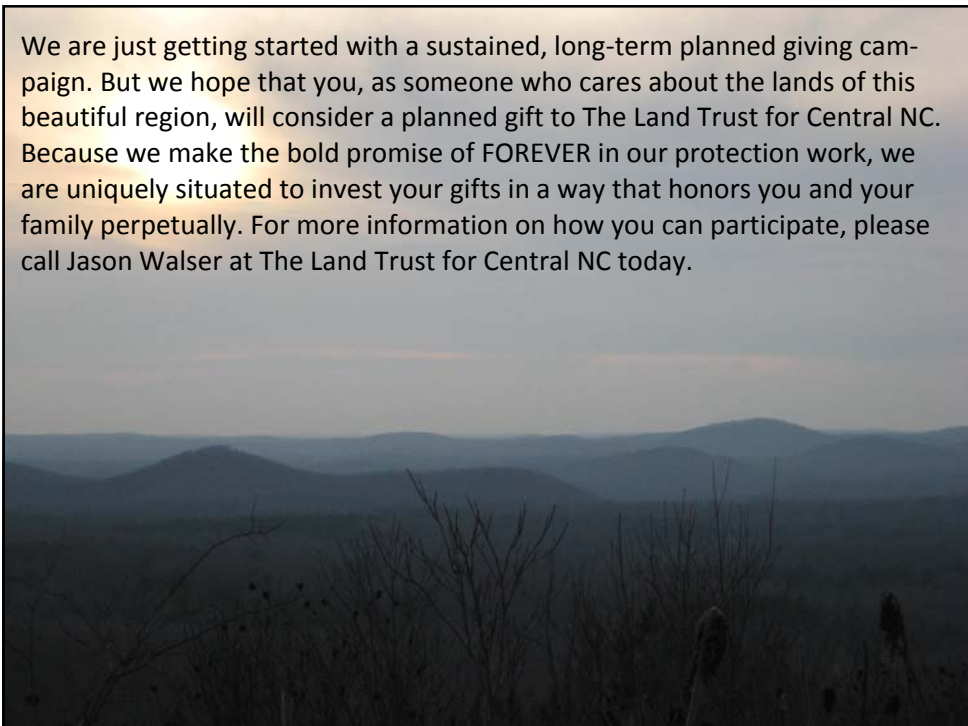
I hear regularly from supporters who say “I just wish we could do more for The LandTrust.” Well, don’t think for a minute that we are not grateful for every penny and volunteer hour already given to this organization over the past 15 years by literally thousands of you.

However, there is a very easy way that everyone can make a pain-free gift to this organization that most people do not even think about. I am referring to the opportunity for YOU to make a planned gift to this organization that can live on forever in your honor.

Before you tune out thinking that planned gifts are just for the super-rich who have estate tax problems, please consider the following points.

- If every person who gets this newsletter put in their Last Will and Testament that they would like to give **\$1000** to The Land Trust for Central North Carolina out of their estate, The Land Trust could establish a **\$1 million** revolving land protection fund, a **\$1 million** stewardship and education fund, **AND** a **\$1 million** farmland protection fund. With \$5000 planned gifts from each of you, we could create a literal war-chest of land acquisition funds to buy strategic parcels as they came available.
- Gifts can be given through your estate to support only activities you want to be involved with, such as outreach and education, farmland protection, creating public parks, preserving historically significant sites, etc. We already have some dedicated funds like these set up that can only be used for specific types of projects and never for operations.
- We will accept gifts of conservation land, stocks, or even houses and cars provided that we can use such assets to save other important conservation land.
- If you own land that you plan to leave to your church or college, please remember that they do not and CAN NOT promise to protect the land as farm or forest land perpetually. The trustees of such organizations have a fiduciary obligation to fulfill the missions of their organizations, meaning that maximizing proceeds from such land in a public sale is usually the outcome of such gifts.
- Gifts of \$1000, \$10,000, or even \$100,000 made by just a handful of people could exponentially increase the impact and sustainability of this organization in a relatively short period.

We are just getting started with a sustained, long-term planned giving campaign. But we hope that you, as someone who cares about the lands of this beautiful region, will consider a planned gift to The Land Trust for Central NC. Because we make the bold promise of FOREVER in our protection work, we are uniquely situated to invest your gifts in a way that honors you and your family perpetually. For more information on how you can participate, please call Jason Walser at The Land Trust for Central NC today.



Recent Outings and Events

Falls Lake Canoe Trip

On Sunday, September 13th, approximately 45 people joined The LandTrust for Central North Carolina for a canoe trip on Falls Lake. One of the smallest lakes in the Yadkin River chain, Falls Lake is a paddlers' paradise with undeveloped lake frontage and little boat traffic. Canoes



and support were provided by Boy Scout Troop 442, sponsored by First United Methodist Church in Salisbury. Paddlers observed a wide variety of wildlife including osprey, blue heron, kingfisher, cranes and a brown snake, captured by Mark Lewis of the NC Zoo, for the assembled crowd to view up close. Paddlers got to see a part of the approximately 1,000 acres on the Stanly County side of the lake that the LandTrust is hoping to see added to Morrow Mountain State Park as part of the Alcoa Relicensing Process.

Nature Walk at Eagle Point Park

The LandTrust hosted approximately 60 children and their families on a nature walk at Eagle Point Park and Preserve in Rowan County on Sunday, Oct. 18th. Staff from Rowan Wildlife Adventures at Dan Nicholas Park provided programming for the event, including a live opossum and screech owl as well as an assortment of live turtles and snakes. Eagle Point Park and Preserve is a part of the Rowan County Parks & Recreation park system. This 100-acre tract runs adjacent to High Rock Lake for over one mile. The LandTrust for Central NC was instrumental in creating this park, purchasing it from a private landowner with privately raised funds then donating the land to Rowan County in 2000 for permanent use as a passive recreational park. The tract is 100% forested, has informational signs, over five miles of marked trails, and a canoe put-in point. A special thanks to our good friend Bob Pendergrass of Rowan

Wildlife Adventures at Dan Nicholas Park for providing support and programming for this event.



Tree Trimming at Centennial Park & Ornament Workshop at The Green Goat Gallery

The LandTrust held an ornament workshop on December 6 at the Green Goat Gallery in Spencer. Children made environmentally-friendly ornaments for squirrels and birds using bagels, popcorn, raisins, oatmeal, cranberries, birdseed, and Indian corn. Gallery owner Anne Waters baked gingerbread men for the children as a special treat. Children decorated their cookies with candies and icings.



The LandTrust's seventh annual Tree Trimming Ceremony was held at Centennial Park in the Fulton Heights Neighborhood on December 7. Families gathered to hang homemade, edible ornaments for wildlife. There was even an appearance by Santa and Mrs. Claus! The Ornament Workshop and Tree Trimming continue to be popular events for LandTrust supporters as they celebrate the holiday season.

Homeschoolers Canoe Trip on Lake Tillery

On September 30th approximately 20 high school students from the Rowan County Home School Association and 10 parents joined LandTrust staff for a canoe trip on Lake Tillery. The trip was co-hosted by staff from Morrow Mountain State Park, which donated canoes and equipment for the outing. Participants received a lesson in basic canoe skills from Morrow Mt. Ranger Ron Anundson,

heard a presentation on the benefits of land conservation from LandTrust operations director Andrew Waters, got to view the newly acquired Capel Property from the Uwharrie River, and enjoyed an absolutely spectacular day on the water. We would like to say a special thanks to the Woodson, Proctor and Wood Foundations for sponsoring educational outreach events such as this outing.



Land Management Tour on Bittinger Property

Over 40 people came out on a sunny, crisp November day for a Land Management Tour on The LandTrust's Bittinger Property. John Isenhour, Technical Assistance Biologist for the Wildlife Resources Commission, led a guided tour of the property, stopping along the way to point out various management practices implemented for wildlife benefit, some of which were funded by Farm Bill cost-



share programs. Attendees saw native grasses and shrubs growing in crop borders, and learned about the importance of these transition areas for species such as turkey and quail. John also pointed out that the bottom along the river is being cultivated for three years, after which time it will be restored to native warm season grasses, as well. The farming practices are a cost-effective way to get rid of the invasive species, such as privet and tree-of-heaven, that have been a problem on the field edges for years. For more information about how you can get assistance with land management costs, you can contact your local Natural Resources Conservation Service (NRCS) office.

New Year's Day Hike in the Birkheads

Nearly 60 people came out for a fantastic, brisk hike on New Year's Day! A joint event with Piedmont Land Conservancy, this hike featured The LandTrust for Central NC's protected 290 acre property immediately adjacent to the Birkhead Wilderness Area. This property was slated for development when The LandTrust was offered a last minute chance to buy it, and did so with the help of private donors and funding from the Clean Water Management Trust Fund (CWMTF). The roadway that was once to be a residential road, now has native grasses and the beginnings of tree seedlings peeking



out. It was a great turnout, and a great way to start off a New Year! The LandTrust hopes to make this a tradition, and we hope to see you there next year!

RiverDance 2009 Recap!

Approximately 350 people danced the night away at the Historic Salisbury Station on August 15th during RiverDance 2009, the annual fundraiser supporting The LandTrust for Central North Carolina. Attendees enjoyed a rousing set of dance music by The Risse Band, returning for a command performance from last year's event, and food catered by Chef Mary Berrier's Buttercup Café in Denton.

With the inclusion of a match from a LandTrust supporter, the event raised nearly \$40,000 for land conservation in the organization's ten county region, including over 6,000 acres conserved in Rowan County. "In this era of diminished expectations and tight pocketbooks, we are delighted to report attendance at RiverDance 2009, our ninth annual, was one of our best ever," reports Jason Walser, executive director. "We were particularly excited about the high number of people aged thirty and younger who attended. Their support of conservation is a positive sign for our area's future."



Nichole Towns, Corinne Eknoyan, Jolene Philpott, & Jennifer Hudson enjoy the evening!

Development Director Barbara Lawther credits the success of the event to the hard work of the outstanding committee, chaired by Jessica and Nick Goodman. "Jessica and Nick energized the committee, which made the event special," says Lawther. The party reflected their enthusiasm, resourcefulness and dedication. Lawther also noted the work of Meredith Reamer Sullivan, longtime LandTrust volunteer event coordinator.



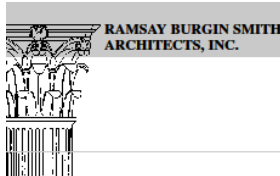
Robin and Steve Fisher, F&M Sponsors

The LandTrust would like to thank the following sponsors for their support:

Table Sponsors – Elizabeth and Michael Bauk, Community One Bank, Sara & Bob Cook, F&M Bank, The Fisher Companies, Global Contact Services, Nicholas Goodman/F.E. Goodman Construction, KMD Construction, Deborah & Dyke Messinger, Bruce Ruffy, Susan & Hayes Smith, Wallace Realty Company, Walser Technology Group, and Woodson Sayers Lawther Short Parrott & Abramson, Attorneys.

General Sponsors – Ramsay Burgin Smith, Architects, Robinson Associates, Statewide Title, and Sullivan Builders.

In-Kind Donations – Cheerwine Bottling Company, Godley's Garden Supply, and Silver Eagle Distributors



Woodson Sayers Lawther Short Parrott Walker & Abramson Attorneys



Thanks To Our Supporters!

Your donations will allow us to continue "Saving the Places You Love" in the Piedmont Region. The following are **new** or renewing members from **January 1, 2009** through **January 1, 2010**. Every effort has been made to ensure that these names are correct. Should there be an error, or if you have questions or comments, please contact us at (704) 647-0302. Thanks for supporting The LandTrust!

Heartland 100 (Golden Oak) \$5,000 and up

Dr. and Mrs. Charles F. Floyd
Ms. Amy Grissom
The Estate of Lucille Proctor
Norvell
Mr. and Mrs. Fred Stanback
Mr. and Mrs. William C. Stanback

Heartland 100 (Maple) \$2,500 - \$4,999

Mr. and Mrs. Edward Henry
Clement
Mr. Peter Wilson Hairston
The Mary Shaw Love May Family
Mr. and Mrs. Edward Proctor
Norvell
G. W. Smith Lumber Company
Mr. Redneck
Mary and Elliott Wood Foundation

Heartland 100 (Dogwood) \$1,000 - \$2,499

Mr. and Mrs. Michael Stephen Bauk
Mr. and Mrs. John A. Bishop
Community One Bank
Mr. and Mrs. Robert L. Cook Jr.
Mr. and Mrs. Darryl Keith Corriher
Mr. and Mrs. Addison Davis
Global Contact Services
F. E. Goodman Construction
Company
Ms. Ruth Ann Grissom and
Dr. Marcus Plescia
Mr. and Mrs. Robert G. Hazen
Mr. and Mrs. Gordon Pannill Hurley
Mr. and Mrs. James F. Hurley III
The Honorable Billy Joe Kepley
The Glenn E. and Addie G. Ketner
Family Foundation
KMD Construction Company
Mr. and Mrs. Dwight Ferrand
Messinger
Mrs. Vivian R. Penry
Piedmont Natural Gas Foundation
The Proctor Foundation
The Blanche and Julian Robertson
Family Foundation
Mr. Bruce Rufty
Shaver Wood Products
Mr. Bobby C. Sheets
Mr. and Mrs. Ernest Hayes Smith
Mr. and Mrs. Tom E. Smith
Mr. Brad Stanback and Ms. Shelli
Lodge-Stanback
Taylor Clay Products
Uwharrie Mountain Run
Uwharrie Wheelmen
Wallace Realty Company
Walser Technology Group

Ms. Sue Carter Walser
Mr. John Walter
Mr. James G. F. Whitton
Mr. and Mrs. Dan R. Williams
Woodson Sayers Lawther Short
Parrott Walker & Abramson

\$500 - \$999 (Benefactor)

Mr. and Mrs. Gregory M. Alcorn
Ms. Frances Cannon
Ms. Mary C. Criddlebaugh
Mr. and Mrs. N. J. Errante
First1 Bank
Mr. and Mrs. Sanders E. Goodman
Mr. and Mrs. William Marc Graham
Dr. and Mrs. Walter B. Holland
Mr. and Mrs. Richard Long Huffman
Dr. and Mrs. Louis C. Kandl
Mr. and Mrs. James R. Mauney
Mr. and Mrs. John Harris
Morrison Jr.
Randolph Rifle Club
Dr. and Mrs. James M. Rhyne
Mr. and Mrs. Richard W. Shaver
Mr. and Mrs. David F. Simmons
Dr. Mark T. Stanback and
Ms. Nancy Popkin
Mrs. Edward Tennent Taylor
Colonel and Mrs. Ray-Kent
Troutman
Mr. and Mrs. Kenneth Vaughn

\$250 - \$499 (Patron)

Mr. and Mrs. Andrew James
Abramson
Mr. and Mrs. Stephen M. Antosek
Mr. and Mrs. Charles Bernheim
Dr. and Mrs. Norman Hurst Bertels
Dr. and Mrs. Robert Bertram
Mr. Charles W. Broadwell
Honorable Lorene Coates
Mr. and Mrs. Raymond D. Coltrain
Mr. and Mrs. William S. Cox
Davidson Surveying and Mapping PC
Mr. Nereus C. English III
Mr. and Mrs. Luke C. Fisher
Mr. and Mrs. Martin Boger Foil Jr.
Dr. and Mrs. Donald R. Fortner, Jr.
Mr. and Mrs. Chalmers L. Glenn
Mr. and Mrs. Cress E. Goodnight III
Mr. and Mrs. James Beall Graham
Ms. Rachel A. Hamilton
Iredell County Farm Bureau
Mr. and Mrs. Phillip J. Juneau
Mr. and Mrs. Herbert L. Lawton
Mr. Carroll H. Leggett
Literary Bookpost
Dr. Deborah M. Lucas and
Mr. Richard Lewis
Mrs. John Harris Morrison

Mr. and Mrs. Kenneth Dale Nelson
Ms. Margaret J. Newbold
Dr. W. Gaston Penry, Jr.
Mr. and Mrs. Mark Braswell Perry
Mr. and Mrs. William Pitt
Mrs. Robert E. Pruehsner
Mr. James F. Randolph
Mrs. Richard James Rendleman
Mr. and Mrs. John Riley
Mr. and Mrs. Charles Clifford Ritchie
Mr. and Mrs. Thomas Clinton Robins
Robinson Associates, Appraisals
Mr. and Mrs. Tom E. Smith
Mr. and Mrs. James D. Smith
Statewide Title Inc.
Ms. Elaine Steele
The Timberlake Foundation
Mr. and Mrs. Edward William
Wagoner
Ms. Louise R. Walser
Dr. and Mrs. Jon Welch
Mr. and Mrs. J. Jay Whittington
Ms. Shelley Williamson
Mr. and Mrs. Norde D. Wilson
Mr. and Mrs. Paul Bernhardt
Woodson Jr.

\$100 - \$249 (Sustaining)

Mr. and Mrs. Henry Alexander
Mr. Thomas A. Allison
Mr. and Mrs. Robert Reece Bailey
Dr. Hilda Hart Bailey
Mr. and Mrs. Robert L. Baker Jr.
Mr. and Mrs. Oscar Brooks
Barnhardt
Mr. J. C. Barnhardt Jr.
Mr. and Mrs. John Bates
Mr. and Mrs. Clarence B. Beaver Jr.
Mr. and Mrs. James C. Benton, Jr.
Mr. and Mrs. Edward Birkinshaw
Dr. and Mrs. J. Michael Bitzer
Dr. and Mrs. Wilbert W. Blackman
Mr. and Mrs. Joseph C. Blackwell
Mr. and Mrs. Steve Blount
Mr. and Mrs. Rex Boner
Mr. and Mrs. John Thomas Bost
Mr. and Mrs. Brad Brady
Mr. Burl Brady
Mr. and Mrs. Paul A. Brown
Mr. and Mrs. Harold W. Buchanan
Dr. and Mrs. John H. Bumgarner
Dr. and Mrs. David Scott Burton
Mr. Davis J. Cable
Mr. and Mrs. Summersett Carter
Dr. and Mrs. John S. Cave
Dr. and Mrs. Thomas Kern
Carlton, Jr.
Mr. and Mrs. Nathan Chambers
Mr. and Mrs. G. Boon Chesson
Mr. and Mrs. Tripp Clement

Mr. Charles R. Coble
Mr. and Mrs. Raymond Durwood Coltrain
Dr. and Mrs. Steven Colwell
Mr. and Mrs. English Cook
Mr. Guy Cornman III
Mr. and Mrs. Carl Coulthard
Mr. and Mrs. David B. Craft
Mr. and Mrs. Reginald B. Dailey
Mr. and Mrs. John W. Dees II
Mr. James M. Dillon
Mr. and Mrs. Stephen J. Drinkard
Mr. and Mrs. Lindsey Dunevant
Mr. and Mrs. J. Michael Dunham
Mr. and Mrs. Stan Dunham
Mr. and Mrs. Richard Gregory Dunn, Jr.
Mr. and Mrs. Steve Eagle
Mr. and Mrs. R. Dean Featherston
Mr. and Mrs. Paul E. Fisher
The Honorable and Mrs. Larry Grant Ford
Dr. Samuel L. Fort
Mr. and Mrs. Tyler Frick
Mr. and Mrs. J. Michael Fuller
Dr. and Mrs. Robert H. Gaither
Mr. and Mrs. Tomme T. Gamewell
Ms. Martha Lou Gascoigne
Mr. and Mrs. George D. Glover
Dr. and Mrs. Myron Arthur Goodman
Mr. and Mrs. Nicholas Ward Goodman
Mr. and Mrs. Richard Park Goodman
Mr. and Mrs. Sanders Emerson Goodman
Mr. and Mrs. Cress Edward Goodnight, Jr.
Mr. and Mrs. William Goodnight
Dr. and Mrs. Joel S. Goodwin
Mr. and Mrs. Charles Graeber II
Mr. and Mrs. Wilson Graham
Dr. and Mrs. Gordon A. Grant III
Dr. and Mrs. Rhett E. Greene
Mr. and Mrs. B. Alex Grenoble
Ms. Margaret F. Grigg
Dr. and Mrs. James R. Hardin
Mr. and Mrs. Charles H. Harris Jr.
Mr. Clyde H. Harriss, Jr.
Mr. and Mrs. Jerry R. Harviel
Mr. and Mrs. M. Thomas Hatley Jr.
Mr. and Mrs. Paul R. Hinkle
Mr. and Mrs. Steven L. Hinson
Mr. and Mrs. John E. Hlavacek
Rev. and Mrs. Whayne Hoagland
Mr. William Hollan
Ms. Nancy Hunter Holland
Mr. and Mrs. Jason C. Holt
Mr. John Holton
Mr. David W. Hoyle III
Mr. and Mrs. Joel S. Hubbard
Mr. Glenn E. Hudson and Dr. Jennifer Hudson
Mr. and Mrs. Brian D. Humphreys
Ms. Rebecca E. Hyde
Mr. and Mrs. Joseph T. Inglefield III
Dr. and Mrs. Atlee Rollins Johnson III
Dr. and Mrs. David Jones
Mr. and Mrs. Harley H. Jones
Mr. and Mrs. Larry O. Jones
Dr. and Mrs. Richard D. Jordan
Sarah C. Kellogg
Mr. and Mrs. William Dudley Kenerly
Mrs. Alice Hudson Ketcham
Mr. Ralph W. Ketner
Mr. and Mrs. Glenn E. Ketner, Jr.
Mrs. Glenn Elwood Ketner Sr.
Mr. and Mrs. Vernon Ketron
Mr. Tom Kirkman
Dr. Phil Kirk
Mr. and Mrs. Timothy C. Klaus
Mr. and Mrs. Jim Knowles
Mr. and Mrs. Robert H. Knox III
Mr. and Mrs. Earle Koontz
Dr. and Mrs. Wayne C. Koontz
Dr. and Mrs. Raymond L. Lassiter
Mr. and Mrs. John Laughlin
Mr. and Mrs. F. Rivers Lawther, Jr.
Mr. and Mrs. Herbert L. Lawton
Ms. Sarah B. Ledbetter
Ms. Hilda W. Lee
Miss Kelly C. Lesso
Mr. and Mrs. John G. Lewis, Jr.
Dr. and Mrs. Mark Lins
Mr. and Mrs. Erik Lipscomb
Mr. Ed A. Listerman
Mr. and Mrs. Robert F. Lowe
Dr. Deborah M. Lucas and Mr. Richard Lewis
Mr. and Mrs. Thomas R. MacMillan
Mr. and Mrs. Richard J. McGuire
Ms. Ruth L. Meade
Mrs. Richard Dwight Messinger
Mr. and Mrs. Jeffrey Michael
Mr. and Mrs. Clyde B. Mickle Jr.
Mr. and Mrs. Daniel James Mikkelson
The Honorable Franklin M. Montgomery
Mr. and Mrs. Joseph C. Morris
Mr. and Mrs. Duggan P. Murphy
Dr. and Mrs. (d) Thomas Lynch Murphy
Mr. and Mrs. William L. Nobles
Mr. James Norman
Mr. and Mrs. Enoch Anthony Nussman
Mr. and Mrs. Ricky D. Parker
Mr. Gerald C. Parker Sr.
Mr. and Mrs. Brent Parks
Dr. and Mrs. Gary H. Parks
Mr. and Mrs. Dewey Peck
Mr. and Mrs. John T. Peeler
Ms. Vicki Pierce
Ms. Gavine N. Pitner
Mr. and Mrs. William Pitt
Mr. James S. Plant
Ms. Elizabeth Carrington Poole
Mr. and Mrs. David L. Pressly Jr.
Mr. and Mrs. Steven C. Puckett
Mr. and Mrs. Sam A. Rankin
Mr. and Mrs. Richard Rankin Reamer
Mr. and Mrs. Richard Rankin Reamer Jr.
Dr. and Mrs. Richard A. Reitz
Mr. and Mrs. Carl Repsher
Dr. and Mrs. John Ozment Reynolds, Jr.
Dr. and Mrs. Ryan Kevin Rich
Mr. and Mrs. John G. Riley
Mr. and Mrs. Harold Knox Roberts Jr.
Mr. and Mrs. James F. Rollans
Mr. and Mrs. Joseph G. Rutledge III
Mr. John Bruce Safrit
Ms. Carolyn A. Sakowski
Mr. and Mrs. Bruce A. Sanborn
Mr. H. Gregory Scarborough
Mr. and Mrs. David E. Setzer
Mr. and Mrs. William E. Shaffer
Mr. and Mrs. David C. Shaver
Mr. and Mrs. Barry Victor Shive Jr.
Mr. and Mrs. Barry Victor Shive
Mr. and Mrs. Carl Meredith Short, Jr.
Mr. Richard Lee Shulenburger
Mr. and Mrs. Ian Silversides
Mr. and Mrs. Larry Sitton
Dr. and Mrs. David G. Skowronek
Rev. George R. Slaton
Dr. and Mrs. Norman R. Sloop
Mr. and Mrs. Dan Griffith Smith
Mr. Douglas A. Smith
Mr. George E. Smith
Mr. and Mrs. John M. Smith
Dr. and Mrs. Ronald D. Smith
Mr. and Mrs. Tom E. Smith
Mrs. Walter L. Smith
Dr. and Mrs. Whitman E. Smith Jr.
Mr. and Mrs. Eddy L. Snow
Mr. and Mrs. Clifford D. Sorel
Mr. and Mrs. Charles L. Sowers
Dr. and Mrs. John Robert Spencer
Dr. and Mrs. Robert Gibson Steele
Dr. and Mrs. Charles T. Steinman
Mr. and Mrs. James C. Stirewalt
Mr. and Mrs. Smith Stokes
Mr. and Mrs. Ned Alton Storey
Mr. and Mrs. David W. Swaim
Mr. Charles David Taylor III
Mr. and Mrs. Dennis E. Testerman
Dr. and Mrs. Willard Ray Thompson Jr.
Dr. and Mrs. Willard C. Thompson III
Dr. and Mrs. Erron J. Towns
Mr. and Mrs. Lloyd William Troxler Jr.
Mr. and Mrs. Robert Trundle
Dr. and Mrs. W. Craig Turner
Mr. and Mrs. Bret Urbanski
Mr. Chris H. Verner and Ms. Gail Poulton
Mr. and Mrs. Jason Albert Walser
Dr. and Mrs. W. Max Walser
Mr. and Mrs. John Michael Walter
Mr. and Mrs. Robert Charles Waters
Dr. and Mrs. Hugh Boyd Watts
Dr. John Edmund Wear Jr.
Dr. and Mrs. William W. Webb III
Dr. and Mrs. William Whitaker Webb Jr.
Mr. and Mrs. Paul D. Weisler
Mr. and Mrs. J. Jay Whittington
Mr. and Mrs. Neal Wilkinson
Mrs. Mary L. F. Williams
Mr. and Mrs. Dan R. Williams
Dr. and Mrs. Edwin Wilson

Mr. and Mrs. Norde D. Wilson
Dr. and Mrs. Edwin G. Wilson
Mr. and Mrs. Thomas Eugene
Wilson Jr.

Mr. and Mrs. Paul Bernhardt
Woodson, Jr.
Mr. and Mrs. Robert H. Wright
Mr. Braxton L. Young

\$50 - \$99 (Family)

Mr. and Mrs. Milton Reid Acree
Mr. and Mrs. Mark Stuart Alley

Ms. Lana Armstrong

Mr. and Mrs. Ronald V. Ball
Dr. Michael J. Baranski
Dr. and Mrs. Ronnie Barrier
Ms. Gwen W. Beavans
Mr. and Mrs. Clarence B. Beaver III
Mr. and Mrs. Kent Beck
Mr. and Mrs. David P. Bendert
Mr. and Mrs. David Yates Bingham
Ms. Ann Coughenour Boyd
Mr. and Mrs. Ed Brinskelle
The Honorable Charles E. Brown

Mr. and Mrs. Paul A. Brown

Mr. and Mrs. Bachman Storch
Brown Jr.

Dr. and Mrs. John Bumgarner
Mr. and Mrs. William R. Burgin
Mr. and Mrs. Donald G. Burton
Mr. George J. Busby
Mr. and Mrs. John R. Casey
Mr. and Mrs. Robert W. Charles
Mr. and Mrs. Thomas C. Childress
Mr. and Mrs. John M. Clemens Jr.
Mr. and Mrs. Melvin Glenn Cline
Mr. and Mrs. Wayne M. Cline
Cline's Landscaping & Lawncare

Reverend Cathy A. Cook and
Mr. Kenneth Criffield

Mr. and Mrs. Sam E. Correll
Mr. and Mrs. Allen K. Craven
Dr. and Mrs. John Robert
Crawford III

Mr. and Mrs. Rodney G. Cress
Ms. Helen D. Dare

**Mr. and Mrs. Charles R.
Deadwyler Jr.**

Mr. and Mrs. Norris A. Dearmon
Mr. and Mrs. Nathan Dickert
Downtown Graphics Network Inc.
Dr. and Mrs. Frederick Mast Dula Jr.

Mr. and Mrs. Alfred G. Dunn Jr.
Mr. and Mrs. James A. Dunn Jr.

Ms. Barbara Coley Earnhardt

Drs. Douglas and Laurel Eason
Mr. and Mrs. Jim Epting
Mr. and Mrs. K. V. Epting
Mr. Louis Eubanks

Mrs. Thomas Alison Fanjoy
Mr. and Mrs. J. Steven Fisher

Dr. and Mrs. Gary R. Freeze
Mr. and Mrs. Keith Gapen

Mr. and Mrs. Edgar W. Gettys
Mr. Joseph N. C. Girdler

Mr. and Mrs. Frank W. Goodnight
Mr. and Mrs. Walter H. Gordon

Mr. and Mrs. Wesley Wilson
Graham

Mr. and Mrs. Rhett E. Greene
Mr. William Grubb
Ms. Rachel A. Hamilton
Mr. T. Burt Harris

Mr. and Mrs. Jeff Heard

Mr. and Mrs. J. P. Helms
Ms. Rebecca A. Hill
Dr. and Mrs. O. Jerry Hill Jr.
Mr. and Mrs. Owen R. Hill
Mr. and Mrs. Robert C. Hinkle Jr.
Ms. Catherine Green Holladay
The Honorable and Mrs. John Leidy
Holshouser Jr.

Ms. Diane Dillon Hooper
Mr. John T. Hudson
Mr. and Mrs. William Robyn James
Mrs. Allen S. Johnson, Jr.
Mr. and Mrs. Jack S. Kepley
Mr. and Mrs. Vernon Ketron
Mr. and Mrs. George Fisher Kluttz
Honorable and Mrs. Constantine
Kutteh

**Mr. Charles C. Lane and
Ms. Tangela L. Phillips**

Ms. Kimberly Lane
Mr. and Mrs. Herbert L. Lawton
Mr. and Mrs. Mark N. Lewis
Dr. and Mrs. Richard V. Liles Jr.
Reverend and Mrs. I. Mayo Little
Dr. and Mrs. Richard W. Martin
Mr. and Mrs. Richard J. McGuire
Ms. Nancy Guy McKenzie
Mr. and Mrs. Fred Bruton Monroe
Mr. and Mrs. Timothy R. Moore
Mr. Tom A. Morgan and
Dr. Annabelle P. Morgan
Mr. and Mrs. Harold Hastings
Newman III

Mr. and Mrs. James Norman III
Ms. Anne J. Palmer

Mr. and Mrs. Jonathan Palmer
Mr. and Mrs. Douglas T. Paris, Jr.
Mr. and Mrs. Charles A. Peacock

Mr. and Mrs. Dewey Peck
Mr. and Mrs. John R. Philpott
Miss Jolene M. Philpott
Miss Belle Piper

**Mr. and Mrs. Steve Raker
Mr. and Mrs. Jack Timothy Renegar**

Mr. and Mrs. Charles E. Roe
Mrs. Hans Roemer
Ms. Nancy Ruppert
Mr. and Mrs. Bobby L. Rusher

Mr. and Mrs. Bobby Rusher II
Mr. H. Deal Safrit and
Dr. Sheila Brownlow

Mr. and Mrs. Robert Bruce Sawyer
Mr. and Mrs. David E. Setzer
Mr. and Mrs. Robert Stephen Setzer
Mr. and Mrs. Lawrence M. Shaw
Reverend and Mrs. Banks D.

Shepherd
Mr. and Mrs. D. Wayne Shepherd

Mr. John M. Sherrill
Ms. Keron Sherwin
Pam Westmoreland Sholar, M.D.
Ms. Susan Goodman Sides
Dr. Bethany Strong Sinnott

Mr. Charles Smith

Mr. and Mrs. John M. Smith
Mr. and Mrs. James Anderson
Sparks Jr.

Mr. and Mrs. Maxwell K. Spear Jr.
Mrs. Betty Bonner Sams Steele
Mr. and Mrs. J. Michael Strother
Mrs. M. Stevenson Thurston

Colonel and Mrs. Ray-Kent Troutman
Ms. Barbara Fesperman Upright
Mr. Jeroen Van Wagenberg
Mr. and Mrs. Darryl L. Wagoner

Mr. and Mrs. W. Price Wagoner II
Mr. Walter P. Wagoner
Mr. and Mrs. Walter Wall
Ms. Virginia Wall

Dr. and Mrs. John C. Webb
Mr. and Mrs. Donald C. Webster
Mr. Henry H. Westmoreland
Mr. and Mrs. Daniel J. Wieland

Reverend and Mrs. Jerry P. Wilkes
Mr. and Mrs. Robert L. Williams
Dr. Amy E. Wilson

Mr. and Mrs. Alfred Wilson
Dr. and Mrs. Robert W. Wilson

Mr. and Mrs. John J. Yelton

\$25 - \$49 (Individual)

Ms. Amanda H. Atkinson
Mr. Michael A. Blount

Ms. Diana Burge
Mrs. Fred T. Craven
Mr. Gabriel B. Cumming

Mr. Sim DeLapp

Mr. and Mrs. Eugene F. Earnhardt
Ms. Martha Lou Heitman Gascoigne
Mrs. Thomas Alison Fanjoy
Mr. and Mrs. Owen Furuseth

Mr. and Mrs. C. Layton Getsinger
Mr. and Mrs. Douglas Glasgow
Mr. and Mrs. Charles H. Goldman
Mr. and Mrs. Robert E. Goodwin

Ms. Delores Hall
Mr. Claude B. Hampton Jr.

Mr. Brian Hiatt

Mr. James F. Hodges

Mr. Seth Holtzman
Ms. Bunny V. Howell
Mr. Robert A. Jones
Mr. and Mrs. Brian Kautz

Mr. Kenneth B. Knight
Ms. Mary Anne Laningham
Ms. Marie Leonard-Hartsell
Mr. and Mrs. Ross W. Mayes

Mr. and Mrs. Joseph R. McDonald
Mrs. Rebecca Reitz McKinley
Edgar and Kivi Miller
Mr. and Mrs. Paul Rush Mitchell

Mr. and Mrs. Fred Bruton Monroe
Mr. and Mrs. Dean Michael Naujoks

Mr. and Mrs. Rusty Painter

Ms. Florence B. Peck

Ms. Barbara T. Perzel
Mrs. A. E. Quesenberry
Mr. and Mrs. Ray Raymer
Mr. and Mrs. Ray D. Raymer Jr.

Mr. and Mrs. Kevin M. Redding
Mr. and Mrs. James J. Reilly
Ms. Eleanor Sandifer
Ms. Joan R. Scott

Mrs. Eleanor E. Sifford
Mr. and Mrs. Terrence W. Sippel
Mr. Eric P. Slipp
Mr. Harley R. Smith
Reverend and Mrs. Dale O. Steele
Mr. and Mrs. Lucius H. Stephenson III
Mr. and Mrs. Wilborn S. Swaim
Mr. and Mrs. Robert E. Sylverstein
Ms. Victoria Taylor
Ms. Ann Wall Thomas
Mr. and Mrs. Charles R. Thurston
Mr. Jim Tucker
Mrs. Robert Randolph Turner III
Dr. and Mrs. Charles Thompson
Upchurch
Dr. Martha Kirkland West
Mr. and Mrs. Geof Wilson
Ms. Julia L. Wilson

Special Stewardship Gifts

Dr. and Mrs. Keith Gatlin
Mr. John H. Holton

Honorariums

In honor of Master Miles Annas
Mr. and Mrs. John G. Annas

In honor of Mike and Elizabeth Bauk
Mr. and Mrs. Robert L. Baker

In honor of Hilton and Betsy Charles Cochran
Ms. Nancy Ruppert

In honor of Bob and Sara Cook
Sue Walser

In honor of Lethia T. Duncan
Colonel and Mrs. Ray-Kent Troutman

In honor of Wayne Cook and Paige Helms
Reverend Cathy A. Cook
and Mr. Kenneth E. Criffield

In honor of the preservation of Coolemee Plantation
Ms. Lydia Williams

In honor of Emory Graham and Tom Valley
Mr. Peter W. Hairston

In honor of Bruce Kolkebeck and Troop 442
Mr. and Mrs. Kenneth Kolkebeck

In honor of Jeffrey Dean Michael
Mr. Alex Cousins

In honor of Bud Mickle
Mr. and Mrs. Charles A. Bernheim

In honor of Pam and Joe Morris
Mr. and Mrs. Stephen Asbury Martin

In honor of Carl Repsher
Charles H. Harris

In honor of Fred and Alice Stanback
Mr. and Mrs. Ned A. Storey

In honor of Candace Troutman
Colonel and Mrs. Ray-Kent Troutman

In honor of Sue Carter Walser
Kathryn Conrad
Brigadier General and Mrs.
William Lackey
Sarah G. Borders
Mr. and Mrs. C. Layton
Getsinger
Mr. and Mrs. Robert W.
Stamey

Memorials

In memory of Hervey Kercheval
Mr. Alfred M. Brown

In memory of Larry Shaw
Mrs. M. E. Bullard

In memory of Virginia Holt Spake
Mr. Angelo P. Capparella
Arlene Edwards Thompson
Ms. Dorothy S. Welling

In memory of Lucius Perry Bell III
Annette Bell Roberts

In memory of Milton Crowther
Mr. and Mrs. Andrew J.
Abramson

In memory of Martha Hughes Dusch
Mr. Frank A. Dusch, Jr.

In memory of Judge Peter Hairston
Arlene Edwards Thompson

In memory of Judge Peter and Lucy Hairston
Mr. Carroll Leggett

In memory of Frances Kelly Hannah
Mr. David Hannah and
Ms. Laurie McDade

In memory of Araminta E. Harris
Mr. T. Burt Harris

In memory of Nonnie Kolkebeck
Mr. and Mrs. Kenneth
Kolkebeck

In memory of D. C. and Frances Linn
Mr. Peter Wilson Hairston
Ms. Margaret J. Newbold
Mr. and Mrs. Charles A.
Peacock

In memory of Edward B. McKenzie, M.D.
Nancy Guy McKenzie

In memory of Janet Magaldi
Mr. and Mrs. Larry Martin
Coggins
Ms. Diane Dillon Hooper
Mr. and Mrs. Jonathan B.
Marshall
Mr. and Mrs. William L.
Martin
Mr. and Mrs. John Harris
Morrison, Jr.
Mr. and Mrs. Robert T.
Nussman, Jr.
Mr. and Mrs. Walter R.
Ramseur
Mr. and Mrs. Frank A.
Rankin III
Mr. and Mrs. Bill Truitt

In memory of Irene Gentry Monday
Mr. and Mrs. Doug Angel

*In memory of Pauline Mullenix,
Constance Kelly and Eva Lefler*
Mr. Jim Tucker

In memory of Joe and Sara Rowe
Dr. and Mrs. Charles F. Floyd

In memory of Jeanne N. Wall
Dr. David M. Jones
Jennifer Hicks
Mary Joan Pugh
Karen Anman

In memory of Albert F. Walser
Drs. Douglas and Laurel
Eason
Mr. William E. Hollan Jr.

In memory of Alfred Welling
Mr. and Mrs. Wayne Brooks
Mr. and Mrs. W. Leighton
Carmichael
Dr. and Mrs. John G.
Craddzck
Mr. and Mrs. M. Frances
Crowell
Design Research Group
Dr. and Mrs. Charles R.
Fernandez
Mr. and Mrs. Paul M. Griffith
Dr. Matt Gromet
Mr. and Mrs. Lester K.
Howard
Mr. G. Miller Jordan
Ms. Hilda W. Lee
Mr. and Mrs. Joe T. Millsaps
Mr. Hugo A. Pearce III
Mr. and Mrs. J. C. Phillips, Jr.
Mr. Thomas Phillips
Mr. and Mrs. George Stilwell
Mr. and Mrs. William
Vandiver
Ms. Delores B. Welling
Ms. Dorothy S. Welling
Dr. and Mrs. Whitman E.
Smith, Jr.
Ms. Jackie Walsh
Ms. Elizabeth Wilson
Mr. and Mrs. James L. Young

Upcoming Hikes and Events

Uwharrie Trail Scenic Vista Hike, Sunday, March 21st, 1:00pm

Join us for this rare opportunity to hike an unconnected portion of the historic Uwharrie Trail. This hike is of moderate to difficult intensity, as we climb to the pinnacle of a scenic Uwharrie mountaintop, which offers spectacular breathtaking 360 degree views. Please RSVP by calling The LandTrust at 704-647-0302.

Canoe and Hike on our Newest Acquisition! Sunday, April 25th, 1:00pm

Join us at Morrow Mountain State Park at 1:00pm, where park staff have graciously agreed to host us as we canoe across Lake Tillery up the Uwharrie River to our newly acquired Capel Property, then hike to see the unique waterfall on Dutchman's Creek and spectacular views of the Uwharrie Mountains. We expect this event to fill up fast, so RSVP soon (crystal@landtrustcnc.org or 336-633-0143), to reserve your spot! If you have your own canoe or kayak, no need to RSVP.

Kids Fun Day at the RiverPark at Cooleemee! Saturday May 15, 10:00am

Time to start thinking about warmer weather—and a fun day at the Bullhole! LandTrust staff will lead a creepy crawly walk here, looking for salamanders, turtles and snakes—oh my! This event promises to be fun for kids of all ages!

Annual Meeting at Dunn's Mountain Park, Thursday June 3rd, 6:00pm

Mark your calendars and save the date for our annual meeting at Dunn's Mountain Park. Join us for dinner and a sunset hike. Annual meeting is a fun time to get together and learn more about the conservation projects you have made possible.

LandTrust Property for Sale: Great Opportunity for Right Person

As part of our long term contract to purchase nearly 3000 acres from the City of Kannapolis which we took on in 2005, we acquired more than 450 acres in Western Rowan County along Sills Creek. With frontage on Upright and Graham Roads, this property was expected to become part of the new Second Creek Game Lands created with earlier purchases from Kannapolis. However, due to the turn in the economy, the money that we had hoped to pay off the debt associated with this property is not forthcoming. Thus, we are now forced to market the property for sale to a conservation minded purchaser.

The site will still be restricted with a conservation easement, limiting uses to hunting, farming, and limited forestry. However, two existing homesites can be maintained, restored, or replaced.

We are asking less than \$2600 per acre for this property located 9 miles from Mooresville, 14 miles from Statesville, and 9 miles from Salisbury. Property can be divided once to make two separate farms.

Please contact Jason Walser at The Land Trust for Central NC for additional information, by phone at (704)-647-0302.



Beautiful rolling preserved agricultural lands.

Longleaf Restoration Project

The US Fish and Wildlife Service and Environmental Defense have partnered to create a truly one of a kind opportunity. In this joint project—working to restore some locally collected and raised Uwharrie Ecotype longleaf pines. This unique and diverse ecosystem houses a number of endemic and rare species, and requires regular prescribed burns to maintain and encourage forest health.

Although longleaf pine are typically thought of as a coastal plain species, longleaf were once widespread in the Uwharries, as well. These trees live in a different environment, and are therefore a slightly different ecotype. Through this joint project, landowners who live in this focal area can apply for consideration to receive funding for longleaf restoration and management.

If you are a landowner interested in exploring whether longleaf pine might be



Laura Fogo and Boon Chesson with young Uwharrie Ecotype longleaf saplings.

a good option for your land, or you want to learn more about land management options and opportunities in general, please contact Laura Fogo with the US Fish and Wildlife Service at 910-695-3323, and learn more about all the many great programs that provide financial and technical assistance to help landowners improve wildlife habitat.

Work day on Bittering Property

The LandTrust Stewardship Committee rose to the challenge yet again, and helped with efforts to control invasive species on the Bittering Property. Tree-of-heaven (*Ailanthus altissima*), also known as Chinese sumac, is an invasive fast-growing tree that can quickly take over and is difficult to control. Simply cutting them results in rapid sprouting of more trees, so they must be treated by a method of hack-and-squirt, which basi-



Preparing to hack-and-squirt invasive species..



Big thanks to our Stewardship Committee!

cally means making a small cut through the barks surface and spraying an herbicide at the place of the cut.

Committee members and staff also sprayed other noxious weeds and invasives, including Chinese privet (*Ligustrum sinense*), a small evergreen shrub that is perhaps the most prolific invasive problem in North Carolina. Although it is challenging to manage these invasive, the rewards are a healthier ecosystem for all to enjoy.



Kids enjoyed a fun event at Eagle Point Park!



Scenic views from newly protected property.



Thanks to John Isenhour for leading our tour!

THE LANDTRUST FOR CENTRAL NORTH CAROLINA

The LandTrust is a private, nonprofit organization working with private and public landowners to protect the special natural areas, family farms and rural landscapes of Anson, Cabarrus, Davidson, Davie, Iredell, Montgomery, Randolph, Richmond, Rowan and Stanly Counties. With 501 (c) (3) status, all donations to The LandTrust qualify for maximum tax deductions.

BOARD OF DIRECTORS

Dwight F. Messinger, President
 Edward P. Norvell, Vice President
 Peg K. Morrison, Secretary
 David F. Simmons, Treasurer
 Jennifer Baptiste
 Moni C. Bates
 Darryl Corriher
 Marla Coulthard
 Lindsey Dunevant
 Amy Grissom
 John M. H. Hart
 Billy Joe Kexley
 William W. Medlin
 Jeffrey D. Michael
 Joseph C. Morris
 John Peeler
 Lynn F. Raker
 Dan Williams

BOARD OF ADVISORS

Joe Adams
 Raymond D. Coltrain
 J. Myrick Howard
 John Lentz
 Joseph McDonald
 Alice Stanback
 Fred Stanback
 William C. Stanback
 Charles E. Roe
 Roberts E. Timberlake

STAFF

Jason A. Walser, *Executive Director*
 Andrew Waters, *Operations Director*
 Barbara Martin Lawther, *Development Director*
 Crystal Cockman, *Uwharrie Conservation Specialist*

www.landtrustcnc.org



To protect and preserve the land—natural areas, rural landscapes, family farms and historic places within North Carolina's heartland.

P.O. Box 4284
 Salisbury, NC 28145
 704-647-0302

Non-Profit Org.
 U.S. Postage
PAID
 Salisbury, NC
 Permit No. 111