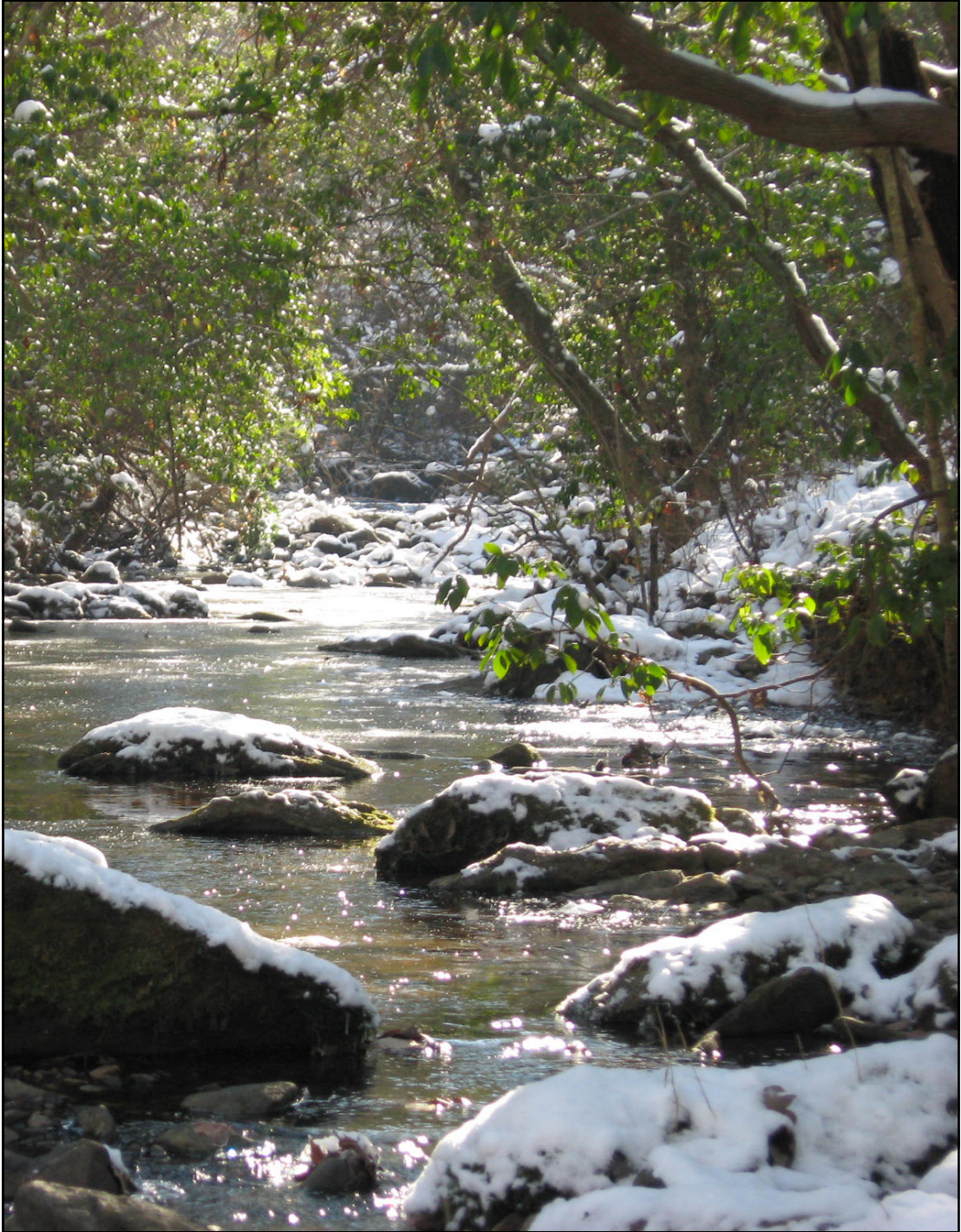


# THE LANDMARK

WINTER 2009



*Wintertime in the Uwharries—Snow-covered Barnes Creek*

*Inside this issue:*

- Letter from the Director
- A Year in Review
- Land Protection Projects
- Previous Hikes and Events
- Upcoming Outings and Events
- Thanks to Our Supporters
- Conservation Connections
- Board Member Profiles



# LETTER FROM THE DIRECTOR

*"The strongest oak of the forest is not the one that is protected from the storm and hidden from the sun. It's the one that stands in the open where it is compelled to struggle for its existence against the winds and rains and the scorching sun." - Napoleon Hill (1883-1970)*



*Executive Director, Jason Walser*

Despite many challenges, these are good times for The Land Trust for Central North Carolina. Yes, many of our donors are Wachovia and Bank of America shareholders; and, yes, state and federal conservation funds appear to be on the chopping block as our governments try to balance budgets; and yes, foundations are going to give less this year due to stock market performance; and yes, many supporters in our region have lost their jobs. But times are still good for us, and we are ready to have a successful year of conservation in the Southern Piedmont of North Carolina. Our Board of Directors has committed to this reality; our staff is preparing for it; and our grandchildren's children demand it.

Despite the uncertain financial times, we are seeing more land conservation opportunities than ever before. We get phone calls regularly from landowners hoping we can purchase important land or conservation easements from them. There is a federal tax incentive for donated conservation easements through 2009 which is the most favorable incentive for such donations in tax policy history. Our neighbors are using our parks and national forests in greater numbers as they stay closer to home, and they are recognizing the need to expand and improve them. And land prices appear to be dropping in parts of our region.

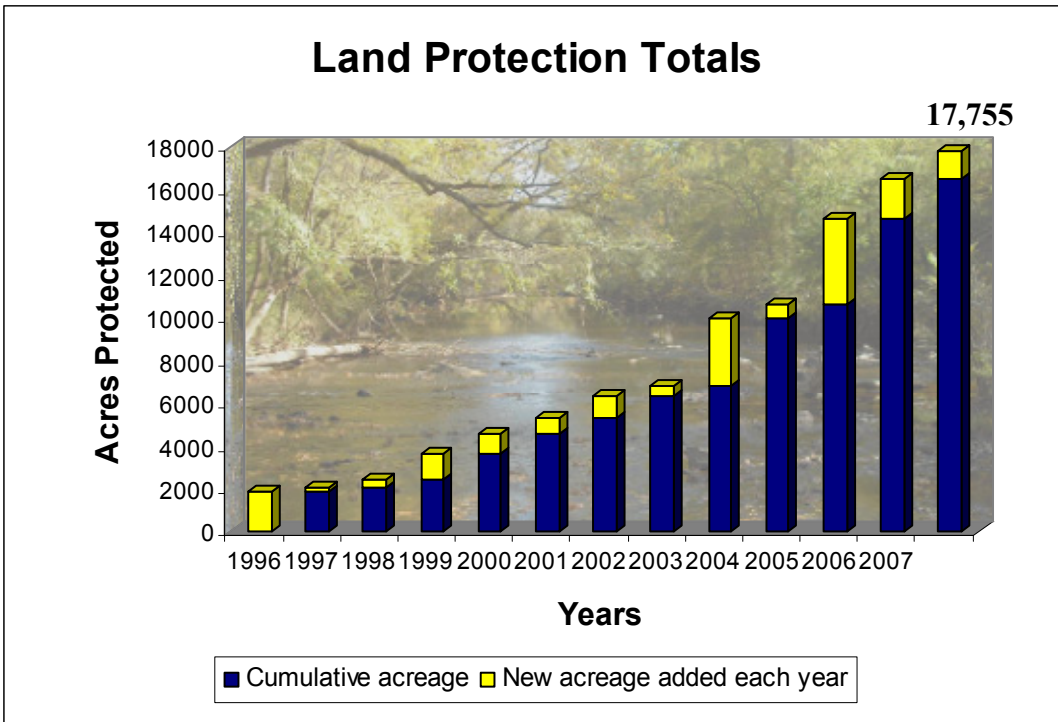
It is indeed going to be a challenging year for us all. But if we do not do everything we can to step up to the plate during this unique period of American history, we will be kicking ourselves a few years from now when this economic cycle has turned. That's because our time frame for effectiveness is measured in perpetuity. That is, The LandTrust for Central North Carolina is in the business of forever, and when you take on such an ambitious time frame, you don't have the option of "hunkering down" during economic downturn.

So how are we positioning ourselves to take advantage of such opportunities when resources are so scarce? By working in new ways, more strategically and more efficiently. We are already short staffed, but we will continue to cut every possible expense out of our budget, and this year's budget as approved by our business savvy board of directors is nearly 20% lower than last year's. We are preparing new special events to reach donors in communities where we have not been as active in our fundraising, and we are preparing a promising new planned giving campaign. We will be spreading the message to landowners who love their land that this organization is uniquely qualified to not only protect their land in perpetuity, but also to use it to save other land in their region. We will show investors who have had their dividends cut from investments how charitable lead and charitable remainder trusts can help them turn otherwise low performing assets into high yield streams of cash flow that ultimately help us with our conservation work.

We will also be working on finding more conservation minded investors, who will buy properties we might have wanted to buy ourselves but cannot afford. Such conservation buyers will put easements on high priority properties and recognize the tax benefits, ensuring the property's ecological values are permanently protected. And we are promoting our "trade lands" program, whereby banks, developers, or private property owners can donate non-conservation properties they cannot sell themselves and reap substantial tax benefits. We will hold such properties for a few years as the economy improves and then re-sell them with proceeds going towards buying nearby properties with high conservation values.

Yes, we are working our hardest to ensure that when this storm is over, we will be standing strong. But more importantly, we are working to ensure that we capitalize on temporal opportunities to save some of the best landmarks of our region that we might not ever get the chance to protect again. Thank you for standing strong with us to make a difference for those who will follow in our footsteps.

# Land Protection Update - 1,303 Acres Conserved in 2008!

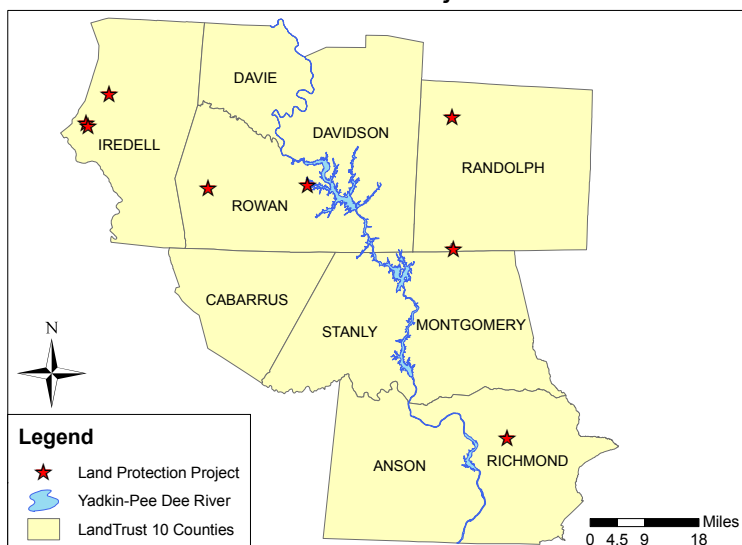


Each new year marks a time to pause and reflect on the projects of the previous year. Most notably, those that have closed - land that has been permanently protected. But as staff rushes to get year end project's closed, we also get to monitor all the great properties protected in years past. Visiting these sites is a wonderful reminder of the important areas that are already saved, from beautiful rolling Stanly County farmland, to challenging hikes in the Uwharries, to gorgeous bottomlands on the South Yadkin River. The 10 county area The LandTrust covers is an expansive one, full of a diversity of ecosystems and resources. This year, perhaps more so than previous recent ones, shows how truly diverse our protection efforts are.

This year saw the completion of several projects, including our first ever in Richmond County. The LandTrust covers a small portion of this county within the Yadkin-Pee Dee watershed, but had not completed a project here until this year. This easement is already driving more interest in this important and unique area.

Yearly monitoring visits also allow us to take a moment to talk to the landowners who have saved their land, whether last year or ten years ago, and experience afresh how important that decision is to them, and to all of us. Hearing their story is a rejuvenating and enriching experience every time. From the projects that closed this year to all the projects of previous years, each one has its own great history, and a future sure to be just as rich thanks to landowners who had the foresight to preserve it. Thanks to you all for saving the places we love in the Piedmont of North Carolina!

## LandTrust for Central NC - Projects Closed in 2008



# Brothers Reid and Kenneth Gray Protect Iredell County Farmland

Drive just two miles north after exiting Interstate 77 on scenic Old Mountain Road in western Iredell County and the Brushy Mountain range jumps out at you in all of its beauty and grandeur. And when you first spot them, you will likely be viewing them across land owned by Reid or Kenneth Gray, two brothers who have accumulated some of the best farmland in Iredell County over the course of their farming lives.

In a truly unique and special fashion, both brothers have donated conservation easements on two of their gorgeous properties in 2008, preserving scenic vistas, some of the region's best farmland, and important wildlife habitat for future generations to enjoy.

Kenneth and his wife, Becky Gray, donated a conservation easement on 126



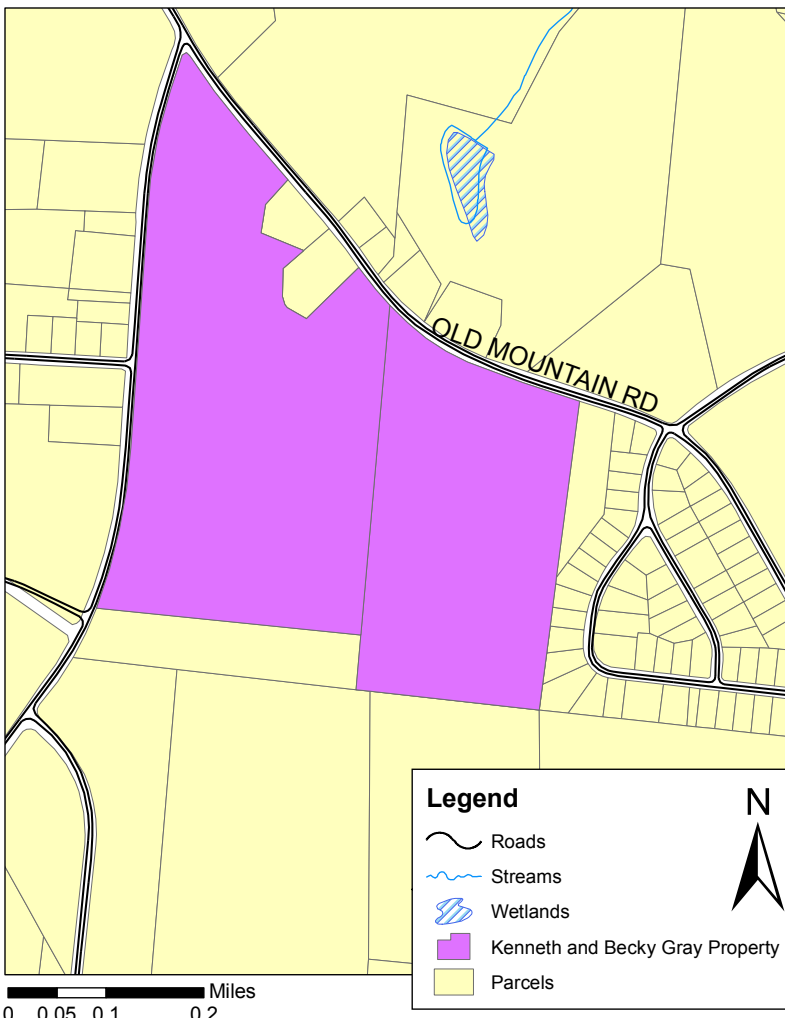
*Rolling agricultural fields are abundant on the newly protected farmland.*

acres at the intersection of Old Mountain Road and New Sterling Road which is comprised largely of crop fields and some hardwoods. The property is situated prominently behind the historic Gray House (owned by Reid and Peggy Gray),

which was built in 1905 and was previously used as a bed and breakfast. The land is used primarily for small grain production, and provides scenic relief from the adjoining subdivision to its south. Views of the Brushy Mountains can be had from any number of vantage points from these fields which also serve as the backyard of Kenneth and Becky Gray.

Kenneth had been thinking about a conservation easement for several years before he and Becky decided to go ahead and make the commitment. Becky was an instrumental force in helping Kenneth take the action that she knew he wanted to take in conserving

## Kenneth and Becky Gray Property





his land. This particular tract of land has great historic significance, having originally been owned by early settlers protected by the historic Fort Dobbs British outpost.

The 130 acre property protected by Reid and Peggy is located several miles north of their homes on the South Yadkin River. It is a beautiful, mostly wooded tract managed for wildlife and some timber production. With more than one mile of frontage on the South Yadkin River, this conservation easement will protect the drinking water supply of the City of Statesville, which is located just a



*Reid and Kenneth Gray on their family farm in Iredell County.*

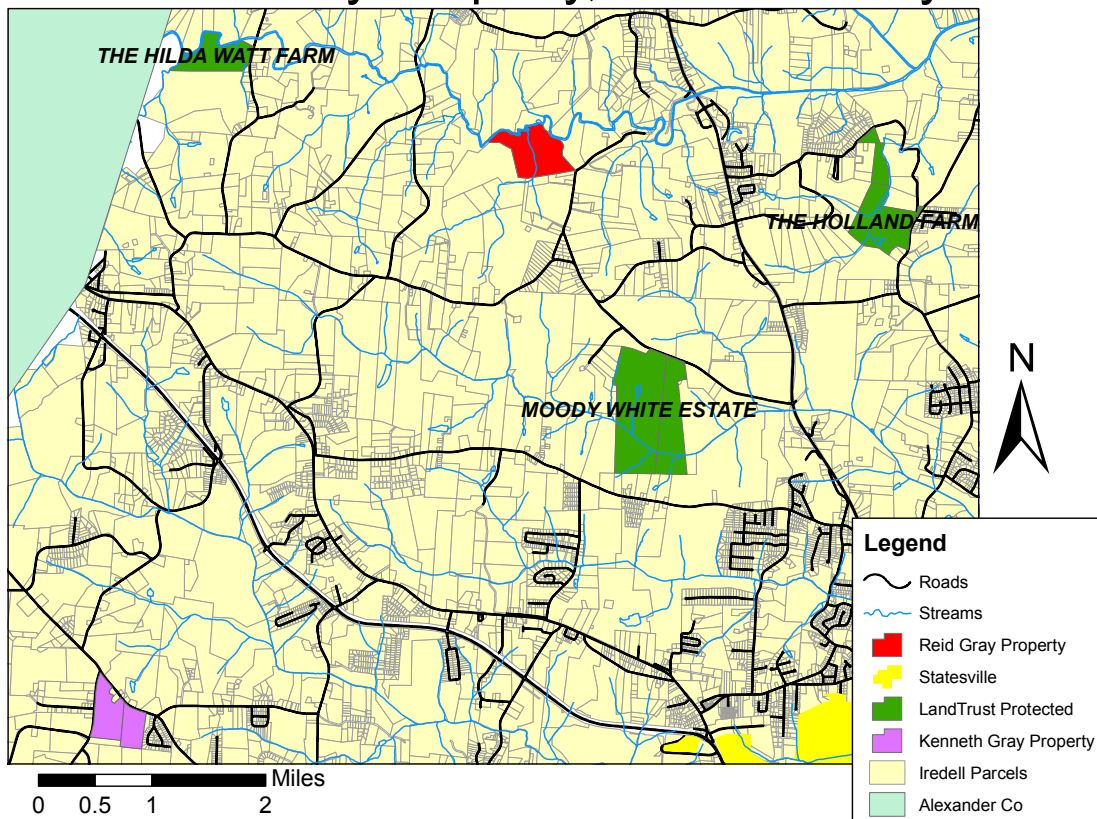


*Beautiful farmland and prime farm soils.*

couple of miles downstream. The South Yadkin River corridor in Iredell County has been a corridor of interest for The Land Trust since our inception. To date, we have protected more than 3,000 acres along the South Yadkin in Rowan, Iredell, and Davie Counties.

The property boasts abundant wildlife and high value hardwood forested buffers along the South Yadkin. Named “Cove Creek Farm,” the tract is situated less than six miles north of Statesville just off scenic Highway 115. Thanks so much to the Gray families for preserving their land!

## Reid Gray Property, Iredell County



# First Richmond County Project— The Webb Farm Conserved

As you drive down interstate 73-74 and cross into Richmond County, it's almost like you've entered a different world. Transitioning from the Uwharries, you're leaving the rugged terrain of granite outcrops and rocky bedded streams, into a world of flat lands, sandhills, fox squirrels, pygmy rattlesnakes, and wiregrass. The land of the longleaf pine. This is truly a portion of our region unlike the rest, unique and beautiful. And now thanks to Bill Webb, 115 acres of this picturesque setting is permanently protected by conservation easement. In fact, the entire Webb Farm, which encompasses more than a thousand acres, is situated directly on this transition area, and possesses both Uwharrie type ecosystems, with mountain-like streams, and sandhills ecotones, with longleaf pine and flat lands.



*Restored longleaf pine on part of property.*

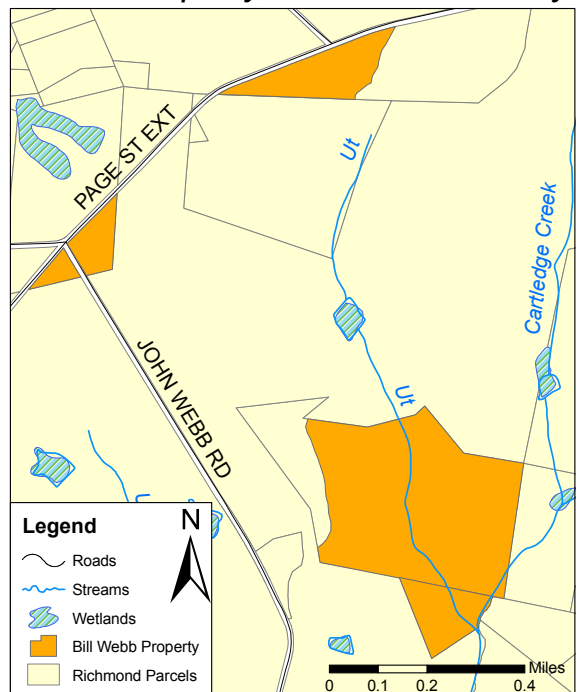
Bill Webb, an attorney in Rockingham, was raised in a hunting tradition, and has worked hard to manage his historic family farm as a hunting preserve. In addition to restoring longleaf pines, he actively manages for quail habitat with prescribed burns. Not surprisingly, his excellent wildlife management efforts garnered him the title of WRC Small Game Conservationist of the Year in 2004. The Webb Farm has been featured in *Business North Carolina*, the *Upland Gazette*, and the *Progressive Farmer*, which states that “Webb has worked diligently on his wildlife habitat, and it’s paying off for him.” The hunting here has been featured on ESPN and OLN. This easement protects the current uses of the property and restricts development, allowing no home sites. The property has a beautiful hunting lodge on an adjacent tract.



*The Webb Farm has a strong tradition of habitat restoration and management.*

“As a wildlife conservationist and habitat manager, Bill Webb is a great model and leader in conservation efforts in this area,” says Crystal Cockman, Uwharrie Conservation Specialist with The LandTrust. “The LandTrust is very excited to have closed its first easement in Richmond County, and couldn’t have asked for a better landowner to work with or a more ideal project. From the conversion of a tobacco farm into a recreation-based hunting preserve, to the restored longleaf and excellent management practices, this easement has everything you could ask for in a project.” This easement is a wonderful example sure to open doors to more conservation here in the future.

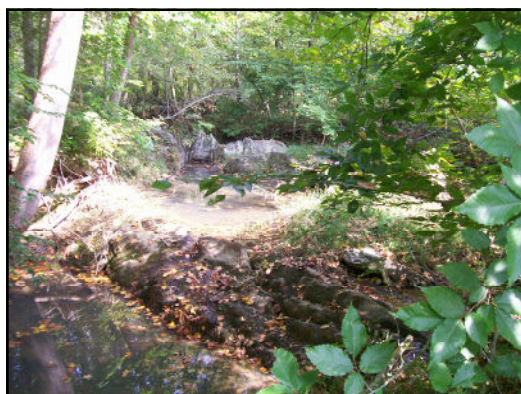
## Webb Property, Richmond County





# Conservation efforts multiplied— Bevan Property Conserved

If the name Ricky Bevan sounds familiar, it's for good reason. He is one of the three partners who owned the King Mountain Property, purchased by The LandTrust in April of this year, and was truly instrumental in seeing that important property protected. The King Mountain Property was a crucial acquisition, as it provides a critical link in the Uwharrie Trail, possesses natural heritage elements including the federally endangered Schweinitz's sunflower, and also houses a tributary within the Barnes Creek outstanding resource watershed.

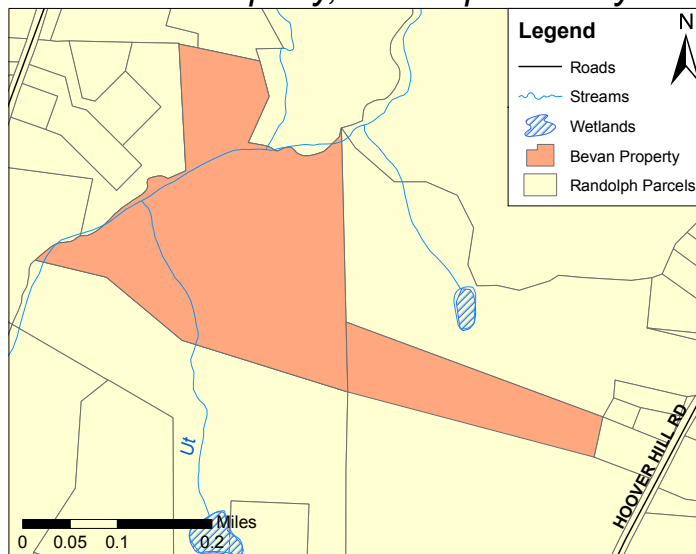


*Beautiful waterfall on Uwharrie tributary*

After Ricky sold his interest in King Mountain, he took the money and bought a tract beside the property where he lives in the Trinity area of Randolph County, and knew immediately what he wanted to do with it – preserve it. This year's donation of 50 acres is actually adjacent to this newly purchased tract, and has three tributaries to the Uwharrie River and hardwood forests. Ricky and his wife, Kay, plan to donate an easement on the newly acquired portion next year, and include with it about thirty acres adjacent to his residence, which has a beautiful rocky stream and pond on it. In total, they will have protected over 130 acres.

A quick drive around this area reveals a beautiful landscape of Uwharrie Mountains. In the fall the reds, oranges and yellows brighten the landscape, with rolling

*Bevan Property, Randolph County*



hills around every bend in the road. But the area's close proximity to High Point and Winston-Salem threaten this gorgeous landscape, as this area of Trinity is facing increasing development pressures. But there are a few landowners here who are working hard to keep it beautiful. Ricky's property is near the protected John Holton Farm, 244 acres with a historic home, forests and fields. Other landowners and farmers in the area have also expressed interest in conservation easements.



*An old chimney marks the remains of a historic house once found on property.*



# Dunn's Mountain Nature Walk



*Over 40 LandTrust supporters came out to see and hear the history of Dunn's Mountain Park.*

On November 16th, a delightfully warm and clear fall day, about 45 people joined The LandTrust for an interpretive hike and behind-the-scenes look at Dunn's Mountain Park, part of the Rowan County Parks and Recreation system. The hike was led by longtime LandTrust supporter and local naturalist Bob Pendergrass, supervisor of the Nature and Learning Center at Dan Nicholas Park.

Bob regaled the crowd with tales of the natural and human history of Dunn's Mountain, which has been associated more with the quarrying operation that has eaten away a small portion of the mountain face in recent years but also contains some extremely rare geologic structures and plant communities. But the highlight of the hike was at the newly constructed observation tower on top of the mountain, where the hikers were treated to a spectacular 360-degree view featuring the Uwharries to the southeast, the Sauratown Mountains to the northeast, and the Brushy and Appalachian Mountains to the northwest. And, of course, the view of downtown Salisbury three miles away was amazing.

The LandTrust for Central North Carolina played a key role in the creation of Dunn's Mountain Park, purchasing the 82-acre property in a bargain sale from the Dunn's Mountain Pink Granite Company in 2001. In 2005 the property was transferred to Rowan County, which opened it as a public park facility in 2006. The LandTrust wishes to express its sincere thanks to the Rowan County Parks and Recreation Department and especially Bob Pendergrass, our dear friend and great supporter, for hosting this great event.



*Bob Pendergrass gave a compelling overview of the park and the history of its protection.*



# Heartland Uwharrie Bus Tour

Temperatures rose into the low 70s as Heartland 100 members and members of the Board of Directors loaded onto a bus for an afternoon excursion into the Uwharrie Mountains on October 23rd. Departing from the LandTrust offices in Salisbury in the early afternoon, the bus made its way towards Montgomery County.

After a short stop for snacks and drinks at the Eldorado Outpost, the bus traveled deep into the Uwharrie National Forest. The tour visited numerous historical land marks in the region. One of the first stops was at the Low Water Bridge, where The LandTrust owns 1280 acres of nature preserve on the Uwharrie River. The next stop was the historical Jumpin' Off Rock, located on United States Forest Service Property, with a great view of Barnes Creek. Another stop included the Pisgah Covered Bridge, which is one of the last covered bridges left in the state, with property here owned by The LandTrust and Zoo, and faithfully maintained by the local community.

At each location, the passengers were encouraged to exit the bus and explore the unique ecology found only in the Uwharries. The emerging reds, oranges, and yellows of the fall foliage, and the crisp fall air, provided a beautiful backdrop for the pristine Uwharrie River and its numerous tributaries.



*Heartland members stop to check out the view at the Jumpin' Off Rock.*

The travelers were treated with a lecture by Dr. Gary Freeze, a history professor at Catawba College, on the history and sociology of the Uwharrie region. Dr. Freeze incorporated geography, migration, politics, and economics to paint a picture of the region. He also provided links between the Uwharries and Rowan County. Guests were treated to drinks and light hors d'oeuvres at the Pisgah Covered Bridge as the sun set over another glorious fall day in the Uwharries.



*LandTrust supporters take a break and photo opportunity at the Pisgah Covered Bridge.*

# Ornament Making at Green Goat Gallery in Spencer

On Saturday, December 6, Anne and Andrew Waters graciously opened their Green Goat Gallery in Spencer for the 2<sup>nd</sup> annual LandTrust Ornament Workshop. Children and adults gathered and put their creative abilities to good use as they made holiday treats for wildlife. Among the treats were Pine-tastic Pinecone Feeders, Birdy Bagles, and hand-strung cranberry garland. LandTrust volunteers had peanut



*Eli Waters has fun decorating and then devouring this delicious treat during the event.*



*Attendees created natural ornaments for use at our LandTrust Tree Trimming on Sunday.*

butter, bird seed, cranberries, shortening, bread, bagles, and raffia available for workshop participants.

After preparing yummy treats for birds and other wildlife, it was time for the workers to enjoy a treat of their own! Anne Waters supplied giant gingerbread men, and the children were allowed to decorate them with icing, gumdrops and sprinkles!

# Tree Trimming in Centennial Park

On Sunday, December 7, LandTrust staff and volunteers met in Fulton Height's Centennial Park to decorate for wildlife. A stately fir tree was festooned with cranberry garland and adorned with colorful ornaments. The fir was planted by The LandTrust to honor Fulton Heights resident Maggie Blackwell, who was instrumental in making Centennial Park a reality. A very jolly Santa and Mrs. Claus made a surprise visit to help the children decorate. Mayor Susan Kluttz was also present to help spread holiday cheer! In

spite of the chilly temperature, spirits were high and tidings of joy were felt by all.



*Kids were surprised by a special visit from Santa and Mrs. Claus!*



*The park received a newly planted tree and the birds enjoyed the delicious ornaments!*



## LandTrust Annual Open House

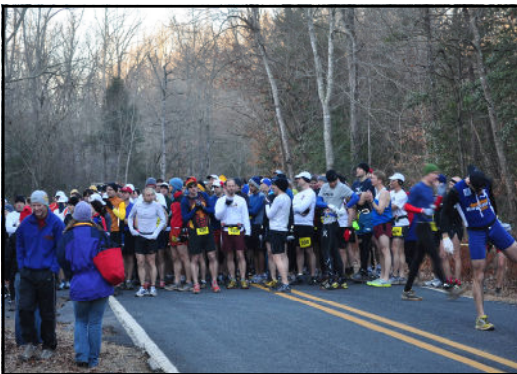
Always a popular event, this year marked the third annual LandTrust Open House, and it was the biggest yet - with over 70 people in attendance! Friends and supporters enjoyed socializing with staff and board members at our main office in the Historic Salisbury Train Depot. The Open House is an informal event and allows us the opportunity to talk about upcoming events, hikes and land protection projects. From easement donors to committee members a variety of folks got to know one another and The LandTrust better. Hope to see you there next year!



*Guests enjoyed good food and fellowship at the third annual LandTrust Open House.*

## Uwharrie Mountain Run 2009!

The LandTrust assisted with the 18th annual Uwharrie Mountain Run on February 9th, 2009. This spectacular event features 8, 20, and 40 mile races along the Uwharrie Trail in Montgomery County. The weather this year could not have been more perfect for the event, with blue skies



*Eager runners await the start of the 20 mile race event as the sun starts to come up.*

and highs nearing 70. For the Third Year, The LandTrust for Central NC was the recipient of the proceeds of the event, which showcases our unique and beautiful region. The current race organizers have handled the event for the past seven years—thanks so much to them for their great leadership on a fabulous event! We hope to see you next year, too—but be sure to register early, as this popular event filled up in less than eight minutes this year! Check it out at [raceuwharrie.com](http://raceuwharrie.com).

## LandTrust Names 2009 RiverDance Committee

The LandTrust for Central North Carolina announces the committee for the 9<sup>th</sup> annual RiverDance fundraiser, to be held on August 15, 2009, at the Historic Salisbury Station in Salisbury. Jessica and Nick Goodman will chair the event, assisted by Jennifer and Patrick Baker, Gwin and Matt Barr, Lynn and Robert Bertram, Ann and Bucky Cline, Nancy and Wilson Graham, Deborah and Dyke Messinger, Margaret and William Nobles, Meredith and Bryan Overcash, Addie Laurie and Richard Reamer, Heather Roberts, Liz and Rob Sawyer, Starr and Vic Shive, Jacqui and Victor Shive, Luanne and Chip Short, Carole and David Simmons, Nichole and Erron Towns, Dana and Brad Walser, Scotti and Billy Webb, Jan and Dan Williams, and Beth and Paul Woodson.

RiverDance 2008 raised over \$40,000 which has enabled The LandTrust to continue land protection efforts at the confluence of the Yadkin and South Yadkin Rivers. RiverDance is the major fundraiser for The LandTrust, and is open to the public. Please call 704.647.0302 to request an invitation. We hope to see you there!

## Upcoming Excursions and Events

- **Morrow Mountain State Park Hike, Sunday, March 22nd**  
Join The LandTrust for Central NC on a picnic hike at Morrow Mountain State Park on March 22nd! Enjoy the beautiful landscape views from the park while the leaves are still off! The hike will be a moderate 3-5 mile hike, followed by a picnic lunch. Please RSVP to Crystal at [crystal@landtrustcnc.org](mailto:crystal@landtrustcnc.org) or by phone at (336) 633-0143.
- **Yadkin River Canoe Trip, Sunday, April 19th**  
Our annual spring canoe trip is coming up soon! Please join us on Sunday April 19th for a fantastic trip down the Yadkin River. This event always fills up fast, so RSVP soon if you would like to attend, and for more information, please email Andrew at [andrew@landtrustcnc.org](mailto:andrew@landtrustcnc.org) or call (704) 647-0302.
- **John Hart Book Pre-Release Event, Sunday, May 10th**  
Best-selling author John Hart has graciously agreed to allow The LandTrust to again hold at the Historic Salisbury Station a pre-release event for his newest novel, *The Last Child*. John will discuss his newest book and attendees will receive a signed copy, before the actual release date of May 12th! Tickets will soon be available for purchase on The LandTrust's website, [www.landtrustcnc.org](http://www.landtrustcnc.org).
- **Annual Meeting, Date and Location TBA**  
This year's annual meeting for easement donors and supporters will occur in May. Location and time TBA. Check our website for more info.
- **RiverDance 2009, Saturday, August 15th**  
Save the Date! Our annual fundraising party, RiverDance, is August 15th, 2009!



\*To receive updated information on LandTrust events, subscribe to our electronic newsletter by sending your e-mail address to [andrew@landtrustcnc.org](mailto:andrew@landtrustcnc.org). Or check our Web site

## Possible Benefits of Planned Giving

The LandTrust is a private, non-profit organization and relies upon the generous gifts of its members. While you may be passionate about our work, you may also feel limited in the amount of financial support you can offer. Due to current economic conditions, you may worry about outliving your resources and that a charitable donation might impact your financial security. Or you may be unwilling to do anything that could reduce the size of the estate you'll pass on to a spouse or heirs.

Fortunately, there are other ways to donate besides outright gifts of cash. If you have non-income producing assets such as stock, houses, or commercial real estate, there may be opportunities to turn such assets into income producing assets while at the same time avoiding capital gains taxes and helping The LandTrust for Central NC. Such planned giving strategies are called charitable trusts.

There are several types of charitable trusts, and some of them are particularly

attractive right now for certain situations due to low interest rates. The "charitable remainder trust" described earlier may be attractive to persons who have had other income sources cut.

There are many different ways that persons interested in supporting our work can use planned giving to leave a perpetual legacy of conservation in NC's heartland. Please call Jason Walser at The LandTrust or your trusted financial advisor for additional information on such opportunities.

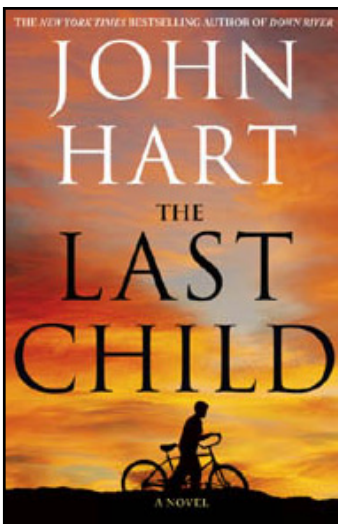




# John Hart's Third Novel Set to Be Released This Spring!

The LandTrust is pleased to announce that best-selling author John Hart will be honored at a reception at the Historic Salisbury Station on Sunday May 10th. John will discuss his latest novel, *The Last Child*. Once again, John is allowing The LandTrust to hold a pre-release event, as the actual release date is May 12.

John's New York Times bestselling debut, *The King of Lies*, was widely acclaimed as a suspenseful, poignant literary thriller. His second novel, *Down River*, surpassed his earlier success, transcending



the barrier between thriller and literature and winning the 2008 Edgar Award for best novel. Now, with *The Last Child*, he achieves his most significant work to date, an intri-



cate, powerful story of loss, hope, and courage in the face of evil.

All funds raised from this event will benefit the work of The LandTrust. Additional event details will be listed on The LandTrust website([www.landtrustcnc.org](http://www.landtrustcnc.org)), and invitations to the event will be mailed in early April. We hope to see you there for this one of a kind event!

## LandTrust Opens Second Creek to Canoers and Kayakers



Second Creek is one of the main waterways in Rowan County. Now canoers and kayakers can enjoy the stretch of Second Creek from the U.S. Highway 601 Bridge to the confluence with the South Yadkin River, thanks to The Woodson Foundation, The LandTrust, and the encouragement of paddler Jeff Morris.

On the weekend of November 22<sup>nd</sup> a private contractor hired by The LandTrust cleared major brush and debris from this stretch of the creek, which borders the Alcoa Gamelands. The project opens about a 1.3 mile stretch of Second Creek to public recreation. This marks the first phase in what we hope will be a multi-phase project, making Second Creek navigable from U.S. Highway 70 to the South Yadkin, a distance of over seven miles.

“The LandTrust is committed to providing public recreation opportunities to the people of our region,” says Jason Walser, executive director. “The ‘Second Creek Clean-up’ is the latest in a series of projects, including Dunn’s Mountain Park and the Eagle Point Nature Preserve, in which The LandTrust has played a key role in opening some of our region’s best natural areas to the people of central North Carolina. And because this project was made possible by the assistance of a private donor, it demonstrates the tremendous impact any single person can have in preserving and promoting our natural resources when teamed with the resources of The LandTrust.” Anyone interested in financial support of this project is invited to contact The LandTrust at 704-647-0302.

# Thanks To Our Supporters!

Your donations will allow us to continue "Saving the Places You Love" in the Piedmont Region. The following are **new** or renewing members from **January 1, 2008** through **March 10, 2008**. Every effort has been made to ensure that these names are correct. Should there be an error, or if you have questions or comments, please contact us at (704) 647-0302. Thanks for supporting The LandTrust!

## **Heartland 100 (Golden Oak)** **\$5,000 and up**

Mr. R. Jeep Bryant  
Dr. and Mrs. Charles F. Floyd  
Ms. Amy Grissom  
The Mary Shaw Love May Family Foundation  
The Estate of Dorothy Dial Nicholson  
The Estate of Lucille Proctor Norvell  
Mr. and Mrs. Mark C. Ritchie  
Mr. and Mrs. Fred Stanback Jr.  
Mr. and Mrs. William C. Stanback  
The Margaret C. Woodson Foundation

## **Heartland 100 (Maple)** **\$2,500 - \$4,999**

Mr. and Mrs. Edward Henry Clement  
Mr. Peter W. Hairston  
Locust Lumber Company Inc.  
**Mr. Rednecheck**  
G. W. Smith Lumber Company  
Walser Technology Group  
Mary and Elliott Wood Foundation

## **Heartland 100 (Dogwood)** **\$1,000 - \$2,499**

Mr. and Mrs. Andrew James Abramson  
Ms. Frances Cannon  
Mr. and Mrs. Ronald E. Chaney  
Mr. and Mrs. Larry Cloninger  
Community One Bank  
Mr. and Mrs. Robert L. Cook Jr.  
Mr. Robert L. Cook Jr.  
Mr. and Mrs. Darryl Keith Corriher  
Mr. and Mrs. John J. Davis  
F&M Bank  
The Fisher Companies  
Dr. and Mrs. Keith Gatlin  
Global Contact Services  
Ms. Ruth Ann Grissom and Dr. Marcus Plescia  
Mr. and Mrs. Robert G. Hazen  
Dr. and Mrs. Walter B. Holland  
Mr. and Mrs. Gordon Pannill Hurley  
Mr. and Mrs. James Franklin Hurley III  
Ketner and Dees, Attorneys  
**The Glenn E. and Addie G. Ketner Family Foundation**  
Mr. and Mrs. John Harris Morrison, Jr.  
Mrs. Vivian R. Penry  
Piedmont Natural Gas Foundation  
Power Curbers, Inc.  
Reamer's Equisport

Mr. Bruce Rufty  
Shaver Wood Products  
Silver Eagle, LLC  
Mr. and Mrs. Ernest Hayes Smith  
Mr. and Mrs. Tom E. Smith  
Mr. Bradford G. Stanback and Ms. Shelli Lodge-Stanback  
Statewide Title Inc.  
Taylor Clay Products Inc.  
Uwharrie Mountain Run  
Wallace Realty Company  
Ms. Sue Carter Walser  
Mr. and Mrs. Mike Walter  
Mr. and Mrs. James G. Whitton  
Woodson Sayers Lawther Short Parrott Walker & Abramson

## **\$500 - \$999 (Benefactor)**

Anonymous  
Bank of North Carolina  
Mr. and Mrs. John Bates  
Mr. and Mrs. Ronald Bryant  
Busby and Webb, Orthodontics  
Central Park NC  
Mr. and Mrs. Addison Davis  
First1Bank  
Mr. and Mrs. Chalmers L. Glenn  
Mr. and Mrs. Sanders Emerson Goodman  
Mr. Glenn E. Hudson and Dr. Jennifer G. Hudson  
Mr. and Mrs. John Lipscomb  
Mr. and Mrs. James R. Mauney  
National Starch and Chemical  
Paws in the Park  
Mr. and Mrs. John McCrary Parrott  
Mr. and Mrs. Robert S. Segal  
Mr. Bobby C. Sheets  
Dr. Mark T. Stanback and Ms. Nancy Popkin  
Mr. and Mrs. Terrell E. Stevens  
SunTrust Bank  
Mrs. Edward Tennent Taylor  
Mr. and Mrs. Harrison H. Thurston  
Colonel and Mrs. Ray-Kent Troutman  
Mr. and Mrs. Jason A. Walser  
Ms. Lydia Williams

## **\$250 - \$499 (Patron)**

Dr. and Mrs. Norman Hurst Bertels  
Dr. and Mrs. Robert Bertram  
Mr. and Mrs. Steve Blount  
Mrs. Charles E. Brady  
**Ms. Jane Braswell and Mr. Frank Skinner**  
**Mr. and Mrs. Gil Burnette**

C. S. Bradshaw Construction Company  
Mr. and Mrs. David S. Clay  
Mr. and Mrs. Donald Clement III  
Cline's Landscaping & Lawncare  
Honorable Lorene Coates  
Mr. and Mrs. C. B. Crook, Jr.  
Davidson Surveying and Mapping PC  
Mr. and Mrs. Samuel F. Davis Jr.  
Mr. Nereus C. English III  
Mr. and Mrs. N. J. Errante  
Mr. and Mrs. Luke C. Fisher  
Dr. and Mrs. Charles F. Floyd  
Dr. and Mrs. Robert Glassgow  
Mr. and Mrs. Cress E. Goodnight III

## **Grace Lutheran Church**

Dr. and Mrs. Dennis L. Hill  
Iredell County Farm Bureau  
Mr. and Mrs. Phillip J. Juneau  
Sarah C. Kellogg  
Lazy 5 Veterinary Clinic  
Dr. Deborah M. Lucas and Mr. Richard Lewis  
Ms. Ruth L. Meade  
Mrs. John Harris Morrison  
**Ms. Kristopher Pickler**  
Mr. and Mrs. William Pitt  
Mr. and Mrs. William P. Pope  
Mr. and Mrs. Robert E. Pruehsner  
Mr. and Mrs. John G. Riley  
Ramsay Burgin Smith, Architects  
Mr. and Mrs. Bruce A. Sanborn  
Mr. and Mrs. Barry Victor Shive  
Mr. and Mrs. David Simmons  
Reverend George R. Slaton  
Mr. and Mrs. Edward V. Smith  
Snow Benefits Group  
Ms. Elaine Steele  
Mr. and Mrs. Dennis Testerman  
The Timberlake Foundation  
Mr. and Mrs. Kenneth Vaughn  
**Mr. and Mrs. Darryl L. Wagoner**  
Mr. and Mrs. E. William Wagoner  
Dr. and Mrs. John C. Webb  
Dr. and Mrs. Jon Welch  
**Ms. Mary L. T. Williams**

## **\$100 - \$249 (Sustaining)**

Mr. and Mrs. Milton Reid Acree  
Mr. and Mrs. Gregory Alcorn  
Mr. and Mrs. Jake F. Alexander  
Mr. Thomas A. Allison  
Mr. and Mrs. Joseph F. Antosek III  
Mr. and Mrs. Stephen M. Antosek  
Mr. and Mrs. Robert Reece Bailey  
Mr. and Mrs. Ralph L. Baker  
Mr. and Mrs. Oscar Brooks  
Barnhardt  
Mr. and Mrs. Michael Stephen Bauk



Mr. and Mrs. Clarence B. Beaver Jr.  
Honorable and Mrs. R. Marshall  
Bickett  
Mr. and Mrs. Edward Birkinshaw  
Dr. and Mrs. J. Michael Bitzer  
Dr. and Mrs. Wilbert W. Blackman  
Mr. and Mrs. Malcolm B.  
Blankenship Jr.  
**Mr. and Mrs. Shaun Brixey**  
Mr. and Mrs. Edward Addison  
Brown  
Dr. and Mrs. John H. Bumgarner  
Dr. and Mrs. David Scott Burton  
Colonel John S. Cadwallader  
Mr. and Mrs. Summersett Carter  
Mr. and Mrs. G. Boon Chesson  
Mr. and Mrs. Andrew Chmiel  
Mr. Donald Clement Jr.  
Mr. and Mrs. Willie L. Clement III  
Mr. and Mrs. Thomas Coble Jr.  
Mr. and Mrs. Raymond Durwood  
Coltrain  
Dr. and Mrs. Steven Colwell  
Mr. and Mrs. Carl Coulthard  
Mr. and Mrs. William S. Coxe  
Dr. and Mrs. John R. Crawford III  
Mr. and Mrs. John W. Dees II  
**Mr. and Mrs. Jay W. Duke**  
Mr. and Mrs. J. Michael Dunham  
Mr. and Mrs. Charles Elliott  
Mr. and Mrs. Jim Foltz  
Dr. and Mrs. Donald R. Fortner Jr.  
Mr. and Mrs. James F. Fowler  
Mr. David P. Frame  
Mr. and Mrs. Richard D. Franklin  
Mr. and Mrs. Tyler Frick  
Dr. and Mrs. Robert Gaither  
Mr. and Mrs. Tomme T. Gamewell  
Mr. and Mrs. Keith Gapen  
Mr. and Mrs. Dale E. Gentle  
Mr. Joseph N. C. Girdler  
Mr. and Mrs. George D. Glover  
Godley's Garden Shop  
Ms. Adele Marie Goodman  
Mr. and Mrs. Francis Edward  
Goodman  
Mr. and Mrs. Richard Park Goodman  
Mr. and Mrs. Cress Edward  
Goodnight Jr.  
Mr. and Mrs. William Goodnight  
Dr. and Mrs. Joel S. Goodwin  
Mr. and Mrs. James Beall Graham  
Mr. and Mrs. William Marc Graham  
Mr. and Mrs. Wilson Graham  
Mr. and Mrs. B. Alex Grenoble  
Ms. Margaret Grigg  
Mr. and Mrs. David N. Hall  
**Ms. Rachel Hamilton**  
Dr. and Mrs. James R. Hardin  
Mr. and Mrs. Joel Harper  
Mr. and Mrs. Robert W. Harris  
Mr. and Mrs. T. Burt Harris  
Mr. and Mrs. M. Thomas Hatley Jr.  
Mr. and Mrs. John Max  
Henderlite, Jr.  
Dr. and Mrs. O. Jerry Hill Jr.  
Mr. and Mrs. Owen R. Hill  
Mr. and Mrs. Paul R. Hinkle  
Mr. and Mrs. John E. Hlavacek  
Mr. Harlie J. Hoke  
Mrs. Catherine Green Holladay  
Mr. William E. Hollan Jr.  
Mr. and Mrs. Jason C. Holt  
**Mr. David W. Hoyle III**  
Ms. Jennifer Hubbard and  
Mr. Steven Cobb  
Mr. and Mrs. Joel Hubbard  
Mr. and Mrs. Richard Long  
Huffman  
Mr. and Mrs. Joseph T.  
Inglefield III  
Mr. and Mrs. William Robyn  
James  
Mr. and Mrs. Archibald Leroy  
Jarrell III  
Dr. and Mrs. Andrew Jeter  
Dr. and Mrs. Atlee Rollins  
Johnson III  
Dr. and Mrs. James C. Johnson  
Mr. and Mrs. Harley H. Jones  
Mr. and Mrs. Larry O. Jones  
Dr. and Mrs. Richard D. Jordan  
Mr. and Mrs. William K. Kepley  
Mrs. Alice Hudson Ketcham  
Mrs. Glenn Elwood Ketner Sr.  
Mr. and Mrs. George Fisher Kluttz  
**Ms. Anna Lois Knox**  
Mr. and Mrs. Robert H. Knox III  
Mr. and Mrs. Kenneth Kolkebeck  
Mr. and Mrs. Earle Koontz  
Mr. and Mrs. Marcus D. Koontz  
**Mr. Richard Lang**  
Dr. and Mrs. Raymond L. Lassiter  
Mr. and Mrs. Herbert L. Lawton  
Ms. Sarah B. Ledbetter  
Mr. and Mrs. John F. Lentz  
Dr. and Mrs. Mark Lins  
Mr. and Mrs. John F. Lipe  
Dr. and Mrs. Bobby A. Lomax  
Mr. and Mrs. Robert F. Lowe  
Mr. and Mrs. Thomas MacMillan  
Mr. and Mrs. Joseph R. McDonald  
Mr. and Mrs. Jeffrey D. Michael  
Mr. and Mrs. Clyde B. Mickle Jr.  
Mr. and Mrs. Kent Miller  
Mr. and Mrs. Peter J. Mooney  
Mr. and Mrs. Johnny C. Moore  
**Mr. and Mrs. Timothy R. Moore**  
**Mr. and Mrs. Kenneth Dale  
Nelson**  
Mrs. Edwin Overman Norvell (d)  
Mr. and Mrs. Edward Proctor  
Norvell  
Mr. and Mrs. Enoch Anthony  
Nussman  
**Ms. Alisa Palmer**  
Dr. and Mrs. Gary H. Parks  
Mr. and Mrs. Charles A. Peacock  
Mr. and Mrs. Dewey Peck  
Mr. and Mrs. John T. Peeler  
Mr. Brian Pfaff  
Dr. W. Gaston Penry Jr.  
Ms. Barbara T. Perzel  
Mr. and Mrs. Branson A. Pethel  
Mr. Eugene B. Pickler  
Mr. James S. Plant  
Mr. and Mrs. Keith A. Powlas  
Mr. and Mrs. David L. Pressly, Jr.  
Mr. and Mrs. Richard Rankin  
Reamer  
Dr. and Mrs. Richard A. Reitz  
Mr. and Mrs. Chancellor M.  
Reynolds  
Dr. and Mrs. John O. Reynolds, Jr.  
Mr. Kent Roberts  
**Mr. Roger Robbins**  
Mr. and Mrs. T. Clinton Robins  
Mr. and Mrs. Bobby L. Rusher  
Mr. John Bruce Safrit  
Mr. and Mrs. Bruce A. Sanborn  
Mr. H. Gregory Scarborough  
Mr. and Mrs. Michael Shadroui  
Mr. and Mrs. David C. Shaver  
Mr. and Mrs. Charles P. Sherrill  
Mr. and Mrs. B. Victor Shive  
Mrs. Susan G. Sides  
Mr. and Mrs. Ian Silversides  
Dr. Bethany Strong Sinnott  
Dr. and Mrs. Norman R. Sloop  
Mr. and Mrs. Dan Griffith Smith  
Mr. George E. Smith  
Dr. and Mrs. Ronald D. Smith  
Mr. and Mrs. Walter L. Smith  
Dr. and Mrs. Whitman E.  
Smith Jr.  
Mr. and Mrs. Clifford D. Sorel  
Mr. and Mrs. Maxwell K.  
Spear, Jr.  
Dr. and Mrs. Robert Gibson Steele  
Dr. and Mrs. Charles Steinman  
Mr. and Mrs. Smith Stokes  
Mr. and Mrs. Andrew Storey  
Mr. and Mrs. Ned A. Storey  
Mr. and Mrs. David W. Swaim  
Mr. and Mrs. Robert Kenneth  
Taylor  
Dr. and Mrs. Willard Ray  
Thompson Jr.  
Mr. and Mrs. Jack Thomson  
Mr. and Mrs. William Tippet  
Dr. and Mrs. Erron Towns  
Mr. and Mrs. Lloyd William  
Troxler Jr.  
Mr. and Mrs. Bill Truitt  
Mr. Chris H. Verner and  
Ms. Gail Poulton  
Wachovia Bank  
Mr. and Mrs. W. Price Wagoner II  
Ms. Virginia Wall  
Mrs. Louise Walser  
**Mr. and Mrs. R. Charles Waters**  
Dr. and Mrs. Hugh Boyd Watts  
Dr. and Mrs. William W. Webb III  
Mr. and Mrs. Paul Weisler  
Mr. and Mrs. Henry H.  
Westmoreland  
Mr. and Mrs. J. Jay Whittington  
Ms. Shelley Williamson  
Mr. and Mrs. Alfred Wilson  
Dr. Amy E. Wilson and  
Mr. Benjamin T. Ott  
Dr. and Mrs. Edwin Wilson  
**Mr. and Mrs. Thomas Eugene  
Wilson**  
Mr. and Mrs. Robert Wright  
Dr. and Mrs. Steve W. Yang  
Mr. Braxton Young

**\$50 - \$99 (Family)**

Mr. Wayne L. Abercrombie  
Mr. and Mrs. Robert L. Baker Jr.  
Mr. and Mrs. Jerry Barger  
Mr. and Mrs. Rick Barrier  
Ms. Gwen Beavans  
Mr. and Mrs. Clarence B.  
    Beaver III  
Mr. and Mrs. Kent Beck  
Mr. and Mrs. David P. Bendert  
Mr. Rex R. Boner  
Mr. and Mrs. Owen Bradford  
    Boone  
Mr. and Mrs. Nelson M. Bradshaw  
Mr. and Mrs. Benjamin H.  
    Bridges III  
The Honorable Charles E. Brown  
    and Ms. Emily Ford  
Mrs. M. E. Bullard  
Mr. and Mrs. William R. Burgin  
**Mr. Donald and Mrs. Sonya  
    Burton**  
Dr. and Mrs. Thomas Kern  
    Carlton Jr.  
Mr. and Mrs. John R. Casey  
Mr. and Mrs. Thomas C. Childress  
Mr. and Mrs. Len Clark  
**Mr. and Mrs. John M.  
    Clemens, Jr.**  
Mr. and Mrs. Kenneth Clifton  
Mr. and Mrs. Melvin Glenn Cline  
Mr. and Mrs. Wayne M. Cline  
Mr. and Mrs. Allen DuBose Cook  
Reverend Cathy A. Cook and  
    Mr. Kenneth E. Crifffield  
**Mr. David Correll**  
Mr. and Mrs. Allen K. Craven  
Mrs. Fred T. Craven  
**Mr. and Mrs. Rodney Cress**  
**Mr. and Mrs. Reginald B. Dailey**  
**Mr. and Mrs. James Radford  
    Davis**  
Mrs. Jamima P. DeMarcus  
Mr. and Mrs. Richard Gregory  
    Dunn, Jr.  
Ms. Tammy M. Dunn  
Mr. Frank Dusch  
**Ms. Barbara C. Earnhardt**  
Mr. and Mrs. Eugene F. Earnhardt  
Mr. and Mrs. J. Robert Edwards  
Ms. Digna Freirich  
Mr. and Mrs. C. Layton Getsinger  
Mr. and Mrs. Edgar W. Gettys  
Mr. and Mrs. Ezra C. Gilliam  
Mr. and Mrs. Joseph R. Godwin  
Dr. and Mrs. Myron Arthur  
    Goodman  
Mr. and Mrs. Walter Gordon  
Dr. and Mrs. Gordon A. Grant III  
Mr. and Mrs. Rhett E. Greene  
**Mr. and Mrs. William C. Grubb**  
Mr. David A. Hannah and  
    Ms. Laurie McDade  
Mr. Clyde H. Harriss Jr.  
Mr. and Mrs. Jerry R. Harviel  
Mr. and Mrs. John Highfill  
Mr. and Mrs. Robert C. Hinkle Jr.  
Mrs. Hoyle N. Holland  
Ms. Diane Dillon Hooper

Mr. John Isenhour  
Mr. and Mrs. William C. Isenhour  
Mr. and Mrs. Brian Kautz  
Mr. and Mrs. Jack S. Kepley  
Mr. and Mrs. Timothy Klaus  
**Mr. Charles Lane**  
Ms. Kimberly Lane  
Mr. and Mrs. Larry R. Layton  
Mr. and Mrs. Mark N. Lewis  
Mr. and Mrs. John G. Lewis Jr.  
Mr. Randolph Lewis and  
    Ms. Abigail Jennings  
Dr. and Mrs. Robert M. Lewis  
Dr. and Mrs. Richard V. Liles, Jr.  
Reverend and Mrs. I. Mayo Little  
Mr. and Mrs. Thomas R.  
    MacMillan  
Mr. and Mrs. Ross William  
    McCanless  
Dr. and Mrs. Richard W. Martin  
Mr. and Mrs. Tim McCree  
Mr. and Mrs. Richard J. McGuire  
Mr. and Mrs. Joseph C. Morris  
**Mr. and Mrs. Dean Michael  
    Naujoks**  
Mr. and Mrs. Harold Hastings  
    Newman III  
Dr. and Mrs. Leon B. Newman  
Mr. and Mrs. James Norman III  
**Mr. and Mrs. Douglas T.  
    Paris, Jr.**  
Mr. and Mrs. John T. Peeler  
Mr. Glenn H. Peninger Jr.  
Ms. Barbara T. Perzel  
Mr. and Mrs. Mark Braswell Perry  
**Mr. and Mrs. Andrew Pitner**  
Ms. Elizabeth Carrington Poole  
Ms. Janice Query  
Mr. and Mrs. Ray D. Raymer Jr.  
Mr. and Mrs. Ray Raymer  
Mr. and Mrs. James J. Reilly  
Mr. and Mrs. Charles E. Roe  
Mrs. Hans Roemer  
Ms. Nancy Ruppert  
Mr. and Mrs. Bobby Rusher II  
Mr. and Mrs. David E. Setzer  
Mr. and Mrs. Larry Shaw  
Mr. and Mrs. D. Wayne Shepherd  
Ms. Eleanor E. Sifford  
Mr. and Mrs. Terrence W. Sippel  
Dr. and Mrs. David N. Smith  
Dr. and Mrs. James A. Smith  
Mr. and Mrs. Ronald L. Smith  
Mr. and Mrs. Charles L. Sowers  
Mr. and Mrs. James Anderson  
    Sparks Jr.  
Mr. and Mrs. J. Michael Strother  
Mr. and Mrs. David W. Swaim  
Mr. and Mrs. Wilborn S. Swaim  
Arlene Edwards Thompson  
Mr. and Mrs. Charles R. Thurston  
Mr. and Mrs. Darryl L. Wagoner  
Dr. and Mrs. Harry G. Walker  
Dr. John E. Wear, Jr.  
Mr. and Mrs. Donald C. Webster  
Mr. and Mrs. Alfred F. Welling, Jr.  
Mr. Henry H. Westmoreland  
Reverend and Mrs. Jerry P. Wilkes  
Mr. and Mrs. Geof Wilson

Mr. and Mrs. Norde D. Wilson  
Dr. and Mrs. Robert W. Wilson

**\$35 (Individual)**

Mr. and Mrs. John G. Annas  
Mr. and Mrs. P. Collins  
    Barwick III  
Ms. Ann Coughenhour Boyd  
Mr. and Mrs. Charles S. Brummitt  
Mr. Wayne M. Cline  
Mr. Frank Dusch Jr.  
Mr. Jimmy Forrest  
Miss Lillian Heitman Gascoigne  
Ms. Martha Lou Heitman  
    Gascoigne  
Mr. and Mrs. Douglas Glasgow  
Mr. and Mrs. Charles H. Goldman  
Mr. Hoyt Hackney  
Mrs. Dolores A. Hall  
Mr. and Mrs. Wesley Hartsell  
Mr. and Mrs. John W. Helms  
Mr. and Mrs. William Hiatt  
Ms. Nancy C. Holshouser  
Ms. Bunny V. Howell  
Mr. and Mrs. Gary M. Kenny  
Mr. Kenneth B. Knight  
Mr. Maximilian Atlas Merrill  
Mr. David Mickey  
Mr. and Mrs. Paul Rush Mitchell  
Mr. and Mrs. Joe F. Morgan  
Dr. and Mrs. John B. Murphy  
Mrs. Sally G. Murphy  
**Ms. Florence B. Peck**  
Dr. and Mrs. Leon C. Peele III  
Ms. Vicki M. Poindexter  
Mrs. Doris Porter  
Mrs. Louise Johnson Price  
Miss Heather Bell Roberts  
Mr. and Mrs. Roger Leon Ross  
**Mr. H. Deal Safrit and  
    Dr. Sheila E. Brownlow**  
**Mrs. Eleanor Sandifer**  
Ms. Joan R. Scott  
**Dr. Jonathan Shaw**  
Reverend and Mrs. Banks D.  
    Shepherd  
Mr. Eric Slipp  
**Ms. Betty Bonner Steele**  
Ms. Elaine Stiller  
**Ms. Anne Wall Thomas**  
**Ms. Tracy Tripp**  
**Mr. Jim Tucker**  
Mrs. Robert Randolph Turner III  
Ms. Louise R. Walser  
**Mr. and Mrs. E. Stephen Watson**  
Dr. Martha Kirkland West  
Ms. Jean M. Wurster  
Ms. Jewel W. Ziprik

**\$25-\$35**  
Mr. and Mrs. Mark Stuart Alley  
Mr. and Mrs. Benjamin T. Beaver  
Mrs. Ruby M. Beeker  
Mr. and Mrs. Harold W. Buchanan  
Mr. and Mrs. Ross W. Mayes  
Mr. and Mrs. William L. Noel III  
Ms. Vicki M. Poindexter  
Mr. Harley R. Smith  
Mr. and Mrs. Charles R. Thurston  
Dr. and Mrs. Harry G. Walker



### **Stewardship**

Ms. Allison Clark  
Mr. David Clark  
Mr. Walter Clark  
Cochran Estates  
**Mr. Keith Gatlin**  
Mr. Ezra Gilliam  
Mr. James Gray  
Mr. John Holton  
Ms. Caroline Clark Morrison  
Ms. Carla R. Pense

### **Honorariums**

*IN HONOR OF SUE WALSER*  
by Ms. Kathryn Conrad  
Mr. and Mrs. Ned A.  
Storey  
Ms. Sarah G. Borders

*IN HONOR OF WAYNE COOK  
AND PAIGE HELMS*  
by Reverend Cathy A.  
Cook and Mr. Kenneth  
E. Criffield

*IN HONOR OF JAMES GILMAN*  
by Mr. Paul Garrick

*IN HONOR OF JASON A.  
WALSER*  
by John Knox Chapter,  
DAR,  
Lake Badin Associates

*IN HONOR OF BARBARA  
LAWTHER*  
by Lexington Women's  
Club

*IN HONOR OF THE ANDREW  
ABRAMSON FAMILY*  
by Mr. and Mrs. Brad  
Walser

*IN HONOR OF COOLEEMEE  
PLANTATION*  
by Ms. Lydia Williams

*IN HONOR OF MR. AND MRS.  
GERALD C. BROOMSTEAD  
MR. AND MRS. ROBERT W.  
STAMEY  
MR. AND MRS. DAVID L.  
PRESSLY, JR.  
HONORABLE AND MRS.  
ROBERT A. COLLIER, JR.  
MR. AND MRS. ROBERT O.  
EBERT  
MS. REBECCA G. KIRKMAN  
MS. SARAH G. BORDERS  
MR. AND MRS. ROBERT L.  
COOK, JR.  
MR. AND MRS. NED ALTON  
STOREY  
MR. AND MRS. LAYTON  
GETSINGER  
MS. ELAINE STEELE*  
by Ms. Sue Carter Walser

### **Memorials**

*IN MEMORY OF LUCIUS PERRY  
BELL III*

Annette Bell Roberts

*IN MEMORY OF MARTHA  
HUGHES DUSCH*

Mr. Frank A. Dusch

*IN MEMORY OF PETER WILSON  
HAIRSTON*

Ms. Betty Hairston

*IN MEMORY OF DR. CULLEN  
HALL*

Ms. Catherine Hall

*IN MEMORY OF ALLENE  
HAMILTON, ELIZABETH  
SCHOFIELD,  
SARAH HARMON, DANNY  
MCQUEEN AND JACK  
EDWARDS*

Mr. Jim Tucker

*IN MEMORY OF OSCAR AND  
RUBY HELMS*

Mr. and Mrs. Mark Helms

*IN MEMORY OF ANDREW R. HILL*  
Mr. and Mrs. Owen R. Hill

*IN MEMORY OF HOYLE  
HOLLAND*

Mrs. Hoyle M. Holland

*IN MEMORY OF GLENN  
ELWOOD KETNER, SR.*

Mrs. Glenn Elwood  
Ketner, Sr.

*IN MEMORY OF D.C. AND FRAN-  
CES LINN*

Mr. Peter W. Hairston  
Mr. and Mrs. Charles  
Peacock

*IN MEMORY OF WILLIS "BUD"  
SHELLHORN*

Ms. Rosa Boyd  
Mr. Joe Blake  
Mrs. M. E. Bullard  
Mr. Floyd Burton  
Mr. David Cort  
Ms. Alana Ducker  
Mr. James Freeman, Dr.  
and Mrs. Donald Fortner  
Mr. and Mrs. Tomme T.  
Gamewell  
Mr. and Mrs. George D.  
Glover  
Godley's Garden Center  
Mr. and Mrs. John Van  
Hanford, Jr.  
Mr. and Mrs. Robert W.  
Harris  
Mr. and Mrs. Ronald E.  
Owen  
Mr. and Mrs. Arthur W.  
Pinkston  
Mr. and Mrs. John William  
Roderick

Rowan Diagnostic Clinic  
Rowan Regional Medical  
Center  
Dr. Ranjan Roy  
St. John's Lutheran Church  
Dr. and Mrs. Charles  
Steinman  
Mr. and Mrs. Terry M.  
Swaim  
Mr. and Mrs. Russell  
Vaughn  
Mr. and Mrs. Jason A.  
Walser

*IN MEMORY OF DR. AIDAN  
SINNOTT*

Dr. Bethany Strong  
Sinnott

*IN MEMORY OF NEAL SMITH  
AND HANK PALMER*  
Mr. Hall Steele

*IN MEMORY OF VIRGINIA HOLT  
SPAKE*

Mr. Angelo P. Capparella

*IN MEMORY OF ELWOOD  
SUTTER*

Colonel and Mrs. Ray-  
Kent Troutman

*IN MEMORY OF BILL WALKER*  
Sue Carter Walser

*IN MEMORY OF ALBERT F.  
WALSER*

Mr. John L. Petrie and  
Ms. Anna Rufty-Petrie  
Mr. and Mrs. Ned A.  
Storey

*IN MEMORY OF ALFRED F.  
WELLING, JR.*

Mr. and Mrs. Wayne  
Brooks  
Mr. and Mrs. W.  
Leighton Carmichael  
Ms. M. Frances Crowell  
Design Research Group  
P.A.  
Dr. and Mrs. Charles R.  
Fernandez  
Mr. and Mrs. Paul M.  
Griffith  
Dr. Matt Gromet  
Mr. and Mrs. Lester K.  
Howard  
Ms. Hilda W. Lee  
Mr. and Mrs. Joe T.  
Millsaps  
Mr. Thomas Phillips  
Mr. and Mrs. George  
Stilwell  
Mr. and Mrs. William  
Vandiver  
Ms. Jackie Walsh  
Ms. Delores B. Welling  
Ms. Dorothy S. Welling  
Ms. Elizabeth Wilson

## Conservation Connection— “A True Landscape Artist”

When most people look at the clear-cut adjacent to my driveway, they don't exactly see possibility. But that's precisely what I do see when I look at it. This area presents itself as a blank canvas – a chance to create.

While artists use a literal canvas and paintbrushes, the art of landscape design requires tools of a different kind. Prescribed fire is my paintbrush. A bushhog and trackhoe are my artist's implements. Although these tools may leave the landscape black and destitute initially, the end result of restoration efforts will be scenery beautiful beyond measure, literally alive with wildlife and vegetation, and figuratively with color and depth.

The piedmont prairie that is being restored by these artistic efforts will house native grasses and wildflowers. Purples and oranges and yellows of unique blooms – Indian paintbrush, Georgia aster, and sunflowers will grace the restored landscape. The tufts of little and big blue stem grasses, and Indian grass gently stirred by the wind. And the animals that inhabit this restored landscape bring their own beauty



*A friendly visitor in the front yard.*

and charm - the ornate woodducks that nest on the created ponds, the speckled quail in the prairie, and the strutting turkeys in the forest. I watch marbled and spotted salamanders live out their life cycles in the ephemeral wetland areas. The intricacies of these ecosystems on both a small and large scale, as they make their transition from disturbed to restored, reveals that beauty truly is in the eye of the beholder. And for the plants and wildlife who utilize these areas, even transition itself has a splendor of its own.

*-Mark Lewis, volunteer/easement donor, as told to & written up by LandTrust staff.*



*One picturesque glimpse of the diversity of ecosystems found on the property, which includes riparian areas, mature hardwood forests, wetlands, ponds, prairies, and more.*



# Board Member Profile

## *Edward Norvell*

Conservationist, preservationist, philanthropist, fund-raiser, planner, author—these are just a few of the words that describe Edward P. Norvell. Here at The LandTrust we just call him when we need him, which is often. Edward rejoined our Board in 2008 after taking a sabbatical due to other commitments. After a term as vice president, he now chairs our Land Protection Committee, which reviews potential land conservation projects for recommendation to the Board.

Many in Salisbury and Rowan County know Edward for his civic and charitable contributions, including key board positions with the Historic Salisbury Foundation, Rowan Museum, and Downtown Salisbury, Inc. He also has been a leading fundraiser for the Meroney Theater, Rowan Museum, J.F. Hurley Family YMCA and many other groups in Rowan County. What people may not know about Edward is that he is widely considered to be one of the foremost legal experts on land conservation in the state, having served as legal counsel with the Conservation Trust for North Carolina. Currently he



is working as a legal consultant for the Clean Water Management Trust Fund. Many moons ago, he was also director of land protection with The LandTrust for Central North Carolina.

Edward and his wife, Susan, live in Salisbury and spend time on Ocracoke Island during the summer. They have two children, Phillip and Mary Linn. In his spare time, Edward loves to write and is the author of three published novels—*Southport*, *Portsmouth* and *Shadows*—as well as many short stories.

# Thanks and Farewell to Michele!

Michele d'Hemecourt joined on with The LandTrust in late summer of 2005, and left us this past November headed across the country. All the way across the country, to Port Angeles, Washington! In addition to spending time hiking and running in the beautiful landscape there, Michele operates the Port Angeles Farmers' Market for Clallam County, and she also works on salmon habitat restoration projects. While at The LandTrust, Michele worked predominantly on land protection projects, working with local landowners on conservation opportunities. Some of her most notably projects include several phases of protection of the Adams Farm in Rowan and Iredell Counties, the Billy Joe Kepley Farm in Davie County, and the last project before she left, the protection of the Gilliam Farm in Rowan County.

In 2004 and 2005, Michele worked in Western Colorado for one of the first agricultural land trusts in the country. Michele's dog Lucy was also a frequent attendee of LandTrust hikes and events. We are grateful to Michele for all the hard work and service, and wish her all the best on her new adventure!



*Thanks to Michele from all of us here at The LandTrust!*



*Heartland members take in the scenery at Low Water Bridge.*



*Beautiful fall foliage at Tuckertown.*



*Santa Claus stopped by for The LandTrust's annual tree trimming event!*

## THE LANDTRUST FOR CENTRAL NORTH CAROLINA

The LandTrust is a private, nonprofit organization working with private and public landowners to protect the special natural areas, family farms and rural landscapes of Anson, Cabarrus, Davidson, Davie, Iredell, Montgomery, Randolph, Richmond, Rowan and Stanly Counties. With 501 (c) (3) status, all donations to The LandTrust qualify for maximum tax deductions.

### BOARD OF DIRECTORS

Dan Williams, President  
Dyke Messinger, Vice President  
David Simmons, Treasurer  
Moni Bates  
Darryl Corriher  
Lindsey Dunevant  
Amy Grissom  
John Hart  
Bill Medlin  
Jeff Michael  
Joe Morris  
Peg Knox Morrison  
Edward Norvell  
John Peeler

### BOARD OF ADVISORS

Joe Adams  
Raymond D. Coltrain  
J. Myrick Howard  
John Lentz  
Joseph McDonald  
David Springer  
Alice Stanback  
Fred Stanback  
William C. Stanback  
Charles E. Roe  
Roberts E. Timberlake

### STAFF

Jason A. Walser, *Executive Director*  
Andrew Waters, *Operations Director*  
Barbara Martin Lawther, *Development Director*  
Crystal Cockman, *Uwharrie Conservation Specialist*



*To protect and preserve the land—natural areas, rural landscapes, family farms and historic places within North Carolina's heartland.*

P.O. Box 4284  
Salisbury, NC 28145  
704-647-0302

Non-Profit Org.  
U.S. Postage  
**PAID**  
Salisbury, NC  
Permit No. 111