



THE LANDMARK

WINTER 2008



Check out some stunning landscape shots of our beautiful Piedmont region in this edition of The LandMark!

Inside this issue:

- The Puzzle Fits Together
- 2007 LP Accomplishments
- Land Protection Projects
- Previous Outings & Events
- Upcoming Excursions & Events
- Thanks to Our Supporters!
- Stewardship Update
- Volunteer & Board Member Profiles

THE PUZZLE FITS TOGETHER



**Andrew Waters,
Operations Director**

My three-year-old likes to put together puzzles. Dinosaurs are his preference, although a John Deere tractor has become a recent favorite. He's gotten pretty good, too, even if he relies on me to piece together the borders so he can focus on the middle—the interesting part where all those Tyrannosaurs and farm vehicles reside.

The LandTrust might be said to resemble a puzzle, and even though this newsletter emphasizes the land we've conserved—over 1,740 acres this year—the land only provides the border. The interesting part, the middle, is the people.

I'm in charge of two committees at The LandTrust, stewardship and finance, and never has a spacey English major been more out of his element. Our finance committee is made up of people like Dan Williams and Dyke Messinger, pillars of the Salisbury business community. It's always an adventure explaining The LandTrust's screwball finances,

which often involve funding from state and federal grant funds, as well as private sources, to finance multi-year, multi-part land transactions with narratives more complex than a Dickens novel, to such astute financial minds. I'm amazed, however, by the patience and kindness with which these busy and important men endure these ramblings, and the keen insight they provide in keeping our finances on track.

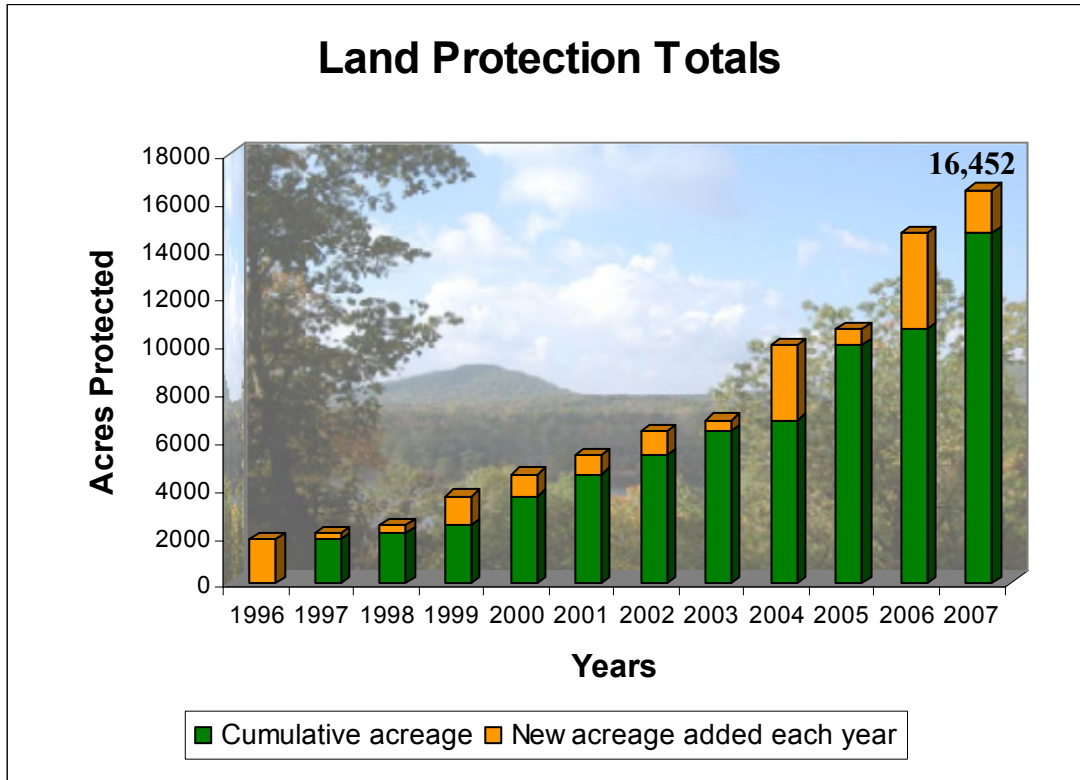
If the finance committee can be mystifying, the stewardship committee is, for me, another universe. Here is where we discuss and plan for issues like wildlife habitat enhancement, farm leases, and invasive species. I can barely say *Lespedeza*, let alone recognize it, but luckily we have folks like John Isenhour to help me out. John works for the NC Wildlife Resources Commission is just one of the extremely knowledgeable conservationists and land managers who serve on this committee and help us steward and enhance the land and natural resources in which we've been entrusted.

In fact, work at the LandTrust can often seem like one long committee meeting, but how else could I get to know fantastic women like Meredith Sullivan and Kelly Goodman. Meredith oversees all LandTrust events as Special Events Coordinator, and Kelly served as Chair of the RiverDance 2007 Committee. Both recently became new mothers and both obviously have plenty to fill up their time, but both showed up at our office a few Fridays ago to plan ways to make this year's Riverdance—mark your calendars for Saturday, August 9th!—better than ever.

Then there's Dennis Testerman, the most recent addition to our Priority Lands Committee, which reviews potential conservation easement donations and land acquisitions. There's a pretty steep learning curve on this committee, where lingo like “conservation value,” “tax benefits,” “buffer,” and “building envelopes” gets thrown around without much explanation. But Dennis, the soil and water conservation district officer for Cabarrus County and a longtime LandTrust supporter, has jumped right in, offering his own unique and thoughtful insight into these potential projects.

And that's not even mentioning the people who come through our doors on a regular basis. Folks like Dave Davis, Jack and Maria Thomson, Jim Foltz, Bruton Allen, Linda Errante, Boon Chesson, Bob Pendergrass, John Hart, Brent and Wanda Parks, Kurt Cribb, Jill Fisher, Laura Fogo, Mark Lewis and many, many more, all of whom create the rich, colorful mosaic that makes The LandTrust the most successful kind of jigsaw puzzle, the kind that stimulates and, ultimately, rewards. Thanks to them, and you, for supporting The LandTrust—you all fit right in.

Land Protection Update - Over 1,740 Acres Conserved in 2007!



The LandTrust for Central NC has been working hard again this year at “Saving the Places You Love” in our Piedmont Region. This edition of *The LandMark* highlights some of the great properties that were protected in 2007. As you peruse this newsletter, you’ll see that these protected properties vary from farmland protection to riparian and wetlands preservation to open space conservation and more, with each project unique in background and purpose. Thanks to dedicated landowners and supporters, The LandTrust saw its land protection totals in the year 2007 rise above not only 15,000 acres, but even 16,000 plus.

However, the land protection totals do not by themselves tell the whole story, as for each project completed, there are several dozens more in various stages. A surprising number of these projects are a result of landowner contacts from previous easement donors; some are surrounding landowners; and even a few are past easement donors themselves who want to conserve even more of their beautiful property in this region. And although some of these great projects may not see comple-

tion for years to come, the fact that existing projects roll into other projects, and that most of the properties we protect come from landowners who *seek us out*, is truly a tribute to the importance that you all place on the conservation of our beautiful Piedmont region.

For that and so much more, we’d like to say thank you. Thanks to the landowners who so willingly preserve their beautiful landscapes for future generations to enjoy. Thanks to our board and committee members who help us make these important conservation decisions. Thanks to our volunteers who assist us in the office and the field and allow us the ability to complete tasks like stewardship and management that our staff could not do alone. Thanks to our conservation partners who work with us in our efforts to conserve these wonderful properties in a strategic and efficient manner. And thanks to our supporters and members who allow us the opportunity to work with these great landowners in what we consider the greatest job on earth. Thanks for letting us be *your* land trust!

Third Phase of Adams Farm Conservation Efforts

Following up on his second donation last year, Dr. Richard Adams has now completed his third conservation easement donation to The LandTrust! This most recent easement protects 300 acres, with portions of the property located in both Iredell and Rowan Counties.

Located off Cool Springs Road, a portion of this year's donation possesses stream footage on the South Yadkin River, which has been identified as important for drinking water supplies, migratory wildlife, public recreation, and also for Native American history.



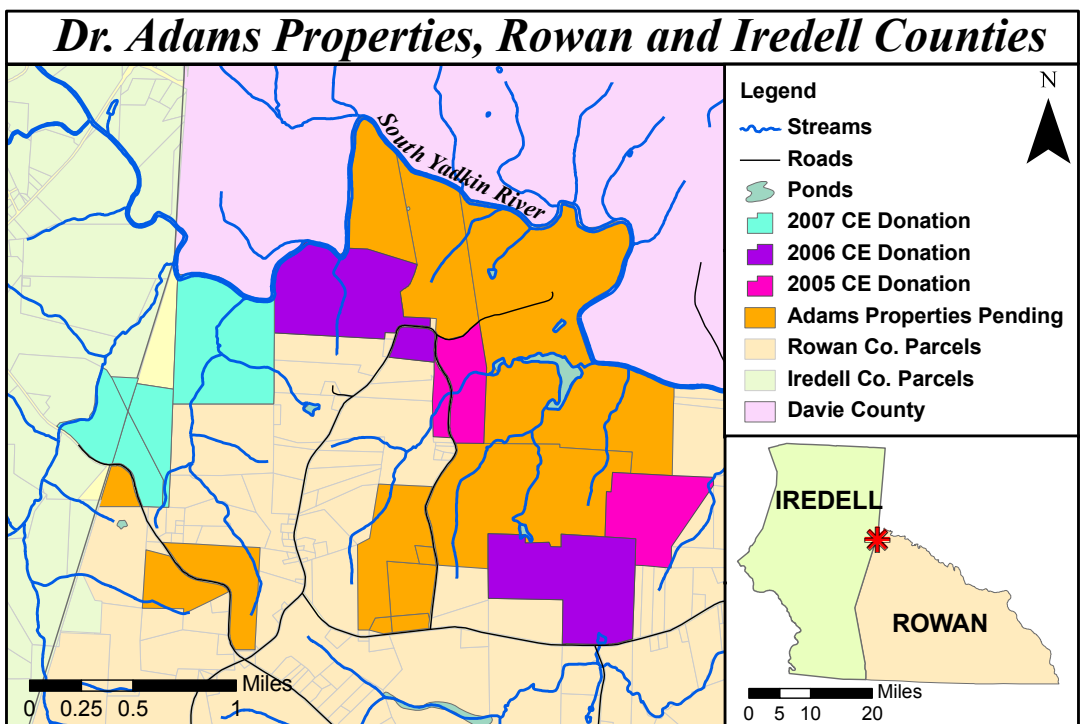
A serene tributary located on one of Dr. Adams protected properties.



Prime agricultural soils can be found on the newly conserved property.

This most recent donation brings the total acreage Dr. Adams has protected to an amazing 831 acres, including a state significant natural heritage site, a Piedmont/Coastal Plain Heath Bluff identified as the South Yadkin River Heath Bluff in the Rowan County Natural Heritage Inventory.

Dr. Adams hopes to donate conservation easements on even more of his wonderful properties in the future. These will compliment these previous donations and conserve a wonderful large-scale habitat for wildlife for generations to come.

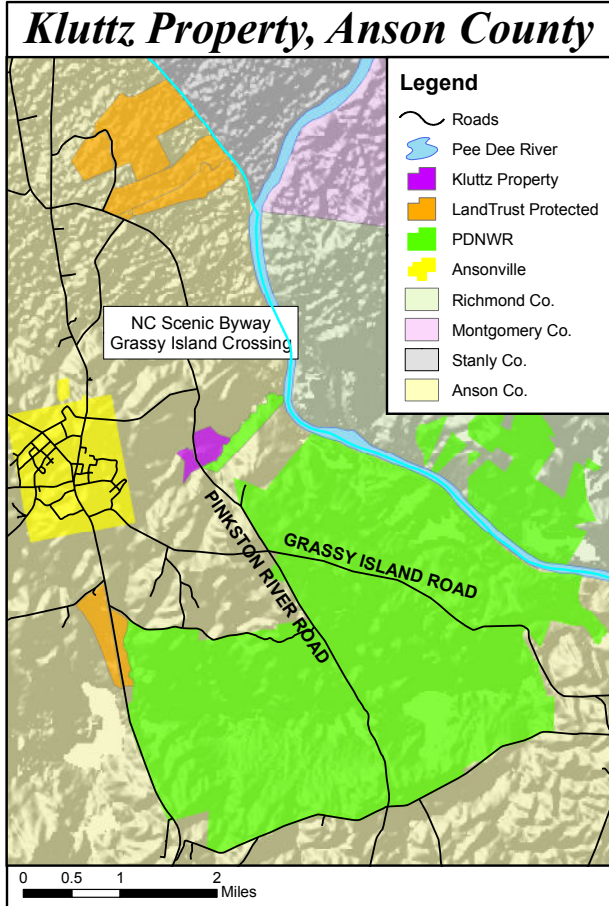


Kluttz Property Conserved in Anson County

At a stop on the NC Scenic Byway of Grassy Island Crossing off Pinkston River Road, the canopy suddenly opens up a few hundred feet into the dense green wilderness. You find yourself in front of an immense wetland, with screeching great blue herons (in no small way) letting you know you've invaded their turf. But they are not the only occupants of this watery paradise, as frogs chime in with the chorus. A flock of wood ducks, not to be outdone, join in as well with their drum-like wingbeats.

This wonderful property, located immediately adjacent to the Pee Dee National Wildlife Refuge in Anson County, was placed under permanent conservation easement this year by Bob Kluttz and his mother, Nancy. The superb wetland, complete with a diversity of waterfowl and flora, such as the beautiful water lilies pictured, is found off Pressely Creek, which forms the southern boundary of this property.

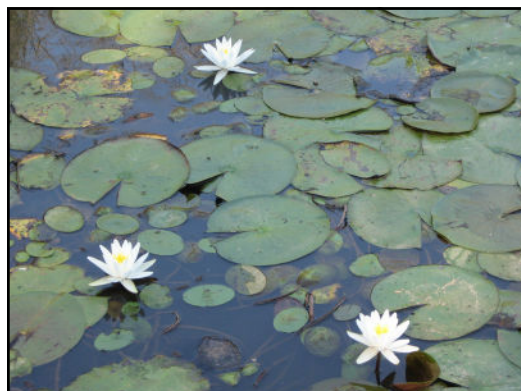
But the wetland is not the only significant feature of this great place. Down one pathway from the wetland, you'll find a canopy of large pines and a unique cardboard box in the top of one of these. Bob explains that this is used to entice swarming bee hives, as you saunter on down the lane to find five hives, bees eagerly buzzing around them. Although becoming a lost art, beekeeping is not only a fun and tasty hobby, for large-scale pollination it is pivotal to the agricultural lands on which we all depend.



Across the scenic byway, a stand of hardwoods also contributes to the beauty and natural character of the property. The protection of this 90-acre refuge is a perfect compliment to the migratory waterfowl that utilize the adjacent refuge, and the landowners' willingness to preserve this great property ensures that another portion of what makes Anson County so unique is now protected in perpetuity.



This huge wetland is home to a plethora of waterfowl, reptiles and amphibians.



Water lilies on the newly protected Kluttz Property in Anson County.

Pence Property in Rowan County Conserved

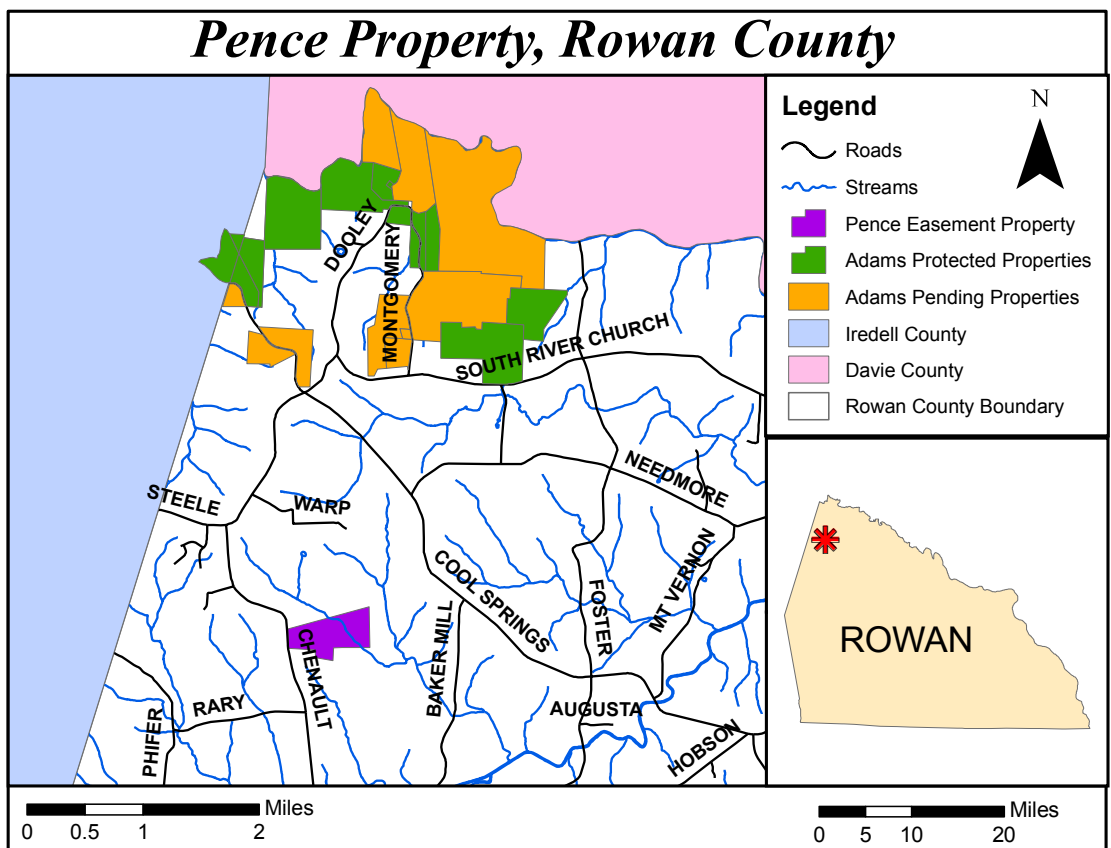
A section of the beautiful rolling farmland and hardwood forest in northwestern Rowan County was permanently conserved in December thanks to a conservation easement donation by Carla and Eric Pence. Eric, a full-time farmer, and Carla, a physician practicing in Statesville, donated a permanent conservation easement on a 126-acre tract near Chenault Road just north of Cleveland. Aside from protecting a scenic viewshed, the donation also protects prime agricultural soils; wildlife habitat for turkey, deer, and other small game; and over 2,200 feet of vegetated frontage along a perennial tributary to Fourth Creek.

“We are extremely excited to work with the Pences on the conservation of a portion of their farm,” says Andrew Waters, The LandTrust’s Operations Director who worked with the family on their conservation easement donation. “In addition to the conservation values of the tract itself, this easement donation was made in a part of Rowan County where there are



A beautiful sunset over the newly protected Pence Property in Rowan County.

several other conserved properties, making it an important and emerging project area for The LandTrust.” Other conservation properties nearby in northwestern Rowan County include the 248-acre Brown Farm conservation easement, the 35-acre Berger Third Creek tract, and the Adams Farm project, now totaling almost 831 acres.

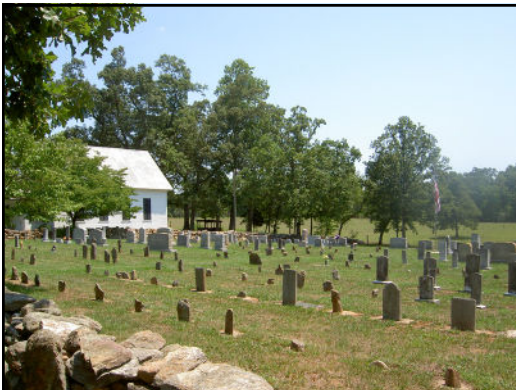


Troutman Property Conserved in Iredell County

The Troutman community in Iredell County is growing rapidly thanks to development from Lake Norman and Statesville, but those traveling on Troutman Farm Road alongside the historic Troutman Family Cemetery will forever be able to enjoy the scenic vistas made possible by an 80.28 acre conservation easement by Ray Kent and Jo Ann Troutman. The easement protects significant frontage on Powder Spring Branch, a perennial stream that crosses into Lake Norman State Park. The LandTrust has been working with the Troutman family



Powder Creek on the Troutman Property



Historic Troutman Family Cemetery.

for several years to complete this donation and hopes to make this the cornerstone of a much larger project area. Several other landowners in the area have expressed interest in conservation easement donations, notes Jason Walser, executive director of the LandTrust and an Iredell County native. “I feel a special connection to Iredell County and look forward to future easements in Troutman,” says Walser. “Our thanks to the Troutman family for leading land conservation efforts in this community.”

Gatlin Property Preserved in Iredell County

The 107-acre Gatlin conservation easement, donated by Keith and Lisa Gatlin, may be in eastern Iredell County, but its proximity to several Rowan County conservation easements, including the Adams and Pence easements highlighted in this newsletter, make it a significant addition to what is emerging as an important conservation corridor in northwest Rowan County and eastern Iredell County.

LandTrust staff worked with the Gatlin family for over two years to complete this project. The conservation values of this



Pastoral views on the Gatlin Property.

Continued on page 8...

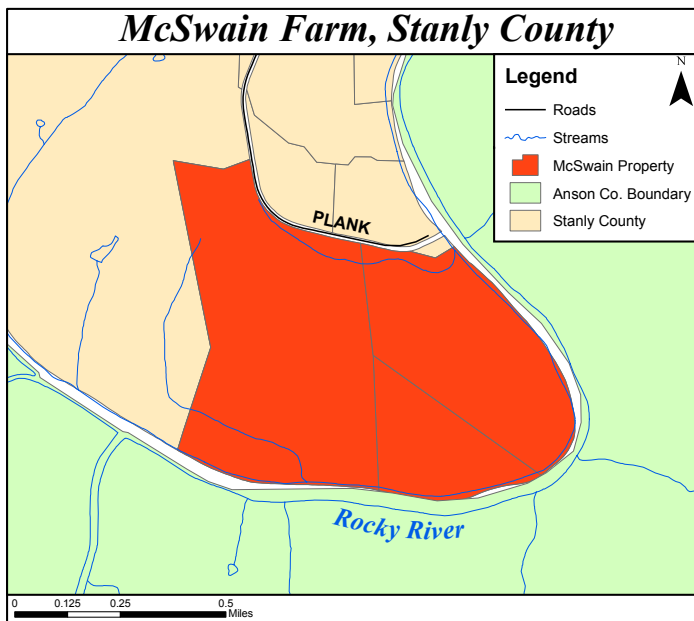
McSwain Farm Protected in Stanly County

The rolling hills of pasture and cropland might well be the most defining characteristic of Stanly County in the minds of LandTrust supporters. Thanks to Barry and Angela McSwain, 320 acres of this fabulous farming character is permanently protected by a conservation easement.

This property epitomizes the popular phrase of “No Farms, No Food.” With a rotation including corn and soybeans, this property is a remaining part of North Carolina’s breadbasket. Managing a farm requires a great deal of skill and experience, particularly when faced with unex-



Rolling agricultural landscape of the farm.



pected weather conditions such as this year’s drought. As many acres of farmland are lost each year in North Carolina, few realize the true importance of and work that goes into keeping our state’s farms viable and in production. For this we should all be appreciative to our farmers, particularly those as dedicated as the McSwains.

The donation of this easement marks the largest individual property under conservation easement in Stanly County, and one of the largest easements in The LandTrust’s history.

Gatlin Article Continued...

easement donation are diverse, as it preserves open space, farmland, hardwood forests, wildlife habitat, and scenic vistas from West Page Hager Road.

The donation, made in late December 2007, brings the total land protected by The LandTrust in Iredell County to just over 2,100 acres. Preserving properties that are adjacent to other conservation lands is an efficient and effective way to conserve large-scale habitat many species rely upon. The LandTrust is fortunate to have so much interest in conservation within this important corridor.



Lush green fields located on the property.

The LandTrust Partners to Protect Lincoln County Property

Although Lincoln County is not within our regular service area, The LandTrust for Central North Carolina played a key role in protecting an important conservation and recreational resource in the eastern portion of that county in late 2007.

In December The LandTrust accepted an 85-acre conservation easement donation on a tract adjacent to a YMCA facility under construction near the new U.S. Highway 16 corridor. The easement will protect a buffer of over 4,000 linear feet on Forney's Creek and includes over 40 acres of floodplain. Known as Sally's Y in honor of Sally Clark, a young woman who tragically lost her life in an automobile accident with a drunk driver, the YMCA facility also will utilize the conserved area for low impact recreational and conservation education programming.

The LandTrust partnered with Catawba Lands Conservancy, who received the underlying fee title to the property from the

donors, to complete this project. "By donating the conservation easement to one land trust, and the fee title to another, the donors better insure the permanent conservation of the property," says Jason Walser, executive director of The LandTrust. Walser explained this is a common arrangement between land trusts when a donor wants to donate both a conservation easement and the fee title for a piece of property. "We are excited about this opportunity to partner with a neighboring land trust while enhancing the protection of a wonderful conservation and recreational resource in a Piedmont North Carolina community," notes Walser.

"Once again, The LandTrust for Central NC has proven a great partner in a great conservation project," adds Dave Cable, executive director of the Catawba Lands Conservancy. "We are extremely grateful and indebted to The LandTrust for their support on this project."

Holton Farm in Randolph County Permanently Protected

If the John Holton Farm sounds familiar, there's good reason. Although he worked with The LandTrust back in 2002 to ensure the protection of his farm as a planned conservation gift, in October of this year he decided to make his conservation easement permanent. With this easement, he has forever ensured the preservation of his beautiful 244-acre farm located in the town of Trinity in Randolph County.

This property has significant historical, agricultural, and water quality resources, which all contribute to the conservation values of this easement. This property is located in a rapidly growing area, with a new high school going in across the road from the farm. The preservation of this wonderful property will be a great example to these students and the local commu-



The Holton Farm, in addition to agriculture, also has beautiful forestland.

nity. The farm will forever remain as a beautiful viewshed, a safehaven for wildlife, and a reminder of the agricultural heritage of the area.

Landscape Views of Our Beautiful Region



Uwharrie Mountains - Oldest mountain range in North America.



Falls Reservoir - Future Morrow Mountain State Park Expansion.

Saving the Places You Love in the Piedmont



A foggy morning over Badin Lake.



Tuckertown as seen from Bald Mountain.

Falconry Demonstration at Dan Nicholas Park



LandTrust friends and supporters got to meet some of nature's most majestic creatures up close and personal on November 17th at Dan Nicholas Park in eastern Rowan County.

Longtime LandTrust friend and supporter Bob Pendergrass of Rowan Wildlife

Adventures, along with fellow falconers Larry and Cynthia Dickerson, introduced a spellbound crowd to their red-tailed hawks, Cooper's hawk and peregrine falcon, and gave a fascinating presentation on the history and practice of this ancient sport.

LandTrust Hike at the 2nd Uwharrie Mountain Festival

The LandTrust led a wildflower and forest management hike again this year at the 2nd annual Uwharrie Mountain Festival. Local landowner and LandTrust volunteer Boon Chesson again graciously hosted us on his beautiful longleaf pine working forest. This landscape was the perfect exemplum of the fact that spring is not the only season with a monopoly on wildflowers, as the yellow goldenrods, purple aster, other native plants, and endangered Schweinitz's sunflowers put on quite a show under the beautiful open canopy of the longleaf.

Thanks to Boon for hosting and all those who came out both for the hike and the festival. If you missed out on the



Host Boon Chesson shows attendees historical maps of the property.

Festival this year, make sure to mark your calendars for next year! The Uwharrie Mountain Festival is held annually at Kings Mountain Point on the 2nd weekend in October. Hope to see you there!

Ornament Making at Green Goat Gallery & Greenway Tree Trimming

On Saturday, December 1st, the Green Goat Gallery in Spencer hosted approximately 50 children and adults for a Christmas tree ornament making party featuring all natural, biodegradable and edible ornaments. A special visit by that jolly old elf himself, St. Nick, topped off the party. The ornaments were put to good use on



Monday, December 3rd, at the LandTrust's Fifth Annual Tree Trimming Ceremony on the Salisbury Greenway, featuring remarks by Salisbury mayor Susan Klutz. Families from throughout the LandTrust service area came out to celebrate the gift of nature in this annual kickoff for the holiday season.

Upcoming Excursions and Events

- **Pee Dee Refuge Walk, Saturday, February 16th**
Staff from the Pee Dee National Wildlife Refuge in Anson County will graciously host us for a brief overview of the Refuge followed by a walk to see some of the thousands of ducks that use this great resource every year.
- **LandTrust Open House, March 6th**
Rescheduled from January due to inclement weather, join us on March 6th at the Salisbury office for hors d'oeuvres and time for catching up with staff and friends.
- **Birkhead Property Hike, Sunday, March 16th**
Join us for a moderate hike on our protected Birkhead Property, adjoining the 6000 acre Wilderness Area. With close to 300 acres of hardwood forests and a rare hillside seepage bog, this property is another example of what's unique about the Uwharries.
- **Yadkin River Canoe Trip, Sunday, April 20th**
The LandTrust celebrates Earth Day weekend with a Sunday afternoon canoe trip on one of our region's most significant natural resources, The Yadkin River. RSVP required, space is limited. To reserve a spot, please call Andrew at 704-647-0302.
- **Annual Meeting, Saturday, May 31st, Bull Hole "River Park," Coolemees, North Carolina**
The Bull Hole River Park on the South Yadkin River will be the site of this year's annual meeting from 11 a.m. to 1 p.m. Come enjoy this beautiful park in the heart of our "Two Rivers Preserve" and learn about The LandTrust's recent successes and the River Park. Back by popular demand: Port-a-Pit Chicken!

*To receive updated information on LandTrust events, subscribe to our electronic newsletter by sending your e-mail address to andrew@landtrustenc.org. Or check our Web site for event details and directions: www.landtrustenc.org/calendar_events.asp.

Thanks To Our Supporters!

Your donations will allow us to continue "Saving the Places You Love" in the Piedmont Region. The following are **new** or renewing members from **January 1, 2007** through **December 31, 2007**. Every effort has been made to ensure that these names are correct. Should there be an error, or if you have questions or comments, please contact us at (704) 647-0302. Thanks for supporting The LandTrust!

Heartland 100 (Longleaf Pine) **\$10,000 and up**

Ms. Amy Grissom
Estate of Dorothy Dial Nicholson
Power Curbers, Inc.
Mr. and Mrs. Fred Stanback
Mr. and Mrs. William C. Stanback
Z. Smith Reynolds Foundation

Heartland 100 (Golden Oak) **\$5,000 - \$9,999**

Carolina Master Cycling
Educational Foundation of America
Mr. and Mrs. D. Kenan Smith
Ms. Judith A. White
The Margaret C. Woodson
Foundation

Heartland 100 (Maple) **\$2,500 - \$4,999**

Anonymous
Mr. and Mrs. Edward Henry Clement
G. W. Smith Lumber Company
Locust Lumber Company
The Mary and Elliott Wood
Foundation
Mr. and Mrs. Barry E. McSwain
Mary Shaw Love May Family
Silver Eagle Distributors

Heartland 100 (Dogwood) **\$1,000 - \$2,499**

Alcoa, Inc.
Mr. and Mrs. Gregory M. Alcorn
Mr. and Mrs. Ronald Chaney
Mr. and Mrs. Larry Cloninger
Community One Bank
Mr. and Mrs. Robert L. Cook, Jr.
Mr. and Mrs. John J. Davis
F&M Bank
Goodman Millwork, Inc.
Ms. Margaret F. Grigg
Ms. Ruth Ann Grissom and
Dr. Marcus Plescia
Mr. Peter Wilson Hairston
Mr. and Mrs. Robert Hazen
Dr. and Mrs. Dennis L. Hill
Dr. and Mrs. Walter B. Holland
Mr. and Mrs. Gordon P. Hurley
Mr. and Mrs. James F. Hurley III
Mr. and Mrs. Ralph W. Ketner
Mr. and Mrs. James R. Mauney
Mr. and Mrs. Dwight F. Messinger
Mr. and Mrs. John Harris
Morrison, Jr.
Mr. and Mrs. Edward Proctor Norvell
Mrs. Vivian R. Penry
Piedmont Natural Gas Foundation
Mr. Bruce Ruffy
Mr. Bradford G. Stanback and
Ms. Shelli Lodge-Stanback
Statewide Title, Inc.
Mr. and Mrs. Harrison H. Thurston
Uwharrie Mountain Run
Wallace Realty Company
Walser Technology Group

Mr. and Mrs. Mike Walter
Mr. and Mrs. James G. Whitton
Mr. and Mrs. Dan R. Williams
Ms. Lydia Williams
Woodson Sayers Lawther Short
Parrott Walker and Abramson,
Attorneys

\$500 - \$999 (Benefactor) **A Step in Time**

Anonymous
Mr. and Mrs. John Bates
Ms. Frances Cannon
Mr. and Mrs. J. Keith Crisco
Mr. and Mrs. Robert O. Ebert
Mr. and Mrs. Chalmers Glenn
Global Contact Services
Mr. and Mrs. Sanders Emerson
Goodman
Dr. and Mrs. Louis Kandler
Mr. and Mrs. Robert F. Lowe
Mid South Tractor Company
Mr. T. Jefferson Morris
National Starch and Chemical
Company
Surge's "Paws in the Park"
Mr. and Mrs. John McCrary Parrott
Mr. and Mrs. William Pitt
Ms. Janice Query
Randolph Rifle Club
Dr. and Mrs. James M. Rhyne
Mr. and Mrs. John G. Riley
Mr. and Mrs. Robert S. Segal
Dr. Mark T. Stanback and
Ms. Nancy Popkin
Mr. and Mrs. Terrell E. Stevens
SunTrust Bank
Mrs. Edward Tennent Taylor
The Timberlake Foundation
Mr. and Mrs. C. H. Timberlake
Wachovia Bank
Mr. and Mrs. Jason Walser

\$250 - \$499 (Patron)

Mr. and Mrs. Andrew J. Abramson
Mr. and Mrs. Stephen M. Antosek
Ms. Amy Pitzer Barnhardt
Mr. and Mrs. Charles Bernheim
Mrs. Charles E. Brady
Mr. and Mrs. Kent G. Callahan
Cline's Landscaping and Lawn care
Mr. and Mrs. David A. Craver
Mr. and Mrs. Addison Davis
Mr. and Mrs. Samuel F. Davis, Jr.
Mr. and Mrs. Stan Dunham
Mr. Nereus C. English III
Mr. and Mrs. N. J. Errante
Mr. and Mrs. Larry H. Fain
Miss Lillian Heitman Gascoigne
Mr. and Mrs. Michael Goodman
Mr. and Mrs. S. Lonnie Goodman
Ms. Margaret F. Grigg
Dr. and Mrs. Arthur S. Harberts
Mr. and Mrs. Joel Shelton Harper
Mr. and Mrs. Jason C. Holt
Mr. and Mrs. Mike Jones

Mr. and Mrs. William D. Kenerly
Mr. J. Don Kepley and
Mrs. Evelyn McDade Kepley
Mr. and Mrs. Kenneth Kolkebeck
Mrs. Jeanette B. Lassiter
Mr. Carroll Leggett
Mr. and Mrs. Don Leonard
Mr. and Mrs. John F. Lipe
Literary Bookpost
Dr. Deborah Lucas and
Mr. Richard Lewis
Mrs. John Harris Morrison
Dr. and Mrs. Gary H. Parks
Mr. and Mrs. Branson Pethel
Mr. and Mrs. William B. Pitt
Mr. and Mrs. William P. Pope
Mr. Robert E. Pruehsner
Mr. and Mrs. W. Trent Ragland, Jr.
Mr. and Mrs. Richard R. Reamer
Mr. and Mrs. Kevin Redding
Mr. and Mrs. Harold Knox Roberts, Jr.
Mr. and Mrs. Scott Robinson
Mr. and Mrs. H. Franklin Sherron
Mr. and Mrs. David Simmons
Mr. and Mrs. Edward V. Smith
Mr. and Mrs. John M. Smith
Dr. and Mrs. Charles Steinman
Mr. and Mrs. Terrell E. Stevens
Mr. William K. Templeton
Mr. and Mrs. Kenneth Vaughn
Ms. Sue Carter Walser
Mrs. Louise Walser
Dr. and Mrs. Jon E. Welch
Mr. and Mrs. Scott Whittington
Mr. and Mrs. Alfred Wilson
Mr. and Mrs. Norde Wilson

\$100 - \$249 (Sustaining)

Dr. Richard Adams
Ms. Edith Alcorn
Mr. and Mrs. Henry Alexander
Mr. and Mrs. Bruton Allen
Mr. Robert E. and Dr. Lynn Anderson
Mr. and Mrs. Joseph F. Antosek III
Mr. and Mrs. Robert W. Bailey
Dr. and Mrs. Jeffrey Baker
Mr. and Mrs. Ralph Baker
Mr. and Mrs. Matthew Barr
Mr. and Mrs. Bryce Parker Beard III
Mr. and Mrs. Clarence B. Beaver, Jr.
Mr. and Mrs. James C. Benton, Jr.
Dr. and Mrs. Robert Bertram
Mr. and Mrs. Marshall Bickett
Mr. and Mrs. Edward Birkinshaw
Dr. and Mrs. Wilbert W. Blackman
Mr. and Mrs. Steve Blount
Mr. and Mrs. Tom Bost
Drs. David and Kathy Boyd
Mr. and Mrs. Christopher S. Bradshaw
Mr. and Mrs. Benjamin H. Bridges III
Mr. and Mrs. V. Burt Brinson
Ms. Linda J. Brisbin
Mr. and Mrs. Bachman Storch
Brown, Jr.
Mr. and Mrs. Carl W. Brown, Jr.
Honorable Charles Brown and
Ms. Emily Ford

Mr. and Mrs. Edward Addison Brown
Mr. and Mrs. Paul A. Brown
Ms. Claudia Bulthuis
Dr. and Mrs. John H. Bumgarner
Mr. and Mrs. William R. Burgin
Colonel John S. Cadwallader
Mr. and Mrs. William W. Cameron III
Mr. and Mrs. John R. Casey
Dr. and Mrs. John Cave
Mr. and Mrs. Nathan Chambers
Mr. and Mrs. G. Boon Chesson
Mr. and Mrs. David S. Clay
Mr. and Mrs. Donald Clement III
Mr. Donald Clement, Jr.
Mr. Willie L. Clement III and
Ms. Katherine Murdoch
Mr. and Mrs. Melvin Glenn Cline
Representative Lorene Coates
Mr. Charles R. Coble
Dr. and Mrs. Steven Colwell
Dr. and Mrs. Jason Connelly
Reverend Cathy A. Cook and
Mr. Kenneth E. Criffield
Mr. and Mrs. Darryl Corriher
Mr. and Mrs. English D. Cook
Mr. and Mrs. William S. Coxe
Dr. and Mrs. John Robert Crawford III
Mr. and Mrs. Ronald E. Crawley
Ms. Mary C. Cridlebaugh
Mr. Robert Crum and
Ms. Cherie L. Turner
Mr. Greg Culp
Mr. and Mrs. Addison Davis
Ms. Carla Della Valentina
Dr. and Mrs. Pierre d'Hemecourt
Mr. James Dillon
Mr. and Mrs. Glen Dixon
Mr. and Mrs. Michael Doran
Mr. and Mrs. Stephen J. Drinkard
Dr. and Mrs. Frederick Mast Dula
Mr. and Mrs. Lindsey Dunevant
Mr. and Mrs. J. Michael Dunham
Mr. and Mrs. Brian Dwyer
Mr. and Mrs. Harold C. Earnhardt
Dr. and Mrs. Frank Eason
Mr. and Mrs. Lawrence Allen Edwards
Mr. and Mrs. Charles W. Elliott
Mr. and Mrs. James Emerson
Mr. and Mrs. Jim Epting
Mr. and Mrs. K. V. Epting
Mr. Louis Eubanks
Mr. and Mrs. Fred M. Evans
Mr. and Mrs. Richard Everson
Mr. and Mrs. Luke Fisher
Mr. and Mrs. Paul E. Fisher
Mr. and Mrs. W. O. T. Fleming
Mr. and Mrs. Ames Flynn
Honorable and Mrs. Larry Grant Ford
Dr. and Mrs. Donald R. Fortner, Jr.
Mr. and Mrs. James F. Fowler
Mr. and Mrs. Tyler Frick
Mr. and Mrs. J. Michael Fuller
Dr. and Mrs. Robert Gaither
Mr. and Mrs. Tomme T. Gamewell
Mr. and Mrs. Keith Gapen
Mr. and Mrs. Dale E. Gentle
Mr. and Mrs. Edgar W. Gettys
Dr. and Mrs. Carl A. Girelli
Ms. Adele Marie Goodman
Dr. and Mrs. Myron A. Goodman, Jr.
Mr. and Mrs. Richard Park Goodman
Mr. and Mrs. Cress Edward
Goodnight, Jr.
Mr. and Mrs. Cress E. Goodnight III
Mr. and Mrs. Frank W. Goodnight
Mr. and Mrs. James Beall Graham
Mr. and Mrs. Wilson Graham
Dr. and Mrs. Gordon A. Grant
Mr. and Mrs. William F. Greene
Mr. and Mrs. B. Alex Grenoble
Reverend and Mrs. Thomas Griffiths
Ms. Caroline Grissett
Dr. and Mrs. James R. Hardin
Mr. and Mrs. T. Burt Harris
Mr. and Mrs. M. Thomas Hatley, Jr.
Mr. and Mrs. Mark Hayden
Mr. and Mrs. Dwight L. Hedrick, Jr.
Mr. and Mrs. John M. Henderlite
Mr. H. L. Hill
Dr. and Mrs. Jerry Hill, Jr.
Mr. and Mrs. Owen R. Hill
Mr. and Mrs. Paul Hinkle
Mr. and Mrs. John E. Hlavacek
Reverend and Mrs. Wayne Hoagland
Mr. William E. Hollan, Jr.
Mr. and Mrs. Michael M.
Hollingsworth
Mr. and Mrs. Boyd Hough
Dr. and Mrs. Russell Howerton
Mr. and Mrs. Joel Hubbard
Mrs. James Giles Hudson, Jr.
Mr. John T. Hudson
Mr. and Mrs. Richard Long Huffman
Mr. and Mrs. J. Edwin Hunter
Ms. Rebecca E. Hyde
Ms. Anne M. Ingram
Mr. and Mrs. Fred A. Irving, Jr.
Mr. and Mrs. William C. Isenhour
Mr. and Mrs. Nash Isenhower
Dr. and Mrs. Atlee Rollins Johnson III
Dr. and Mrs. James C. Johnson
Ms. Joanne Johnson
Dr. and Mrs. David Jones
Mr. and Mrs. Larry O. Jones
Dr. and Mrs. Richard D. Jordan
Mr. and Mrs. William Dudley Kenerly
Mr. and Mrs. William K. Kepley
Mr. and Mrs. Vernon Ketron
Mr. Tom Kirkman
Mr. and Mrs. Timothy Klaus
Mr. and Mrs. George Fisher Kluttz
Honorable and Mrs. William Clarence
Kluttz, Jr.
Dr. and Mrs. Robert E. Knott
Mr. and Mrs. Jim Knowles
Mr. and Mrs. Robert H. Knox III
Mr. and Mrs. Earle Koontz
Dr. and Mrs. Wayne C. Koontz
Brigadier General and Mrs. William
Lackey
Mr. and Mrs. Ervin E. Lampert, Jr.
Mr. Robert Langdell
Dr. and Mrs. Raymond Lassiter
Mr. and Mrs. John Laughlin
Mr. and Mrs. Ryan Lawson
Mr. and Mrs. Francis Rivers
Lawther, Jr.
Mr. and Mrs. Herbert L. Lawton
Ms. Sarah B. Ledbetter
Mr. and Mrs. John F. Lentz
Lexington State Bank
Mr. and Mrs. Erik Lipscomb
Mr. and Mrs. Robert Lowe
Dr. Deborah Lucas and
Mr. Richard Lewis
Dr. and Mrs. David J. Mayberry
Mr. and Mrs. Richard J. McGuire
Dr. and Mrs. Edward McKenzie
Mrs. Paul Meech
Mr. and Mrs. Clyde B. Mickle, Jr.
Mr. and Mrs. Dan Mikkelsen
Dr. and Mrs. Bill Milner
Dr. and Mrs. James Mitchell
Mr. and Mrs. Peter Mooney
Mr. and Mrs. John McD. Moore
Mr. and Mrs. Johnny C. Moore
Dr. and Mrs. Thomas Lynch Murphy
Dr. and Mrs. Vaughn Nelson
Mr. and Mrs. George A. Noble
Mr. and Mrs. Michael T. North
Mr. and Mrs. Ken Osterhus
Mr. and Mrs. J. Foster Owen
Ms. Alisa Palmer
Mrs. Frank Strong Parrott
Mr. Brad Penley
Dr. W. Gaston Penry, Jr.
Mr. and Mrs. Mark B. Perry
Ms. Barbara T. Perzel
Mr. John Petrie and
Ms. Anna Rufty-Petrie
Mr. Brian James Pfaff
Mr. and Mrs. John R. Philpott
Mr. Gene Pickler
Mr. and Mrs. James Piner, Jr.
Mr. Jim Plant
Mr. and Mrs. J. Andrew Porter
Mr. Keith A. Powlas
Mr. and Mrs. David L. Pressly, Jr.
Mr. and Mrs. Glenn M. Pugh
Mr. James Randolph
Mr. and Mrs. Sam A. Rankin
Mr. and Mrs. Richard R. Reamer
Mr. and Mrs. Ricky Joe Reich
Dr. and Mrs. Richard A. Reitz
Mr. and Mrs. Chancellor Murray
Reynolds
Dr. and Mrs. John O. Reynolds, Jr.
Dr. and Mrs. James M. Rhyne
Mr. and Mrs. John G. Riley
Mr. and Mrs. Kent Roberts
Mr. and Mrs. Thomas Clinton Robins
Mr. and Mrs. Scott Robinson
Mrs. Hans Roemer
Mr. and Mrs. Bobby L. Rusher
Mr. and Mrs. Joseph G. Rutledge III
Ms. Diane Scott
Mr. and Mrs. David E. Setzer
Mr. and Mrs. Michael Shadrouti
Dr. and Mrs. Frank T. Shafer
Reverend and Mrs. Banks D.
Shepherd
Mr. and Mrs. D. Wayne Shepherd
Mr. and Mrs. Charles P. Sherrill
Mr. Jack M. Sherrill
Mr. and Mrs. Gregory Scott Shields
Mr. Steve Shive and Ms. Melissa Eller
Dr. Pam Westmoreland Sholar
Mr. and Mrs. Richard Shulenburg
Mr. and Mrs. Ian Silversides
Dr. and Mrs. David G. Skowronek
Dr. and Mrs. Norman R. Sloop
Mr. and Mrs. E. Hayes Smith
Mr. George E. Smith
Mr. and Mrs. Ray Smith
Mr. and Mrs. Stephen J. Smith
Mr. and Mrs. Tom E. Smith
Mr. and Mrs. Walter L. Smith
Mr. and Mrs. Eddy Snow
Mr. and Mrs. Clifford D. Sorel
Mr. and Mrs. Charles L. Sowers
Mr. and Mrs. Maxwell K. Spear, Jr.
Mr. and Mrs. James Anderson
Sparks, Jr.
Dr. and Mrs. John Robert Spencer
Ms. Joyce Spiceland
Dr. and Mrs. Robert Gibson Steele
Dr. and Mrs. Charles Steinman
Mr. and Mrs. Smith Stokes

Mr. and Mrs. Ned A. Storey, Sr.
 Mr. and Mrs. J. Michael Strother
 Mr. and Mrs. David W. Swaim
 Mr. and Mrs. Charles David Taylor, Jr.
 Dr. and Mrs. Willard C. Thompson III
 Dr. and Mrs. Willard Ray Thompson
 Mr. and Mrs. William Tippet
Dr. and Mrs. Erron Towns
Mr. and Mrs. Ray-Kent Troutman
 Mr. and Mrs. Bill Truitt
 Mr. Chris H. Verner and
 Ms. Gail Poulton
 Wachovia Bank
 Mr. and Mrs. E. William Wagoner
 Mr. and Mrs. E. Walter Wagoner
 Mr. and Mrs. W. Price Wagoner II
Mr. and Mrs. Barry Walbourn
Dr. and Mrs. Boyd Watts
 Dr. John Edmund Wear, Jr.
 Dr. and Mrs. John C. Webb
 Dr. and Mrs. William Whitaker
 Webb, Jr.
 Dr. and Mrs. William Whitaker
 Webb III
 Mr. and Mrs. Donald C. Webster
 Mr. and Mrs. Alfred F. Welling, Jr.
 Mr. and Mrs. Jason Wenker
 Mr. and Mrs. J. Jay Whittington
 Mr. and Mrs. Scott Whittington
 Mr. and Mrs. Neil Wilkinson
 Ms. Shelley Williamson
 Dr. and Mrs. Edwin Wilson
 Mr. Joseph R. Wilson, Jr.
 Mr. and Mrs. Norde Wilson
 Dr. and Mrs. Robert W. Wilson
 Mr. and Mrs. David Wood
 Mr. and Mrs. William R. Wood III
 Mr. and Mrs. Robert H. Wright
 Mr. and Mrs. H. Darrell Young

\$50 - \$99 (Family)

Mr. and Mrs. Milton Reid Acree
 Mr. and Mrs. Glen Albracht
 Dr. and Mrs. Brandon Aron
 Mr. and Mrs. Robert W. Bailey
 Dr. Michael Baranski
Mr. and Mrs. Jerry Barger
 Ms. Gail Barnhardt
 Mr. and Mrs. Oscar Brooks Barnhardt
 Dr. and Mrs. Ronnie Barrier
Mr. Kemal Burkay
 Mr. and Mrs. Michael Stephen Bauk
 Ms. Gwen Beavans
 Mr. and Mrs. Clarence B. Beaver III
 Mr. and Mrs. Kent Beck
 Mr. and Mrs. Harold Belk
 Mr. and Mrs. Bud Bender
 Mr. and Mrs. David Yates Bingham
 Mr. and Mrs. Charles Brummitt
 Ms. Elberta Burnham
 Mr. George J. Busby
 Mr. and Mrs. Davis J. Cable
 Dr. and Mrs. Thomas Kern Carlton, Jr.
 Mr. and Mrs. W. Summersett Carter
 Mr. and Mrs. Robert W. Charles
 Mr. and Mrs. G. Boon Chesson
 Mr. and Mrs. Len Clark
 Mr. and Mrs. Kevin Clay
 Mr. and Mrs. Don Conner
 Mr. and Mrs. Sam E. Correll
Ms. Marla Coulthard
 Mr. William Crowder (d)
Mr. and Mrs. Nathan Dickert
 Mr. and Mrs. Thomas Bradley Dixon

Doran, Shelby, Pethel and Hudson

Attorneys
 Mr. and Mrs. John A. Drye
Mr. and Mrs. Lindsey Dunevant
 Mr. and Mrs. J. Michael Dunham
 Mr. and Mrs. J. Robert Edwards
 Ms. Linda Engstrom
 ERA Glover Realty
 Dr. Bertha Escoffery
Ms. Lynn MacDougall-Fleming
 Ms. Laura Hays Frazier
 Mr. and Mrs. Tommie T. Gamewell
 Dr. and Mrs. Robert Glassgow
 Mr. and Mrs. Joseph R. Godwin
 Mr. and Mrs. Walter Gordon
 Mr. and Mrs. Edwin Hall
 Ms. Mary Hart
 Mr. and Mrs. Wesley Hartsell
 Mr. and Mrs. J. P. Helms
 Mr. and Mrs. Michael Hensley
 Mr. and Mrs. Robert C. Hinkle, Jr.
 Mr. and Mrs. Hoyle Holland
 Hon. and Mrs. John L. Holshouser
 Mr. and Mrs. Perry D. Hood
 Mrs. Stephen Hooper
 Innes Street Drug Company
Mr. and Mrs. John Isenhour
 Mr. and Mrs. William C. Isenhour
 Mr. and Mrs. William Robyn James
 Mr. and Mrs. Archibald Leroy
 Jarrell III
 Mrs. Allen S. Johnson, Jr.
 Mr. and Mrs. Harley H. Jones
Mr. Phillip Juneau
 Mr. and Mrs. W. Douglas Kearney
 Ms. Sarah C. Kellogg
 Mrs. Alice Hudson Ketcham
Dr. Phillip Kirk
 Honorable and Mrs. Constantine
 Kutteh
 Las Palmas Restaurant
 Mrs. Jeanette B. Lassiter
 Mr. and Mrs. John G. Lewis, Jr.
 Mr. and Mrs. Mark N. Lewis
 Mr. Randolph Lewis and
 Ms. Abigail Jennings
 Dr. and Mrs. Mark Lins
 Reverend and Mrs. I. Mayo Little
 Dr. and Mrs. Bobby A. Lomax
 Ms. Janet Magaldi
 Ms. Esther C. Marioneaux
 Dr. and Mrs. Richard W. Martin
 Mr. Blair Matthews
 Mr. Younger Mattox
 Mr. and Mrs. Joseph R. McDonald
 Mr. and Mrs. Jerry McKenzie
 Mrs. Rebecca Reitz McKinley
 Mr. Maximilian Atlas Merrill
Mr. Paul R. Mitchell
 Mr. and Mrs. Fred Bruton Monroe
 Mr. Edward Mulvey and
 Ms. Julia B. Riddle
 Dr. and Mrs. John B. Murphy
 Ms. Margaret Newbold
 Mr. and Mrs. Harold Hastings
 Newman III
 Mr. and Mrs. Dale R. Newport
 Mr. and Mrs. James Norman III
 Ms. Katharine W. Osborne
 Mr. and Mrs. J. Foster Owen
 Mr. and Mrs. Charles A. Peacock
 Mr. and Mrs. Dewey Peck
 Mr. and Mrs. John T. Peeler
 Mr. Glenn H. Penninger, Jr.
 Mr. and Mrs. Clifton A. Pickett
 Ms. Martha Rogers Plaster
Mr. and Mrs. Sam A. Rankin

Mr. and Mrs. Ray D. Raymer, Jr.
 Mr. and Mrs. Parker A. Reische, Jr.
 Mrs. Richard J. Rendleman
 Mr. and Mrs. Robert T. Roakes
 Mr. and Mrs. Charles Roe
 Mr. and Mrs. Bobby Rusher II
 Mr. John Bruce Safrist
 Mr. and Mrs. Robert Stephen Setzer
 Mr. and Mrs. David C. Shaver
 Mr. and Mrs. Larry Shaw
 Mr. and Mrs. D. Wayne Shepherd
Mr. and Mrs. Thomas G. Shugrue
 Ms. Susan Sides
Mr. John Sigmon
 Dr. and Mrs. James A. Smith
 Mr. and Mrs. Ronald L. Smith
 Mr. and Mrs. Lee Snow
 Mr. Greg Talbott and Ms. Jean Vollrath
 Dr. and Mrs. Heath C. Thornton
 Mr. and Mrs. Roberts E. Timberlake
 Mr. and Mrs. Lloyd William Troxler
Mr. Jim Tucker
 Mrs. Robert Randolph Turner III
 Ms. Robin Underwood
Dr. and Mrs. Charles Upchurch
Ms. Virginia Wall
 Dr. and Mrs. W. Max Walser
 Mr. Mike Walter
 Mr. and Mrs. Thomas Watson
 Mr. and Mrs. Paul Weisler
 Mr. and Mrs. Henry Westmoreland
 Dr. and Mrs. Robert Wilson
 Mr. and Mrs. Paul Bernhardt Woodson
 Mr. and Mrs. Ronald G. Wray
 Ms. Jean Wurster
 Mr. John Yelton

\$25 - \$49 (Individual)

Mr. and Mrs. Mark S. Alley
Mr. and Mrs. Thomas G. Allison
 Mr. and Mrs. Kent Beck
 Mr. and Mrs. Owen Bradford Boone
 Ms. Ann Coughenhour Boyd
 Ms. Diana Burge
 Mr. and Mrs. Floyd M. Burton
Mr. Christian Cherry
 Mr. and Mrs. Len Clark
 Mr. Wayne Cline
 Mr. Alex Cousins
 Ms. Vanda Lippert Crowell
 Dr. Gabriel Cumming
 Mr. and Mrs. Norris A. Dearmon
 Ms. Jamima P. DeMarcus
 Mr. and Mrs. James A. Dunn
Ms. Tammy Dunn
 Drs. Douglas and Laurel Eason
 Dr. and Mrs. William C. Findt III
 Mr. and Mrs. Ezra C. Gilliam
 Mr. and Mrs. Douglas Glasgow
Mr. Robert E. Goodwin
 Mr. David A. Hannah and
 Ms. Laurie K. McDade
 Mr. and Mrs. John W. Helms
Ms. Bunny V. Howell
Mr. Robert A. Jones
 Mr. Kenneth Knight
 Ms. Kimberly Lane
Mr. Wayne Laney
Ms. Mary Anne Laningham
 Mr. and Mrs. David C. Littrell
 Mr. and Mrs. Ross William McCaless
 Mr. and Mrs. Darren Menius
 Mr. David Mickey
 Ms. Sally Murphy
 Ms. Frieda Nikolai (d)
Ms. Vicky Poindexter

Mr. Reid Pollard

Ms. Doris Porter
Mrs. Louise Johnson Price
Mrs. Arnold Quesenberry
Mr. and Mrs. Ray Raymer
Mr. and Mrs. James Reilly

Mr. and Mrs. Roger Leon Ross

Ms. Nancy Ruppert
Ms. Myra J. Scarboro
Ms. Joan R. Scott
Mrs. Eleanor E. Sifford
Mr. Eric Slipp
Ms. Margaret Stevens
Ms. Elaine Stiller
Mr. and Mrs. Terry M. Swaim

Ms. Victoria Taylor

Ms. Juanita W. Teschner

Mrs. M. Stevenson Thurston

Dr. and Mrs. Harry G. Walker
Mr. and Mrs. William C. Warlick
Mr. and Mrs. E. Stephen Watson
Dr. Martha Kirkland West
Mr. and Mrs. Alfred Wilson

Ms. Julia Wilson

Honorariums

In honor of Barbara Lawther
Altrusa Club of Salisbury

In honor of Dyke Messinger
Stephen Bullock, Craig
Neuhardt, Richard
Harris, and Linda Bailey

In honor of Sue Carter Walser
Ms. Sarah G. Borders
Mr. and Mrs. Melvin B.
Kelly
Mr. and Mrs. Robert W.
Stamey
Mr. and Mrs. Ned A. Storey

In honor of Dr. John Edmund Wear, Jr.
Mr. and Mrs. Thomas C.
Childress

*In honor of Uwharrie National Forest,
USDA*
EcoLogic

In honor of James Gilman
Ms. Lyn Gilman-Garrick and
Mr. Paul J. Garrick

In honor of John and Francie Huffman
Mr. and Mrs. Morgan
Huffman

In honor of Kitty Huffman
Mr. and Mrs. Richard Long
Huffman

*In honor of Mr. and Mrs. Fred
Stanback, Jr.*
Mr. and Mrs. Ralph W.
Ketner
Ms. Laura Hays Frazier

*In honor of Mr. and Mrs. William C.
Stanback*
Ms. Laura Hays Frazier

In honor of Mr. and Mrs. Jeff Michael
Dr. and Mrs. Richard V.
Liles Jr.

In honor of the marriage of Lynda and

Jack Errante

Ms. Elizabeth V. Rankin (d)

*In honor of Mr. and Mrs. Carl C. Staley,
Mr. and Mrs. James C. Riley, Mr. and
Mrs. William C. Stanback, Mr. and Mrs.
Fred Stanback, and Mrs. Frank Strong
Parrott*

Mr. and Mrs. John G. Riley

*In honor of the Birkhead Property
Purchase*

Dr. and Mrs. Robert Scott
Dr. Richard Adams
Mr. and Mrs. Robert W.
Stamey

In honor of Jason A. Walser

Mrs. Francis Montgomery
Steele
Mr. and Mrs. Adam Walser

In honor of Judge Peter Wilson Hairston
Arlene Edwards Thompson

*In honor of Mr. and Mrs. Bud Mickle, Mr.
and Mrs. Bob Cook, Mr. and Mrs. Ned
Storey, Judge and Mrs. Robert Collier,
Mr. and Mrs. Bob Ebert, Mr. and Mrs.
Layton Getsinger, and Mr. and Mrs. Ja-
son Walser*

Ms. Sue Carter Walser

Memorials

In memory of Peter Wilson Hairston
Mr. and Mrs. Andrew James
Abramson
Mr. and Mrs. Brack R.
Bailey III
Mr. and Mrs. Jeffrey A.
Ceaser
Mr. and Mrs. J. Charles
Dunn
Miss Lillian Heitman
Gascoigne
Ms. Martha Lou Heitman
Gascoigne
Ms. Amy Grissom
Mr. and Mrs. Robert G.
Hazen
Mr. Robert Langdell
Mr. Carroll Leggett
Mr. and Mrs. Charles H.
McGirt
Mr. and Mrs. Dan G. Smith
Arlene Edwards Thompson
Mr. and Mrs. Jason Albert
Walser

In memory of Willis "Bud" Shellhorn
Mr. and Mrs. Joe G. Blake
Mr. and Mrs. David A. Cort
Mr. and Mrs. Floyd M.
Burton
Mr. and Mrs. Ronald E.
Owen
Mr. and Mrs. Arthur W.
Pinkston and Gary and
Alex Pinkston Kenny
Mr. and Mrs. Jason Walser

*In memory of Donald Henry Lomax,
MD*

Mr. and Mrs. P. Collins
Barwick III
Dr. and Mrs. Raymond L.
Lassiter

In memory of Virginia Holt Spake
Mr. Angelo P. Capparella

In memory of Pearl Hege Dick
Mr. and Mrs. Harvey Dick

*In memory of Mr. and Mrs. Myron A.
Goodman, Sr.*
Mr. and Mrs. Trey Farley

In memory of Roy Thompson
Mr. Peter W. Hairston

In memory of John R. Harris
Mr. and Mrs. Charles H.
Harris Jr.

In memory of Oscar and Ruby Helms
Mr. and Mrs. Mark Helms

In memory of Glenn Elwood Ketner, Sr.
Mrs. Glenn Elwood
Ketner Sr.

In memory of Mr. Harold Parham
Ms. Phyllis T. Parham

In memory of Albert F. Walser
Mr. John L. Petrie
Mr. and Mrs. Ned A. Storey
Mr. and Mrs. Adam Walser

In memory of Donald M. Pierce
Ms. Vicki Pierce

In memory of Lucius Perry Bell III
Mr. and Mrs. Harold Knox
Roberts Jr.

In memory of Virginia Poe Shutt
Mr. George H. C. Shutt III

In memory of Zachary Griffith Smith
Mr. and Mrs. Dan G. Smith

In memory of Allene Hamilton
Mr. Jim Tucker



Stewardship Committee Clean-Up Day Success

The LandTrust for Central NC hosted a clean up day for members of our stewardship committee on November 2nd on our newly protected Birkhead Property. As a condition of the Clean Water Management Trust Fund (CWMTF) grant that assisted with the purchase of this property, we were required to remove a trash pile that was identified on the interior of the property prior to our purchase. Our stewardship committee stepped up and assisted us with this project, filling over 20 garbage



Keeping our land and waterways clean.

bags with various trash debris, a task that took well over 5 hours to complete.

After removing the trash, most of which was glass or metal, we were able to recycle almost all of the trash we collected. Thanks so much to all who came out and helped us with this project. If you'd like to assist The LandTrust with stewardship or management projects, contact us at landtrust@landtrustcnc.org.

Volunteer Profile

Bob Pendergrass

Bob Pendergrass is one of The LandTrust's most inspiring volunteers. He sincerely believes in land preservation, particularly in light of the growing and expanding human population, and emphasizes the importance of retaining a connection to the natural world.

Bob is married to Darlene and they have a 12 year old son, Liam. Bob is originally from Rowan County and other than attending college at NC State University, where he obtained a bachelors degree in Engineering Operations, he has lived here all his life. He is employed at the Nature Center at Dan Nicholas Park, and his favorite part of his job is being able to share excitement with all kinds of people about the natural world. Bob says, "I feel very fortunate to be able to do this. It is a privilege."



When asked about why he offers his volunteer time to The LandTrust, he states "In my opinion, the Land Trust locally and the Nature Conservancy nationwide will do more in the long run for conservation of species than most if not all other organizations. I am very proud of the cooperative work that we have done together on Eagle Point Nature Preserve and Dunn's Mountain. It has been a personal pleasure to work with the Land Trust." Thanks Bob!

Board Member Profiles

Lindsey Dunevant

As an employee of the city of Albemarle's Parks and Recreation Department for over 30 years, Lindsey Dunevant brings a wealth of experience and knowledge to our board. He joined our board in 2006, and with his background and insight has been a great addition.

He attended West Albemarle Elementary, Albemarle Junior High and graduated from Albemarle Senior High School in 1971. He achieved a Bachelor of Science degree in Recreation and Parks Administration from North Carolina State University in 1975. After graduation, the City of Albemarle Parks and Recreation Department hired Lindsey as a Program Supervisor. In 1977, he was promoted to Assistant Director. He was promoted to Director of Parks and Recreation in 1985. Lindsey continued his education by taking accounting courses and by receiving a Masters in Business Administration from Pfeiffer University in 1989. Lindsey is married to Sherry and they have two chil-



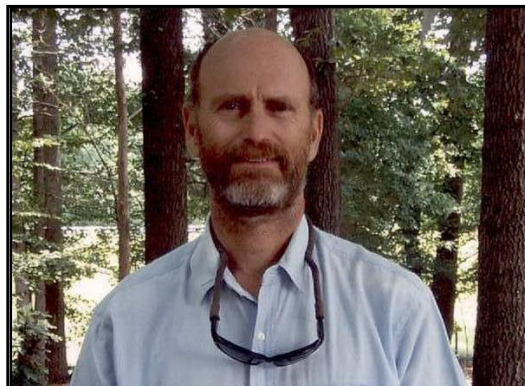
dren, Catherine and Charles.

Lindsey was elected as a Stanly County Commissioner in 2006, and has been a strong recreation and conservation advocate in this leadership position. He has also served on numerous civic committees and initiatives in Stanly County, including the Morrow Mountain State Park Advisory Committee and the Stanly County Comprehensive Recreation Study.

John Peeler

John Peeler also joined our board in 2006. He was born in Rowan County and raised in Faith and Granite Quarry. After graduating from East Rowan High in 1970, he received a Bachelor of Science in Forest Management in 1974 from NCSU. Upon graduation, he moved to the Pacific Northwest and worked as a Forest Engineer for USFS and later for Sealaska Timber Corporation. After spending some time away, he and his wife moved back to North Carolina to Davie County in 1983, where they now have a tree farm and nursery. He is a partner in J&J Forest Services LLC, which specializes in reforestation and wildlife plantings. He has been a supervisor with the Davie County Soil and Water Conservation District for the past 10 years. This position allows him to assist with putting conservation practices on the ground.

John is married to Becky, and with four children (three daughters Jerrine, Carly, Rebekah, and son Holden), John strongly



believes that conservation of our natural resources is vital to the quality of life that we are passing on to future generations.

When asked why he serves on The LandTrust Board of Directors, John states "I hold in great respect what Jason and others at LTCNC do on a daily basis. As a lifelong conservationist, I have come to realize that land preservation may in some cases be the only way to conserve our natural resources." The LandTrust is fortunate indeed to have both John and Lindsey on our board.



Bob Pendergrass explains intricate relationship between falconer and bird.



The federally endangered Schweinitz's sunflower on the Uwharrie Mountain Festival Nature Walk.



Glenn Hudson and son Briggs enjoy fishing on Badin Lake.

THE LANDTRUST FOR CENTRAL NORTH CAROLINA

The LandTrust is a private, nonprofit organization working with private and public landowners to protect the special natural areas, family farms and rural landscapes of Anson, Cabarrus, Davidson, Davie, Iredell, Montgomery, Randolph, Richmond, Rowan and Stanly Counties. With 501 (c) (3) status, all donations to The LandTrust qualify for maximum tax deductions.

BOARD OF DIRECTORS

Dan R. Williams, President
 Dyke Messinger, Vice President
 H. Franklin Sherron, Jr., Secretary
 David F. Simmons, Treasurer
 Moni C. Bates
 Renessa Brown
 Darryl Corriher
 Lindsey Dunevant
 Amy Grissom
 John Hart
 Bill Medlin
 Jeff Michael
 Peg Knox Morrison
 John Peeler

BOARD OF ADVISORS

Joe Adams
 Raymond D. Coltrain
 J. Myrick Howard
 John Lentz
 Joseph McDonald
 David Springer
 Alice Stanback
 Fred Stanback
 William C. Stanback
 Charles E. Roe
 Roberts E. Timberlake

STAFF

Jason A. Walser, *Executive Director*
 Andrew Waters, *Operations Director*
 Barbara Martin Lawther, *Development Director*
 Michele d'Hemecourt, *Land Protection Specialist*
 Crystal Cockman, *Uwharrie Conservation Specialist*



To protect and preserve the land—natural areas, rural landscapes, family farms and historic places within North Carolina's heartland.

P.O. Box 4284
 Salisbury, NC 28145
 704-647-0302

Non-Profit Org.
 U.S. Postage
PAID
 Salisbury, NC
 Permit No. 111