

# FIELD NOTES

The LandTrust for Central North Carolina

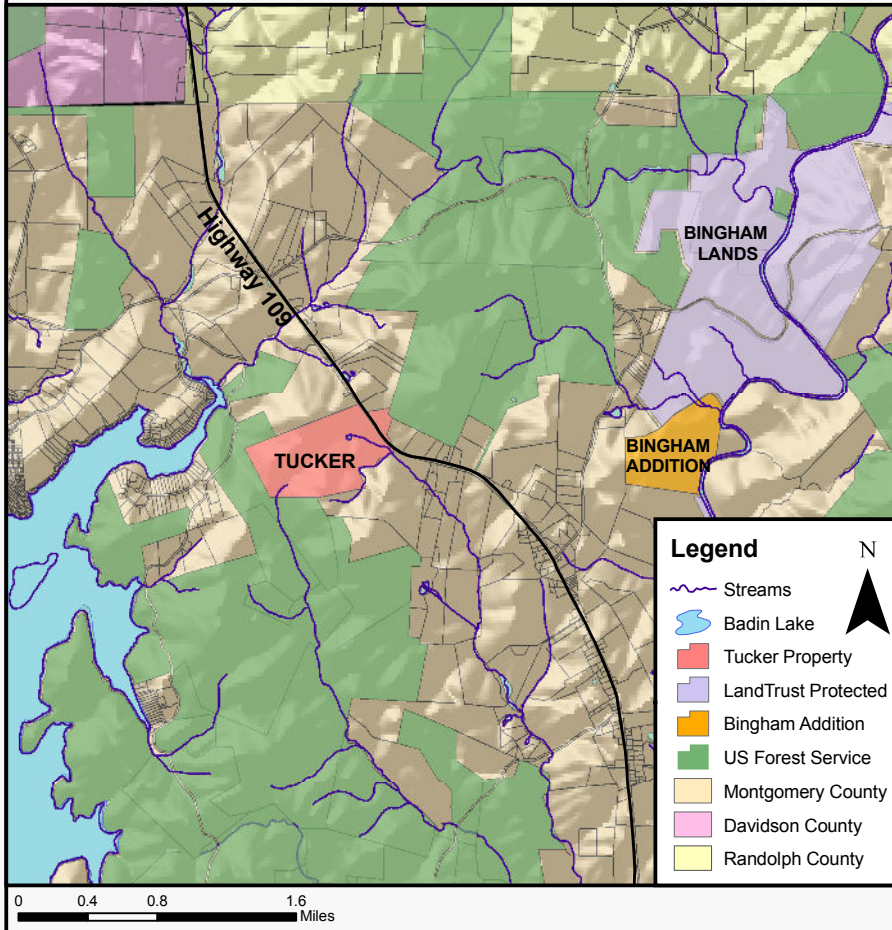
P.O. Box 4284  
Salisbury, NC 28145-4284

Telephone: (704) 647-0302  
Facsimile: (704) 647-0068

[www.landtrustcnc.org](http://www.landtrustcnc.org)

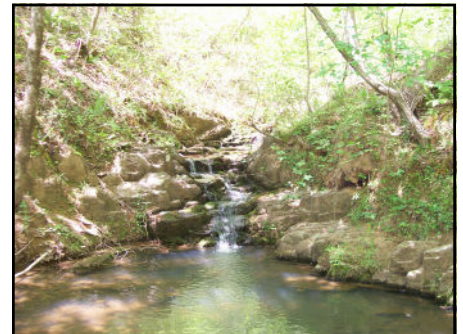
*Field Notes is a midseason newsletter used by The LandTrust to update its contributors on the progress of projects, upcoming events, and news in the office.*

## Tucker Property - Montgomery County



## Bingham Lands Addition Protected

The southernmost portion of the Bingham Lands, an additional 126 acres, was purchased this spring. With the addition of this tract, this now brings the total acreage of this LandTrust owned property to 1,288 acres. This property is bordered to the north by another parcel of Bingham Lands, and to the south is an Ecosystem Enhancement Program (EEP) easement on another 18 acres of riparian buffer on the Uwharrie River.



*Continued on page 4...*

## A Partnership of Past and Present

This spring Jim Tucker visited his family property in Montgomery County with camera in hand. "It may be silly, but this could be the last time we ever see this house, so I wanted to video tape it and have something to remember it by," Tucker said to LandTrust staff who met him at the property that day.

The 185-acre property, with its landscape of rolling hills, contains

the headwaters of McClean's Creek and several other tributaries, with some patches of native hardwoods and white pines. It also connects two substantial tracts of United States Forest Service property stretching from Badin Lake all the way to the protected Bingham Lands on the Uwharrie River, purchased by The LandTrust last fall.

*Continued on page 3...*

### Table of Contents

- Letter from the President..... 2
- Tribute to Connor..... 3
- Evening with John Hart..... 4
- RiverDance Report..... 5
- Recent Outings & Events..... 6
- Upcoming Outings & Events... 7
- Protecting Streams ..... 8
- Donations..... 9-10
- Board Member Profiles..... 11

## *Letter From The Board President*

### *“The Beauty of the Land In Between”*

*By Dan R. Williams*



*Dan R. Williams*

We, the residents of Piedmont, North Carolina, may be some of the luckiest people on earth considering the strategic location of our homes. Recently, within one week, Jan and I were able to enjoy the cool evening mountain air one weekend, while spending an enjoyable several days with our families on the beaches and dunes of Atlantic Beach the next. Two hours to the west and around four hours to the east and we are able to enjoy the yin and yang of God’s lovely creation.

However we shouldn’t overlook the unique and unmistakable beauty of the “land in be-

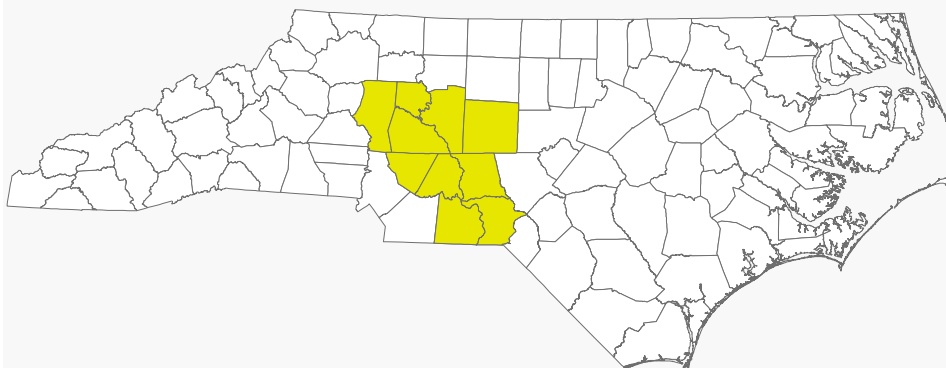
tween”... Piedmont North Carolina. To me, our location is what makes The LandTrust for “Central” North Carolina so unique in its mission – farmland preservation, natural heritage sites, forest management, rivers and wetlands and wildlife habitat; all of the above are the reasons for the existence of The LandTrust. While broad in our mission, diverse in our appeal, the vast opportunities afforded us can at times, be overwhelming. Your LandTrust board constantly is faced with the problem of more opportunities available than resources to engage.

Support from our membership, while critical to our existence, constitutes only a fraction of the

resources needed to fulfill our mission. Much of our funding comes from state and federal agencies whose budgets are subject to political and social winds which can change dramatically. We have been extremely fortunate to have received significant support from a few benevolent individuals who believe without reservation in our mission.

The beauty of our state, the importance of our region, the diversity of our mission and the trust of our supporters are all the reasons the LandTrust for Central North Carolina continues to be a significant factor in ***saving the places you love.***

### *Preserving North Carolina's Heartland*



### *The LandTrust for Central North Carolina*

## *Protection of Tucker Property (Continued)....*



But Tucker's affection for the property was a personal one. The property contains a family home built in the early 1800s that has been the site of Tucker family reunions for decades. Through a series of events, the ownership of the property passed out of the family. The current owner, having no connection to the land, was planning to sell within a couple months.

"Although we did not have money in hand to purchase this property, we knew we would re-

gret it if we let this opportunity pass us by. For both wildlife and recreation, this property is a critical link to other parcels we have already invested in nearby," notes Executive Director Jason Walser. "Thanks to the patience of Craig Bouie (an attorney representing the estate of the landowner) and some creative financing, we were able to at least temporarily preserve this opportunity for a hopeful National Forest expansion."

"Although we can't save every family farm or historical home site, the location and landscape of this site made it a project we just couldn't pass up. And providing Jim and his family with the ability to continue visiting this homeplace creates a truly unique conservation success story," says Uwharrie Conservation Specialist Crystal Cockman. "Jim Tucker and his family can now rest

easy knowing their family home is protected. The rest of us can also rest easy knowing that this crucial link for the Uwharrie National Forest trail system will still be around to provide recreational enjoyment."

The LandTrust's mission has always been to protect our "special natural areas, family farms and rural landscapes" in our ten-county region. And we hope that, along with the tangible benefits of land conservation, we can provide something less readily quantifiable but possibly even more personal and fulfilling. Sometimes this is manifested as a spiritual connection with the natural world, or a simple place of mental respite away from the hustle and bustle of the modern world, or even a nostalgic connection to the past. For Jim Tucker, The LandTrust was a symbol of hope.

## *Tribute to Connor Coleman*

The LandTrust wished a fond farewell to Stewardship and Land Conservation Coordinator Connor P. Coleman in May. Connor left The LandTrust to pursue a Masters of Environmental Management in Ecosystem Science and Management and a Master of Forestry in Forest Resource Management at Duke University's Nicholas School for the Environment.

Connor first came to The LandTrust as an intern from Catawba College, where he majored in environmental science, and joined the staff in the summer of 2005. As the LandTrust's first full-time employee dedicated to property stew-

ardship, Connor was responsible for many important initiatives in our stewardship program, including the organization of our stewardship committee, creating management plans for properties, and development of a long-term strategic plan for land stewardship and management. Connor also managed day-to-day stewardship operations such as property monitoring visits, preparation of baseline reports, and organizing the LandTrust's popular outings and events.

Connor's passion for land conservation, environmental sustainability, and Delmar's chicken, along with his positive personality, made him a

popular and respected figure among LandTrust friends. We hope you will join us in wishing him the best in his future endeavors.



## Evening With John Hart Enjoyed by All!

Over 400 guests attended a reception honoring John Hart on the evening of September 30th to celebrate the release of his second novel, *Down River*. Following up on his New York Times Best Seller *The King of Lies*, this is expected to be another national success.

Rowan County, the Yadkin River and man's relationship to the land are prominent themes throughout the book. Thus, the author thought it appropriate to offer Land-Trust supporters the opportunity to be the first in the nation to purchase his new book and hear his thoughts on it. *Down River* officially released to the public on October 2nd.

The event included a wine reception and buffet dinner, and remarks by John Hart. Special guests from New York were Peter Wolverton, Andrew Martin and Andrew Shear of St. Martin's Press. The



*East Coast Publishers and West Coast Producers with John and wife, Katie.*

West Coast was represented as well by Producers Mark Bozek and Russell Nuce from California.

Peter Wolverton told lively stories of his initial meetings with John, and praised his writing ability. He also discussed his telephone call to John to inform him that *The King of Lies* had made the New York Times Bestseller List! Mark Bozek spoke about the upcoming film version of *The King of Lies*,

which will hopefully be filmed in Salisbury. Among the stars being considered for lead roles are Cate Blanchett, Sandra Bullock, Edward Norton, Brad Pitt and Daniel Craig!

John received a standing ovation when he stood to speak to the crowd. He discussed his decision to leave the practice of law to pursue his dream of becoming a full time author.

Proceeds from the evening are being used to support The Land Trust's continued efforts to **Save the Places You Love!**



## Bingham Lands Addition (Continued)...

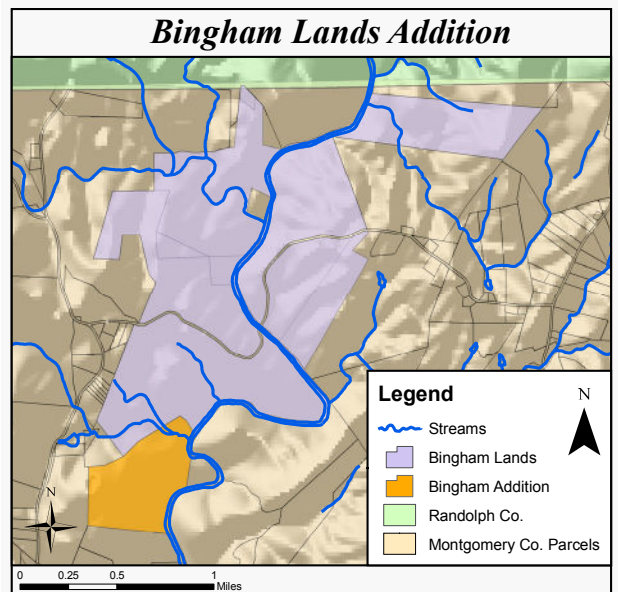


This new addition is listed as a Significant Natural Heritage site in the Montgomery County Natural Heritage Inventory as a result of the high quality hardwood forest buffer it provides for the Uwharrie River. The Uwharrie River is classified as Nationally Significant Aquatic Habitat. Two other streams, Horsepen Creek and another tributary,

also join the Uwharrie in the northern section of this property.

In addition to being a huge contiguous block of habitat for large-range wildlife, the Bingham Lands also hosts a native stand of white pines, miles of river frontage, and are home to a large variety of flora and fauna, including numerous rare and endangered mussels. With the addition of this beautiful tract, the Bingham Lands are truly a unique conservation success story. In this area, for recreation, wildlife habitat, and

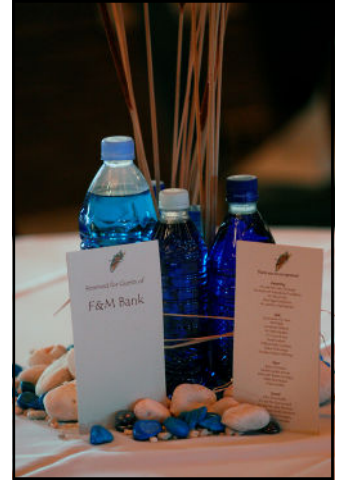
natural areas protection, there simply is not another property like it.



# Thanks for Making RiverDance 2007 the Best Yet!

On Saturday evening, July 28, over 350 guests dined and danced to support the Two Rivers Preserve project. **Kelly and Ben Goodman** chaired the event and led an outstanding committee. **Tom Wolpert** was responsible for the creative table decoration prototype which emphasized conservation and recycling. By using plastic water bottles filled with tinted water, placed on river rocks with cattails, he created a serene riverbank! Guests enjoyed a delicious cocktail buffet prepared by **The Right Touch**, and danced the night away to the sounds of **The Troupers Dance Band**. Over **\$60,000** was raised, which will be used for ongoing land protection along the Yadkin and South Yadkin Rivers.

Photo credits for this page: Sean Myers



## Thanks to our RiverDance sponsors!



J. H. COOK AND SONS, INC.  
Shoe Repair & Pedorthic Supplies

Woodson Sayers Lawther Short  
Parrott Walker & Abramson  
Attorneys



A Century of Knowledge Applied to Craft

### Underwriting

Alice and Fred Stanback  
Nancy and Bill Stanback

### Table

Community One Bank  
Mr. and Mrs. Larry Cloninger  
F&M Bank  
Goodman Millwork, Inc.  
Mr. Peter W. Hairston  
J. H. Cook & Sons  
Piedmont Natural Gas  
Foundation

Power Curbers  
Mr. Bruce Ruffy  
Silver Eagle Distributors  
Wallace Realty Company  
Walser Technology  
Woodson Sayers, Attorneys

### Major

Global Contact Services  
Mid South Tractor Company  
Miller Davis Studios  
SunTrust Bank  
Wachovia Bank

### General

ERA Glover Realty  
Mr. and Mrs. Don Leonard  
Mr. and Mrs. John  
Harris Morrison, Jr.  
Ramsey Burgin Smith, Architects  
Salisbury Motor Company  
Statewide Title

### Beverage Boosters

Brandon Aron, DMD  
C-Optical

Doran, Shelby, Pethel and Hudson  
Escape the Daily Grind  
Godley's Garden Center  
Innes Street Drug Company  
Las Palmas  
Literary Bookpost  
Salisbury Flower Shop  
Salisbury Motor Company  
Snow Benefits Group  
Waterworks Visual Arts Center  
Whittington Appraisals  
The Wrenn House

## Recent Outings & Events

### Nature Extravaganza

On April 21st, The LandTrust, with the help of Mark Lewis, herpetologist at the NC Zoo, and Jane Lewis, expert birder, hosted a nature extravaganza on our newly acquired Bingham Lands. In addition to enjoying a hike on a beautiful spring day, attendees examined snake skins, a live native mole king snake, and marbled salamanders. Jane answered questions about bird identification from calls, and Mark demonstrated how to appropriately search for and handle snakes. The beautiful backdrop of these permanently protected lands and an early morning walk to appreciate nature made for a great day for all who came out.



*Thanks to all the supporters who made this project possible and allow us to continue saving the places you love!*

### Birkhead Celebration Event

The LandTrust and local residents gathered on June 7th at the JB and Claire Davis Farm to celebrate the 290-acre Birkhead Expansion Project. The LandTrust acquired this property at the last minute from a developer who had already begun clearing the roadway for a subdivision. Residents attended this celebration to share in bluegrass and barbecue and support The LandTrust's efforts to conserve this ecologically significant area. Significant natural features include mature hardwood forests, creek frontage on 6 tributaries of the nationally recognized Little River watershed, a rare four-toed salamander occurrence, and the globally rare hillside seepage bog community. All of these features and the backdrop of the Uwharrie Mountains truly make this property a unique and important conservation success story.

### Annual Meeting at the Barber Farm

The LandTrust celebrated twelve years and the protection of over 14,000 acres at their annual meeting on June 9th, held at the historic Richard Wainwright Barber Farm in Rowan County. Attendees enjoyed an informative presentation by noted historian and Catawba College Professor Dr. Gary Freeze on rural farmland preservation. Afterward, owners Charles and Becky Barber Floyd opened their impeccably maintained farm and authentically restored historic homes for the more than 100 people in attendance to tour.



### Tuckertown Canoe Trip

On Sunday September 23rd The LandTrust hosted a fall canoe trip on Tuckertown Lake/Reservoir. After putting in at the Wildlife Resources Commission access off River Road, attendees paddled downstream and had views of some of the property the LandTrust will be permanently protecting as part of the Alcoa FERC re-licensing agreement. The weather was wonderful, with views of Bald Mountain hiked last year, and a fun time was had by all who attended. The LandTrust would like to thank Boy Scout Troop 442 for providing the canoes and their assistance with this trip.



## Upcoming Outings & Events



### ***Falconry Exhibition with Bob Pendergrass, Saturday, November 17th***

Join well-known local wildlife expert and falconry enthusiast Bob Pendergrass for a fascinating demonstration of this ancient sport. Children especially will enjoy watching these majestic creatures in flight. Time and location will be announced.

### ***Ornament Making, Saturday, December 1st, 11:00am***

The Green Goat Gallery in downtown Spencer will host young and old alike for a day of ornament making using all natural and biodegradable materials. The ornaments can be taken home or used at The LandTrust's annual tree lighting at the Salisbury Greenway.

### ***Fifth Annual Environmental Tree Lighting, Monday, December 3rd, 5:00pm***

The LandTrust's annual tree lighting ceremony is quickly becoming one of the area's best Christmas traditions. Local children will hang environmentally friendly ornaments at the Catawba College Ecological Preserve along the Salisbury Greenway. Come celebrate the season with the LandTrust!

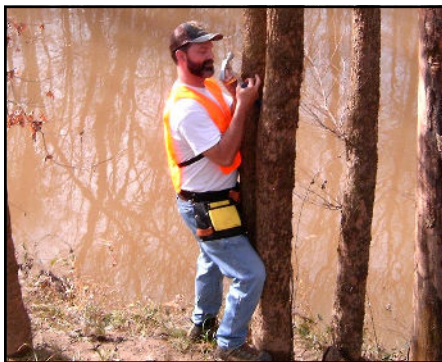
### ***Second Annual LandTrust Open House, Thursday, January 17th, 4-6pm***

The LandTrust's first open house was such a big hit, with over 60 attendees braving the snow and ice of the morning, that we have decided to make it an annual occurrence. Join us for light hors d'oeuvres at the Salisbury Land Trust office at the train depot and meet the staff and hear about the excited projects going on.

To receive updated information on LandTrust events, subscribe to our electronic newsletter by sending your e-mail address to [andrew@landtrustcnc.org](mailto:andrew@landtrustcnc.org). Or check out our website for detailed descriptions of excursions and events: [www.landtrustcnc.org/calendar\\_events.org](http://www.landtrustcnc.org/calendar_events.org).

## Stewardship Corner

The LandTrust has been busy working on increasing its stewardship and management of its lands. Along with posting boundaries, completing baseline reports, and



*LandTrust supporter Mark Lewis posts boundaries on the Bingham Lands*

monitoring each property yearly, we have undertaken additional stewardship activities. These include planting and stabilizing the roadway cut by developers on our recently acquired Birkhead Property, involving Wake Forest University in researching archeology on our Lawrenceville Property, and managing invasives on several other properties.

The LandTrust has always worked hard to "save the places you love in Central North Carolina," and appropriately stewarding these lands is pivotal to maintaining their significant natural, historical, and recreational attributes. If you would



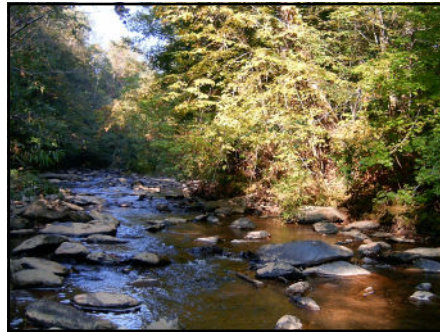
*Birkhead Roadway planted*

like to contribute to the stewardship of The LandTrust's many properties, you may do so online at [www.landtrustcnc.org/online\\_giving.asp](http://www.landtrustcnc.org/online_giving.asp). As always, thank you for supporting The LandTrust for Central N.C.!

# The LandTrust and Ecosystem Enhancement Program

## Protecting our Streams and Wetlands

Through a unique partnership with the North Carolina Department of Transportation (DOT), the N.C. Department of Environment and Natural Resources (DENR), and the Conservation Trust for North Carolina (CTNC), The LandTrust has helped save some of the region's most pristine waterways and wetlands.



*Uwharrie River on Whatley Tract*

jects in total, protecting over 19 miles of riparian buffer throughout our region. The table below shows the most recently completed EEP projects, and along with the previously completed projects featured in one of our past newsletters, the LandTrust has assisted with the protection of over 1,078 acres of riparian buffer through this great program.



*Dutch Buffalo Creek on the Wickliff Property*

The Ecosystem Enhancement Program (EEP) provides funding for the purchase of riparian buffer and wetland conservation easements, and in turn the DOT receives mitigation credits to offset negative impacts to such ecosystems during road and highway construction.



*Old growth longleaf on the Cochran Little River Property*

The LandTrust has now assisted with the completion of 17 EEP pro-

<i>Project</i>	<i>County</i>	<i>Stream Frontage (feet)</i>	<i>Easement Acreage</i>	<i>Streams Protected</i>
Walker Property	Cabarrus	1,891.49	33.671	Dutch Buffalo Creek
Wickliff Property	Cabarrus	359.84	2.734	Dutch Buffalo Creek
Parker Property	Randolph	5,025.73	34	Little River
Whatley Property	Randolph	4,501.89	18.259	Uwharrie River/Little Uwharrie River
Bingham Lands	Montgomery	47,881	562.126	Uwharrie River and tributaries
Wysner Mountain	Montgomery	3,292.5	55.874	Barnes Creek
Cochran Little River	Montgomery	2,507.23	18.641	Little River
Cochran Uwharrie River	Montgomery	2,989.94	15.351	Uwharrie River
<b><i>Totals</i></b>		<b><i>68,449.62</i></b>	<b><i>740.656</i></b>	



## Your Gifts Support Our Conservation Work

Your donations will allow us to continue "Saving the Places You Love" in the Piedmont Region. The following are **new(\*)** or renewing members from April 1, 2007 through September 1, 2007. Every effort has been made to ensure that these names are correct. Should there be an error, or if you have questions of comments, please contact us at 704.647.0302.

### **Golden Oak (\$5,000 and above)**

Ms. Amy Grissom  
Mr. and Mrs. Fred Stanback  
Mr. and Mrs. William C. Stanback  
The Margaret C. Woodson Foundation

### **Maple (\$2,500 - \$4,999)**

**Ms. Teresa Bridges\***  
The Mary Shaw Love May Family

### **Dogwood (\$1,000 - \$2,499)**

**Carolina Master Cycling\***  
Mr. and Mrs. Ronald Chaney  
Mr. and Mrs. Larry Cloninger  
J. H. Cook & Sons  
F&M Bank  
Goodman Millwork, Inc.  
Mr. Peter Wilson Hairston  
Dr. and Mrs. Walter B. Holland  
Mr. and Mrs. Gordon Pannill Hurley  
Mr. and Mrs. James R. Mauney  
Piedmont Natural Gas Foundation  
Power Curbers, Inc.  
Mr. Bruce Ruffy  
Mr. Bradford G. Stanback and Ms. Shelli Lodge-Stanback  
Mr. and Mrs. Mike Walter  
Mr. and Mrs. Dan R. Williams  
**Ms. Lydia Williams\***  
Woodson Sayers and Attorneys

### **Benefactor (\$500 - \$999)**

Anonymous  
**A Step in Time\***  
Mr. and Mrs. John Bates  
Ms. Frances Cannon  
Mr. and Mrs. J. Keith Crisco  
Mr. and Mrs. Robert Ebert  
Global Contact Services  
Mid-South Tractor Company  
National Starch and Chemical  
Mr. and Mrs. John McCrary Parrott  
Ms. Janice Query  
**Randolph Rifle Club\***  
SunTrust Bank  
Mr. and Mrs. C. H. Timberlake  
Wachovia Bank

### **Patron (\$250 - \$499)**

Mr. and Mrs. Kent G. Callahan  
Mr. and Mrs. Samuel F. Davis, Jr.  
Mr. and Mrs. N. J. Errante

Mr. and Mrs. Larry H. Fain  
Mr. and Mrs. S. Lonnie Goodman  
Mr. and Mrs. William Dudley Kenerly  
Mr. and Mrs. Don W. Leonard  
Mrs. John Harris Morrison  
Mr. and Mrs. John Harris Morrison, Jr.  
Dr. and Mrs. Gary H. Parks  
Mr. and Mrs. Branson A. Pethel  
Mr. and Mrs. Richard Rankin Reamer  
Mr. and Mrs. Kevin Redding  
Mr. and Mrs. Scott Robinson  
Mr. and Mrs. David F. Simmons  
Statewide Title, Inc.  
Dr. and Mrs. Charles Steinman  
Mrs. Edward Tennent Taylor  
Mr. and Mrs. Kenneth Vaughn  
Mr. and Mrs. Scott Whittington  
Mr. and Mrs. Alfred Wilson

### **Sustaining (\$100 - \$249)**

Dr. Richard W. Adams  
Mr. and Mrs. Henry Alexander  
Mr. and Mrs. Joseph F. Antosek III  
Dr. and Mrs. Jeffrey Baker  
Mr. Ralph Baker  
Mr. and Mrs. Matthew Barr  
Mr. and Mrs. Bryce Parker Beard III  
Mr. and Mrs. Clarence Beaver, Jr.  
Dr. and Mrs. Robert Bertram  
Mr. and Mrs. Edward Birkinshaw  
Dr. and Mrs. Wilbert W. Blackman  
Mr. and Mrs. Steve Blount  
Mr. and Mrs. Tom Bost  
Mr. and Mrs. Benjamin H. Bridges III  
Hon. Charles Brown and Ms. Emily Ford  
Mr. and Mrs. Edward Addison Brown  
Ms. Claudia Bulthuis  
Mr. and Mrs. Nathan Chambers  
Mr. Donald Clement, Jr.  
Mr. Willie L. Clement III and  
Ms. Katharine Murdoch  
Rep. Lorene Coates  
Mr. Charles Coble  
Dr. and Mrs. Steven Colwell  
Mr. and Mrs. English D. Cook  
Mr. and Mrs. Ronald E. Crawley  
Mr. and Mrs. Greg Culp  
Mr. and Mrs. Addison Davis  
Mr. and Mrs. Glenn Dixon  
Mr. and Mrs. J. Michael Dunham  
Mr. and Mrs. Lawrence Allen Edwards  
Mr. and Mrs. Charles W. Elliott  
Mr. and Mrs. Richard Everson

Mr. and Mrs. Luke Fisher  
Mr. and Mrs. W.O.T. Fleming  
Hon. and Mrs. Larry Grant Ford  
Mr. and Mrs. James F. Fowler  
Mr. and Mrs. Tyler Frick  
Mr. and Mrs. Tomme T. Gamewell  
Miss Lillian Gascoigne  
Dr. and Mrs. Myron Arthur Goodman  
Mr. and Mrs. Richard Park Goodman  
Mr. and Mrs. Sanders Emerson Goodman  
Mr. and Mrs. Cress Goodnight III  
Mr. and Mrs. Cress Goodnight, Jr.  
Mr. and Mrs. James Beall Graham  
Mr. and Mrs. Wilson Graham  
Dr. and Mrs. Gordon A. Grant III  
Mr. and Mrs. T. Burt Harris  
Mr. and Mrs. Mark Hayden  
Mr. and Mrs. John Maxey Henderlite, Jr.  
Mr. H. L. Hill  
Mr. and Mrs. John E. Hlavacek  
Rev. and Mrs. Wayne Hoagland  
Mr. William E. Hollan, Jr.  
Mr. and Mrs. Michael M. Hollingsworth  
Mr. and Mrs. Joel Hubbard  
Mr. and Mrs. J. Edwin Hunger  
**Ms. Rebecca E. Hyde\***  
Mr. and Mrs. Nash Isenhower  
Dr. and Mrs. James C. Johnson  
Dr. and Mrs. Richard D. Jordan  
Mr. and Mrs. William K. Kopley  
Mr. and Mrs. Jim Knowles  
Mr. Robert H. Knox III  
Mr. and Mrs. Earle Koontz  
Mr. and Mrs. Ervin E. Lampert, Jr.  
Mr. Ryan Lawson  
Mr. and Mrs. Herbert L. Lawton  
Ms. Sarah B. Ledbetter  
Lexington State Bank  
Mr. and Mrs. John F. Lipe  
Mr. and Mrs. Erik Lipscomb  
Mr. and Mrs. Robert F. Lower  
Dr. Deborah Lucas and Mr. Richard Lewis  
Mr. and Mrs. Richard J. McGuire  
Dr. and Mrs. Edward McKenzie  
Mr. and Mrs. Dan Mikkelson  
Dr. and Mrs. James T. Mitchell  
Mr. and Mrs. Peter J. Mooney  
Mr. T. Jefferson Morris  
Mr. and Mrs. J. Foster Owen  
Ms. Alisa Palmer  
Mr. Brad Penley  
**Mr. Brian Pfaff\***  
Mr. Gene Pickler

## Donations Continued...

### **Mr. Jim Plant\***

Mr. and Mrs. David L. Pressley, Jr.  
Ms. Janice Query  
Mr. and Mrs. Kevin Redding  
Mr. and Mrs. Ricky Joe Reich  
Mr. and Mrs. Chancellor Murray Reynolds  
Mr. Kent Roberts  
Mr. and Mrs. Scott Robinson  
Mrs. Hans Roemer  
Mr. and Mrs. Bobby L. Rusher  
Mr. and Mrs. Michael Shadroui  
Reverend and Mrs. D. Banks Shepherd  
Mr. Jack M. Sherrill  
Mr. and Mrs. Gregory Scott Shields  
Mr. and Mrs. David F. Simmons  
Dr. and Mrs. David Skowronek  
Mr. George E. Smith  
Mr. and Mrs. Ray Smith  
Mr. and Mrs. Tom E. Smith  
Mr. and Mrs. Eddy L. Snow  
Mr. and Mrs. Clifford D. Sorel  
Mr. and Mrs. Maxwell K. Spear, Jr.  
Dr. and Mrs. John Robert Spencer  
Dr. and Mrs. Robert Gibson Steele  
Mr. and Mrs. Ned A. Storey  
Mr. and Mrs. David W. Swaim  
Dr. and Mrs. Willard Ray Thompson, Jr.

### **Dr. and Mrs. Erron Towns\***

**Mr. and Mrs. Ray-Kent Troutman\***  
Mr. Chris H. Verner  
Mr. and Mrs. Edward William Wagoner  
Mr. and Mrs. W. Price Wagoner II  
Mr. and Mrs. Jason Albert Walser  
Mrs. Louise R. Walser  
Ms. Sue Carter Walser  
Dr. John Edmund Wear, Jr.  
Dr. and Mrs. John C. Webb  
Dr. and Mrs. William Whitaker Webb, Jr.  
Dr. and Mrs. William Whitaker Webb III  
Dr. and Mrs. Jon E. Welch  
Mr. and Mrs. Jason Wenker  
Mr. and Mrs. J. Jay Whittington  
Mr. and Mrs. Scott Whittington  
Mr. and Mrs. James G. Whitton  
Dr. and Mrs. Edwin Wilson  
Mr. and Mrs. David Wood  
Mr. and Mrs. Robert H. Wright  
Mr. Braxton Young  
Mr. and Mrs. H. Darrell Young

### **Family (\$50 - \$99)**

Mr. and Mrs. Glen Albracht  
Mr. and Mrs. Henry Alexander  
Dr. and Mrs. Brandon Aron  
Mr. and Mrs. Jerry Barger  
Mr. and Mrs. Harold Belk  
Mr. and Mrs. Steve Blount  
Mr. and Mrs. G. Boon Chesson

Mr. and Mrs. Melvin Glenn Cline

### **Ms. Marla Coulthard\***

Mr. and Mrs. John W. Dees II  
**Mr. and Mrs. Nathan Dickert\***  
**Mr. and Mrs. Lindsey Dunavent\***  
Mr. and Mrs. Alfred G. Dunn, Jr.  
Mr. and Mrs. Harold C. Earnhardt  
ERA Glover Realty  
**Ms. Lynn MacDougall-Fleming\***  
Mr. and Mrs. Walter Gordon  
Mr. and Mrs. Rhett E. Greene  
Mr. and Mrs. Edwin Hall  
Mr. and Mrs. John Highfill  
Mr. and Mrs. Perry D. Hood  
Innes Street Drug Company

### **Mr. and Mrs. John Isenhour\***

Mr. and Mrs. William C. Isenhour  
Mr. and Mrs. William Robyn James  
Las Palmas Restaurant  
Mr. and Mrs. John G. Lewis, Jr.  
Mr. Randolph Lewis and Ms. Abigail Jennings  
Literary Bookpost  
Reverend and Mrs. I. Mayo Little  
Dr. and Mrs. Richard W. Martin  
Mr. Blair Matthews  
Mr. and Mrs. William J. McCoy  
Mr. and Mrs. Tim McCre  
Mr. and Mrs. Jerry McKenzie  
Mrs. Rebecca Reitz McKinley  
Mr. and Mrs. Fred Bruton Monroe  
Mr. and Mrs. J. Foster Owen  
Mr. and Mrs. Charles A. Peacock  
Mr. and Mrs. Dewey Peck  
Mr. and Mrs. John T. Peeler  
Mrs. Elizabeth V. Rankin  
Mr. and Mrs. Sam A. Rankin  
Mr. and Mrs. Ray D. Raymer, Jr.  
Miss Patricia P. Rendleman  
Mr. and Mrs. Charles Roe  
Mr. John Bruce Safrit  
Mr. and Mrs. Larry Shaw  
Mr. and Mrs. D. Wayne Shepherd  
Mr. and Mrs. Thomas G. Shugrue

### **Mr. and Mrs. John Sigmon\***

Mr. and Mrs. Lee Snow  
Mr. and Mrs. James Anderson Sparks  
Mr. and Mrs. Maxwell K. Spear, Jr.  
Mr. and Mrs. Robert W. Stamey  
Mr. and Mrs. Ned A. Storey  
Dr. and Mrs. Heath C. Thornton

### **Dr. and Mrs. Charles Upchurch\***

### **Ms. Virginia Wall\***

Dr. and Mrs. W. Max Walser  
Dr. and Mrs. Robert Wilson  
Mr. and Mrs. Ronald G. Wray  
Ms. Jean Wurster

### **Individual (\$35 - \$49)**

Mr. and Mrs. Mark S. Alley  
Mr. and Mrs. Kent Beck  
Mr. and Mrs. Len Clark  
Mr. Wayne M. Cline  
Ms. Mary C. Cridlebaugh  
Ms. Vanda Lippert Crowell  
Mr. Gabriel Cumming  
Ms. Jamima P. DeMarcus  
Drs. Douglas and Laurel Eason  
Mr. and Mrs. Ezra C. Gilliam  
Mr. and Mrs. Frank W. Goodnight  
**Mr. Robert E. Goodwin\***  
Mr. and Mrs. John W. Helms  
**Ms. Bunny V. Howell\***  
Mr. and Mrs. Darren Menius  
Mr. Glenn H. Peninger, Jr.  
Mr. Brian James Pfaff  
Mr. and Mrs. Clifton Pickett  
**Ms. Vicky Poindexter\***  
**Mr. Reid Pollard\***  
Mr. and Mrs. Ray D. Raymer  
Ms. Nancy Ruppert  
Ms. Myra J. Scarboro  
Mr. and Mrs. Charles P. Sherrill  
Ms. Juanita W. Teschner  
Mr. and Mrs. Dennis Testerman

### **Honorariums**

*In honor of Jason Albert Walser*  
by Adam Walser

*In honor of the Marriage of  
Lynda and Jack Errante*  
by Elizabeth V. Rankin

### **Memorials**

*In memory of Harold Parham*  
by Phyllis T. Parham

*In memory of Peter Wilson Hairston*  
by Mr. and Mrs. Andrew J.  
Abramson

*In memory of Albert Walser*  
by Adam Walser

*In memory of Lucins Perry Bell III*  
by Annette Bell Roberts

### **Grant Funds Received**

Conservation Trust of North Carolina  
NC-DENR  
State of North Carolina  
The Margaret C. Woodson Foundation

## Board Member Profiles

### *Renessa Brown*

As the Natural Resources Conservation Service's (NRCS) district conservationist for Stanly and Montgomery counties the last seven years, new board member Renessa Brown brings a wealth of knowledge in conservation practices and landowner contacts with her. Prior to her 12-year career with NRCS, Renessa earned a BS degree in biology from N.C. Central University and a master's degree in plant and soil science from N.C. A&T University. "I have always had an interest in the environment and science," says Renessa. "The one thing that I enjoy the most about working with NRCS is the opportunity to work with people and experience the diverse types of agriculture. I am responsible for providing technical assistance to farmers and landowners to protect our natural resources. I think that the Land Trust is very unique in what it does. I have landowners and farmers that contact me every day about how they can protect and keep their land for tomorrow. I look forward to serving on the board and hope to be a valuable asset in helping the Land Trust continue their mission and goals."



### *Bill Medlin*

With a background in entrepreneurial business and nonprofit management, Bill Medlin is a perfect addition to the LandTrust Board. Bill is a native of High Point who graduated with a BA in Accountancy from Wake Forest University.

Currently, he is a founder and CEO of Legacy Paddlesports, a new kayak manufacturer located near Jamestown, North Carolina. Prior to this venture, he was with the Yadkin-Pee Dee Lakes Project for three years as their executive director and helped launch their small town revitalization program and start an arts incubator and sustainable enterprise incubator in Star, among other projects. Bill also received a master's degree in theology from Carolina Evangelical Divinity School last year. He and his wife, Sue, have two children - Joshua and Jessica.

## *Conservation Partners*

The LandTrust is constantly presented with opportunities to save the places you love, so to increase our efficiency in this effort, we work with a number of partners. These include our Soil and Water Conservation Districts, the NC Zoo, the NC Wildlife Resource Commission, the United States Forest Service, the Nature Conservancy, along with many other organizations through a unique partnership focused on the Uwharrie region, the Greater Uwharrie Conservation Partnership. This partnership provides a forum where we can openly communicate and assist each other in our conservation endeavors, including land protection, management and stewardship, enabling us to be more efficient in our preservation efforts. Without our partners, we would not be where we are today, having protected close to 15,000 acres since 1995.



## *Thanks to our Interns!*

A big THANK YOU to our summer interns, Katie Bender and T.J. Mascia! Katie is a senior environmental science major at Catawba College, and she provided us many hours of her valuable time, helping monitor properties, create a great new informational display, and organize and carry out many of our activities.

T.J. Mascia was a Stanback Intern we shared with Piedmont Land Conservancy (PLC). He is pursuing his joint Master of Environmental Management and Law Degree at Duke University. He is working on a management plan for our Lawrenceville Property. We wanted to say thanks and best wishes to both of you in all your future endeavors!





## THE LANDTRUST FOR CENTRAL NORTH CAROLINA

The LandTrust is a private, nonprofit organization working with private and public landowners to protect the special natural areas, family farms and rural landscapes of Anson, Cabarrus, Davidson, Davie, Iredell, Montgomery, Randolph, Richmond, Rowan and Stanly Counties. With 501 (c) (3) status, all donations to The LandTrust qualify for maximum tax deductions.

### BOARD OF DIRECTORS

Dan R. Williams, President  
Dyke Messinger, Vice President  
H. Franklin Sherron, Jr., Secretary  
Dave Simmons, Treasurer  
Moni C. Bates  
Renessa Brown  
Darryl Corriher  
Lindsey Dunevant  
Amy Grissom  
John Hart  
Bill Medlin  
Jeff Michael  
Peg Knox Morrison  
John Peeler

### BOARD OF ADVISORS

Joe Adams  
Raymond D. Coltrain  
J. Myrick Howard  
Margaret H. Kluttz  
John Lentz  
Joseph McDonald  
David Springer  
Alice Stanback  
Fred Stanback  
William C. Stanback  
Charles E. Roe  
Roberts E. Timberlake

### STAFF

Jason A. Walser, *Executive Director*  
Andrew Waters, *Operations Director*  
Barbara Martin Lawther, *Director of Development*  
Michele d'Hemecourt, *Land Protection Specialist*  
Crystal Cockman, *Uwharrie Conservation Specialist*



P.O. Box 4284  
Salisbury, NC 28145  
704-647-0302

*Saving The Places You Love*

Non-Profit Org.  
U.S. Postage  
**PAID**  
Salisbury, NC  
Permit No. 111